

# RADIO CONTROLLED ALARM CLOCK

*MODEL : BHM-612*

*USER'S MANUAL*

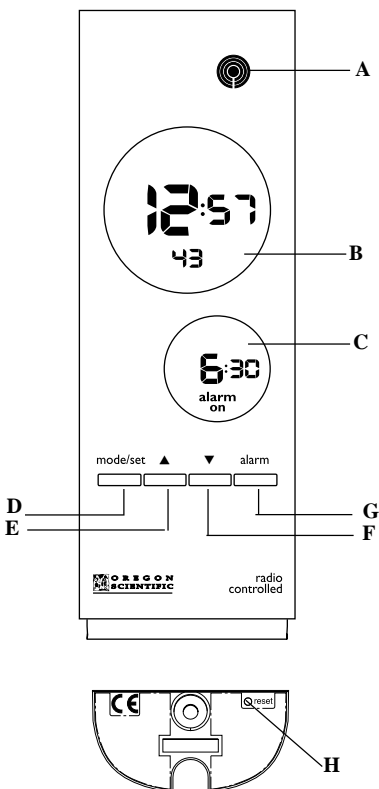
## INTRODUCTION

Congratulations on your purchasing the BHM-612 Radio Controlled Alarm Clock.

A SMART-LOOKING AND EASY-TO-OPERATE TIMEPIECE, THE BHM-612 IS DESIGNED TO AUTOMATICALLY SYNCHRONIZE ITS CURRENT TIME AND DATE WHEN BROUGHT WITHIN AN APPROXIMATE 1500KM RADIUS OF THE RADIO SIGNAL GENERATED FROM DCF77 FRANKFURT, GERMANY (CONTINENTAL CENTRAL EUROPE VERSION) OR MSF RUGBY, ENGLAND (UK VERSION).

The BHM-612 is also equipped with a daily alarm clock plus date and multilingual weekday display.

## FEATURES & KEY CONFIGURATION



**A RF SIGNAL INDICATOR**

- Indicates the signal-receiving status of the unit

**B MAIN WINDOW**

- Displays the current time with seconds or day-of-the week

**C SECONDARY WINDOW**

- Displays the alarm time and its status or date

**D [ MODE/SET ] button**

- Changes between seconds and weekday display (Main window) or between calendar and alarm clock display (secondary window)

- Holds to activate the clock setting routine

**E [ UP ] button**

- Increases the value of a setting by one unit

**F [ DOWN ] button**

- Decreases the value of a setting by one unit

**G [ALARM] button**

- Changes the display and operating status of the alarm clock

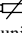
**H [RESET] button**

- Returns all settings to their default values

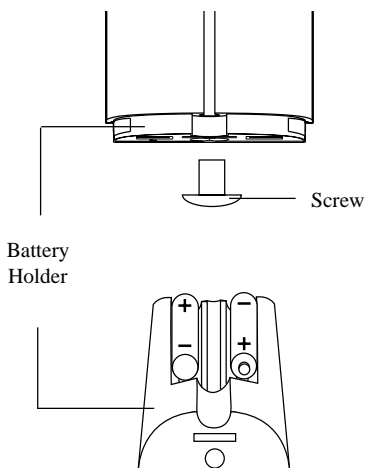
---

## BATTERY INSTALLATION

---

1. Open the battery compartment by removing the screw at the bottom of the unit.
2. Pull out the battery holder and insert two AAA-sized (UM-4) batteries in accordance with the polarities shown.
3. Slide back the battery holder into the compartment and fasten the screw.
4. Press **RESET** with a blunt stylus.
5. When the low battery indicator [] appears on the display, follow the above procedures to replace the unit with new batteries.

*Note* The unit will automatically search for the radio signal when batteries are first installed. If the unit is within the transmission range, the RF mechanism of the unit will dominate. Otherwise, you can switch to manual setting of the alarm clock.



## DISPLAY MODES

In normal display, the current time, including seconds, will be displayed in the main window and the date will be displayed in the secondary window.




To display the weekday in the main window, press [ **MODE / SET** ] once. Press the button again to display seconds.

To display the alarm time in the secondary window, press [ **ALARM** ] once. Press [ **MODE / SET** ] to display the date.

## ABOUT RECEPTION OF RADIO SIGNAL

The BHM-612 is designed to automatically synchronize its current time and date when brought within range of the DCF-77 signal (Continental Central Europe Version).(MSF for UK version)

When the unit is within range, its radio-control mechanism will override all manual settings. Time will start to run from 00:00:00 and date, 1-1 (January1). The benefit of a RF controlled clock is sustained accuracy without the need of manual adjustment.

The unit is in searching mode.	
Transmission data is securely registered.	
No signals.	

A complete reception generally takes about two to 10 minutes, depending on the strength of the radio signal. When the reception is completed, the signal display will be stable. After that, the periodical scanning will only take a few seconds.

For better reception of radio signals, place the clock away from metal objects and electrical appliances to minimize interference.

## HOW TO ENABLE OR DISABLE AUTO-RECEPTION

If you wish to disable the auto-reception feature while the unit is within range, hold down the UP and DOWN buttons simultaneously for three seconds. The RF signal display will disappear. The unit will NOT respond to radio signals.

To enable the feature again, hold down the buttons again for three seconds. The RF signal display will start scanning to initiate reception automatically.

---

## HOW TO SET THE CALENDAR CLOCK MANUALLY

---

### When the current time is displayed:

- Press [ **MODE / SET** ] for two seconds.
- Enter the month using [ **UP / DOWN** ].
- Press [ **MODE / SET** ].
- Enter the day of the month using [ **UP / DOWN** ].
- Press [ **MODE / SET** ].
- Enter the display language for the weekday using [ **UP/DOWN** ]. You can choose among **E (English)**, **D (German)**, **F (French)**, **I (Italian)** and **S (Spanish)**.
- Press [ **MODE / SET** ].
- Follow the same pattern to enter weekday, hours and minutes.
- Press [ **MODE / SET** ] to save the changes and exit.

If changes are made during the process, the seconds of the clock will reset and start from zero. The unit will also save all changes and return to normal display automatically after the unit has been left idle for a minute.

---

## HOW TO SET AND USE THE ALARM

---

### To set the alarm time:

1. Press [ **ALARM** ] to display the alarm time.
2. Press and hold [ **ALARM** ] for two seconds.
3. Enter the hours using [ **UP / DOWN** ].
4. Press [ **ALARM** ].
5. Enter the minutes using [ **UP / DOWN** ].
6. Press [ **ALARM** ] to save and exit. The alarm clock will be activated automatically during the setting procedure.

### To activate or deactivate the alarm during normal display.

- Press [ **ALARM** ] to display the alarm time.
- Press [ **ALARM** ] to change the status of the alarm. The respective indicator will appear.

When the alarm goes off the alarm sound which will gradually increase in volume and repeating speed will be turned on for about 1 minute unless any key is pressed to mute the alarm. If no key is pressed within this 1 minute, the alarm will be repeated once after approx 8 minutes.

---

## THE RESET BUTTON

---

The [ **RESET** ] button is used to enhance synchronization of signals in case of operation in an unfavorable way, malfunction or battery replacement. Use a blunt stylus to hold down the button. All settings will return to their default values.

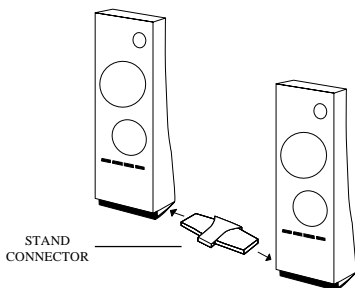
---

## TABLE-STANDING OR WALL-MOUNTING

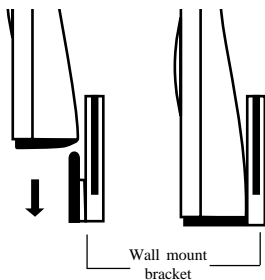
---

### Table-Standing:

Your unit comes with a stand connector for connecting it to other modular units in the same series.

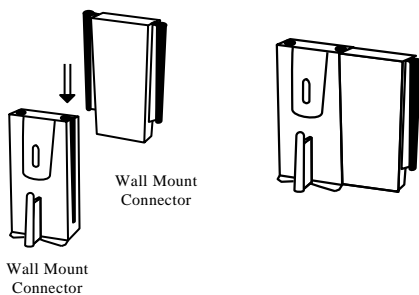


### Wall-Mounting:

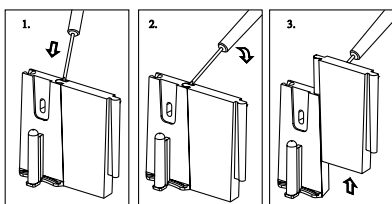


### Connector:

Use wall-mount connector to align with other wall-mount bracket if necessary.



### Un-install the brackets:



---

## MAINTENANCE

---

When handled properly, this unit is engineered to give you years of satisfactory service. Here are a few product care instructions:

1. Do not immerse the unit in water. If the unit comes in contact with water, dry it immediately with a soft lint-free cloth.
2. Do not clean the unit with abrasive or corrosive materials. Abrasive cleaning agents may scratch the plastic parts and corrode the electronic circuit.
3. Do not subject the unit to excessive: force, shock, dust, temperature, or humidity. Such treatment may result in malfunction, a shorter electronic life span, damaged batteries, or distorted parts.
4. Do not tamper with the unit's internal components. Doing so will terminate the unit's warranty and may cause damage. The unit contains no user-serviceable parts.
5. Only use new batteries as specified in this instruction manual. Do not mix new and old batteries as the old batteries may leak.
6. Read this instruction manual thoroughly before operating the unit.

---

## SPECIFICATIONS

---

Operating Temperature	:	0° C to 40° C
Radio Control	:	Auto synchronizes current time and date by Radio signal generated from Germany DCF77(the UK version from MSF Rugby, England)
Calender	:	Weekday in English / German / French/ Italian / Spanish; Current date / month format
Clock Time	:	24-hour format
Alarm Time Duration	:	1 min
SNOOZE Time Duration	:	8-9mins
Accuracy	:	+/-0.5 second/day(when RF is disabled)
Battery Type	:	Two (2) UM-4 or "AAA" size
Unit Dimension	:	166 x 58 x 32mm
Unit Weight	:	158.12g

---

## NOTE ON COMPLIANCE

---

**Warning:** Changes or modifications to this unit not expressly approved by the party responsible for compliance could void the user's authority to operate the equipment.

**R&TTE Compliance Note**

This device complies with the essential requirements of Article 3 of the R&TTE 1999/5/EC Directive, if used for its intended use and that the following standard(s) has been applied:

Electromagnetic compatibility (Article 3.1.b of the R&TTE Directive)

Applied standards ETS 300 683 : 1997

Efficient use of the radio frequency spectrum (Article 3.2 of the R&TTE Directive)

Applied standards EN300 220 –1 : 1997

**INTENDED USE OF THE DEVICE****CAUTION**

- The content of this manual is subject to change without further notice.
- Due to printing limitation, the displays shown in this manual may differ from the actual display.
- The contents of this manual may not be reproduced without the permission of the manufacturer.