



Model: MP810

User Manual





**DIGITAL MP3 PLAYER (MP810)
USER MANUAL**

CONTENTS

Introduction 1
 Package Contents 1
Product Overview 2
 Front View 2
 LCD Display Symbols 2
Getting Started 3
 Inserting Battery 3
MP3 Player Link Software 4
 System Requirements 4
 Installing Firmware Upgrade Software and Windows 98SE Drivers 4
Connecting to a Computer 5
Transferring Files 6
Disconnecting the Player from PC 6
 Windows 98SE 7
 Windows ME / 2000 / XP 7
Using the Audio Player 7
 On / Off 7
 Music / Voice / Free Memory 7
 Adjusting Volume (Level 00 ~ 39) 8
 Recording 8
 Playback / Pause / Stop / Turn Off 8
 Previous / Next Track or Voice Recording 8
 Repeat 9
 Equalizer 10
 Delete 10
 Button Lock 10
Reinstalling Firmware 11
Formatting the Audio Player 12





EN

Troubleshooting 12

Copyright 14

Special Notice 14

Safety and Care 14

 Safety 14

 General Warnings 14

 About Noise 15

 Cleaning Your Audio Player 16

 Storage 16

Caution 16

Technical Specifications 16

About Oregon Scientific 17

FCC Statement 17





INTRODUCTION

23

Thank you for selecting the Oregon Scientific™ Digital MP3 Player MP810. The compact, mobile MP810 offers the convenience of listening to MP3 or WMA music no matter where you are during your travels. The low-power consuming device features MP3 playback or digital voice recording. In addition, the MP810 also acts as a mobile disk drive for convenient storage of documents and other important files you may need to take with you while on the road.

Other key features include:

- No software drivers needed for Windows ME / 2000 / XP
- MP3 and WMA playback
- Blue backlight for easy viewing of LCD display
- Firmware upgradeable / reinstallation
- Mobile storage function
- USB thumb drive design for direct connection to PC
- Built-in 128MB, 256MB or 512MB flash memory (refer to indication on the packing)
- Digital voice recording: approximately 8 hours (128MB) / 16 hours (256MB) / 32 hours (512MB)
- 6-mode equalizer



Keep this manual handy as you use your new product. It contains practical step-by-step instructions, as well as technical specifications and warnings you should know.

PACKAGE CONTENTS

When you unpack your audio player, make sure to keep all the packing materials in a safe place.

In the box, you will find:

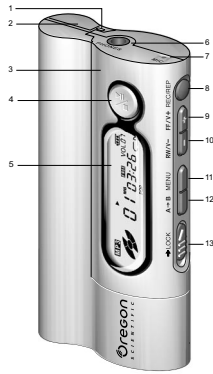
- Digital audio player main unit
- USB cable
- Stereo Earphone
- Software installation CD-ROM
- 1 x AAA alkaline battery

1





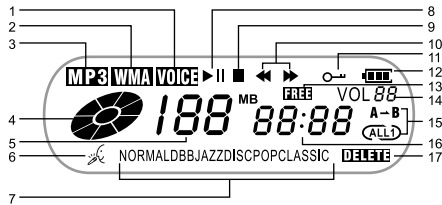
EN **PRODUCT OVERVIEW**
FRONT VIEW



1. Strap hole
2. Battery door
3. Storage body
4. **PLAY / PAUSE / STOP** and **OFF / ON** : Press to turn off/on audio player and play, pause or stop music playback
5. LCD display
6. Earphone jack
7. Built-in microphone
8. **REC / REP**: Press to record a voice message or repeat message or track
9. **FF / V+**: Press to increase volume, fast forward to next track, or choose next selection
10. **REW / V-**: Press to decrease volume, rewind to previous track, or choose previous selection
11. **MENU**: Press to select from a variety of menu items
12. **A->B**: Press to repeat a section of a track, or enter Delete mode.
13. **LOCK**: Press to lock and unlock all buttons.



LCD DISPLAY SYMBOLS



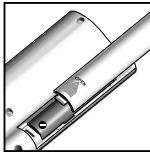
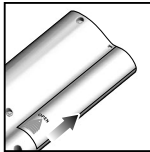


1. Voice mode VOICE	10. REW / FF ◀▶
2. WMA mode WMA	11. Button lock 🔑
3. MP3 mode MP3	12. Battery power 🔋
4. Dynamic display	13. Free space FREE
5. Track number / Storage capacity	14. Volume
6. Recording mode 📻	15. Repeat mode (ALL)
7. Equalizer	16. Elapsed time display
8. Playback / Pause ▶ 	17. Delete DELETE
9. Stop ■	

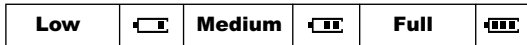



GETTING STARTED

INSERTING BATTERY



1 x AAA alkaline battery is supplied with this product. Insert the battery before first use, matching the polarity as shown in the battery compartment.



When the battery indicator shows , this indicates the battery is about to run out of power within a few minutes. Replace with a new battery as soon as possible.



MP3 PLAYER LINK SOFTWARE

SYSTEM REQUIREMENTS

Before you begin, please check to make sure your computer meets the following system requirements:

- Intel® Pentium® 133MHz or faster
- CD-ROM Drive
- USB 1.1 support
- 10MB free hard disk space
- Microsoft® Windows® 98SE, Me, 2000 (with Windows 2000 Service Pack 3 or above installed), or XP

INSTALLING FIRMWARE UPDATE SOFTWARE AND WINDOWS 98SE DRIVERS

1. Make sure your player is disconnected from the computer.
2. Insert the MP810 CD-ROM into your computer. If the installer does not automatically begin, please refer to the troubleshooting section for help.
3. Follow the onscreen instructions.



4. Restart your computer.
5. The firmware upgrade software installation is completed. If you are using Windows 98SE, the Windows driver is already installed on your computer.

WINDOWS 98SE

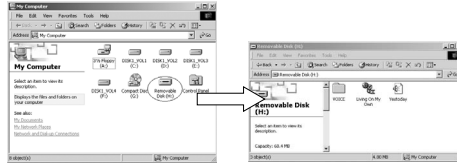
Installing the MP810 Windows driver will allow your computer to recognize your player each time it is connected to the computer.



WINDOWS ME, 2000, XP

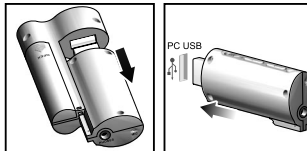
When you connect your recorder to your PC, it will appear as a removable drive (i.e., Removable Disk (H:)).


25



NOTE: If you are using Windows 2000, Windows 2000 Service Pack 3.0 or above must be installed prior to installation of the MP3 player. This update is found at Microsoft's website. If you require assistance installing this service pack, please contact Microsoft directly.

CONNECTING TO A COMPUTER



1. Detach the player's storage body with USB connector and attach to the computer's available USB port directly. OR, connect the other part of the player (with battery compartment) to the PC via the bundled USB cable.
2. Once connected, the player automatically turns on. A window will appear indicating that new hardware has been found and automatically installs the software drivers.
3. **A Removable Disk icon is found in My Computer.** The audio player's LCD display shows  to signal PC-to-audio player connectivity.





EN

NOTE: Windows 98SE-based computers indicate that new hardware has been found and automatically installs the software drivers. If you have not installed the software, please first install the program before connecting the device.


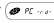
TRANSFERRING FILES

After connecting your recorder to the computer, the computer will detect and identify the device as a removable storage drive, allowing you to drag and drop files between your computer and your player.

1. Select the voice or MP3 / WMA files from your computer.
2. Drag and drop the selected files into the Removable Disk.

NOTE: Your MP3 player is equipped for mass data storage support. This means that it can also be used as a portable hard drive to store and transport all forms of computer data files. You will not be able to view or play any of the stored data unless it is one of the supported audio formats.

- MP3 (Layer 3 MPEG-1, MPEG-2 and MPEG-2.5)
- WMA (Windows Media Audio)
- WAV (IMA ADPCM format)

NOTE: During file transfer, the audio player's LCD display shows a symbol to signal PC-to-audio player connectivity. The LCD display flashes  (writing file to player) or  (writing file to computer) to indicate that data is being transferred.

DISCONNECTING THE PLAYER FROM PC

Unplug your player when it displays . Do not unplug your player during file transfer. Follow the procedures below to disconnect the player from your computer running the following operating systems.


NOTE: Wrongly disconnecting or unplugging the player from the PC during file transfer may damage the software and cause your player to operate improperly. Please see the section on "TROUBLESHOOTING" for more information.



WINDOWS 98SE

1. Double click the **My Computer** icon.
2. Right click the removable drive letter your player has been assigned.
3. Click "Eject" from list before disconnecting.


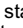
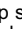
WINDOWS ME / 2000 / XP

1. Click the "Stop USB Mass Storage Device"  icon on the Windows taskbar at the bottom right of the monitor.
2. Click your player drive letter to stop the device before disconnecting.

NOTE: Before unplugging your player from your computer, wait at least 15 seconds after the audio or data file transfer is completed to prevent any data loss that may occur.

USING THE AUDIO PLAYER

ON / OFF

1. Press  once to turn the player on. The player enters MUSIC mode Stop status (The  icon is displayed).
2. In Stop status, press  continuously for 2 seconds to turn the audio player off.

NOTE: In Stop status, the audio player turns off automatically when no button or key is pressed within 1 minute.

NOTE: If you see "Lo batt" displayed on the LCD when the player is turned on, please replace with a new battery.

MUSIC / VOICE / FREE MEMORY

The device can toggle between 3 main modes (MUSIC, VOICE or FREE MEMORY display).





MENU

1. Make sure no tracks or voice recordings are being played back.
2. Simply pressing **MENU** to toggle between MUSIC, VOICE or FREE MEMORY. In MUSIC mode, the MP3 or WMA icon is displayed depending the current music file format.

NOTE: The device's main operations follow the same procedure in either MUSIC or VOICE mode.

ADJUSTING VOLUME (LEVEL 00 ~ 39)

Press **FF / V+** to increase volume and press **RW / V-** to decrease.

RECORDING

1. Under any mode or option other than power off, press and hold **REC** until the LCD displays the recording symbol.
2. The recording symbol on the LCD display blinks after releasing **REC**, and the player starts recording. No any other keys are valid except pressing **REC** to stop recording.

NOTE: The recorded files are saved in WAV format and located in the VOICE folder of your player.

PLAYBACK / PAUSE / STOP / TURN OFF

1. Press **▶** to start playing the current track or voice recording.
2. Press **⏸** to pause playback.
3. Press **▶** again to resume playback.
4. During playback and pause, press **▶** for 2 seconds to stop the current track or voice recording from playing.
5. During playback, pause, or stop, press **▶** for 3 seconds, then release the button and the audio player turns off automatically.

NOTE: This unit supports .WAV files in the IMA ADPCM format only. For details, please refer to the Troubleshooting section of this manual.

PREVIOUS / NEXT TRACK OR VOICE RECORDING

While playing a track or voice recording, press **MENU** twice in rapid succession to access the previous track / rewind or next track / fast forward option. The **◀▶** appears on the display.





PREVIOUS / REWIND

1. Press **RW / V-** once to go to the previous track or voice recording.
2. Press **RW / V-** continuously to rewind to a previous location within a track or voice recording.

23

NEXT / FAST FORWARD

1. Press **FF / V+** once to go to the next track or voice recording.
2. Press **FF / V+** continuously to fast forward to a new location within a track or voice recording.

REPEAT

REPEAT ONE / ALL

1. While playing a track or voice recording, press **REC / REP** to toggle between different repeat options. The LCD displays single repeat and repeat all. When choosing non-repeat, no indicators are shown on the LCD display.

ICON	REP PATTERN	DESCRIPTION
	1 REP	Play and repeat the current single voice recording or track.
	ALL REP	Play and repeat all voice recordings or tracks.

REPEAT A->B

To repeat a section of a track or voice recording while playing back:

1. Press **A->B** to set starting point A. The LCD displays A.
2. Press **A->B** again to set endpoint B. The LCD displays **A-B**.
3. To cancel the section repeat function, press **A->B**. The track or voice recording continues from where endpoint B was marked. You can also press and hold stop playing and cancel the section repeat function.





EN

EQUALIZER

1. While playing a track or voice recording, press the **MENU** key to enter the equalizer option. The LCD display shows the EQ indicator flashing.



2. Press **RW / V-** or **FF / V+** to choose your desired equalizer setting (NORMAL, DBB, JAZZ, DISC, POP, CLASSIC).

DELETE

1. When no tracks or voice recordings are being played (as shown by the Stop ■ icon displayed on the LCD), press and hold **A->B** to enter the delete file option, and press again to switch between deleting "ONE" or "ALL" tracks or voice recordings.



2. Press **↵** to delete either the current track or voice recording or all tracks or voice recordings, depending on your selection.

TIP: If you decide not to delete any tracks, press any button other than **↵** and **A->B**.

BUTTON LOCK

1. In any mode, slide the **LOCK** switch to lock all buttons and keys on the device. The LCD displays the lock symbol.
2. Slide the switch back to its original position to release the button lock.

NOTE: If the lock is on and you try to turn on the audio player, the LCD display shows the lock symbol briefly to indicate that the unit's buttons are locked and automatically turns off.



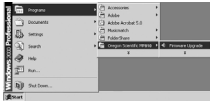


REINSTALLING FIRMWARE

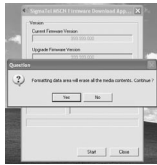
23

If your player is not operating properly, you may reinstall the firmware at any time. Reinstalling your MP810 MP3 player with the latest firmware ensures the device provides optimal playback performance.

1. Connect your player to the computer.
2. From your computer, go to **Start>Programs>Oregon Scientific MP810 Firmware Upgrade**.



3. The current and updated firmware version is displayed in a window. Click the **Start** button to begin the firmware install process.



NOTE: A window pops up with the prompt, "Formatting data area will erase the media contents. Continue?". Check the "Format Data Area". Cancel the process if you need to back up the data stored on player onto your computer first. Then restart the process again.



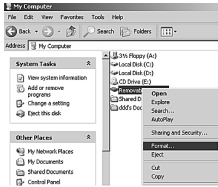
4. Click the **Start** button. All data stored in the MP3 player is erased (if you chose to "Format Data Area") and the firmware upgrade process begins.
5. Click the Close button to close the software once the process is completed.
6. Unplug the MP3 player from the computer.



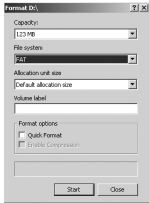


EN

FORMATTING THE AUDIO PLAYER



1. In Windows Explorer, select the drive letter of your player assigned by the computer.
2. Ensure you have selected the right drive (i.e. Removable Disk (H:)). Right-click your mouse button and select the **Format** option.



3. Select **FAT** as the format to use under the **File System** option.
4. Click **Start** to ready the device for formatting. Then click **OK** in the pop up window to start formatting your player.
5. When formatting has finished, click **OK** to exit the program.

NOTE: Formatting the audio player will erase all files previously found on the device. Make sure you have made copies or backed up your audio player files onto your computer.

TROUBLESHOOTING

This section includes a list of frequently asked questions for problems you may encounter with your digital audio recorder. Check here before contacting our customer service department.

Why is the audio player cannot play back some MP3 files?

The device supports MPEG 1, MPEG 2 and MPEG 2.5 MP3 formats. Make sure you have not transferred MP3 files in formats not supported by the audio player. Use software to convert music files to the appropriate MP3 format supported by this audio player. Note that the player may not be able to play back digitally protected content. Please check the Oregon Scientific website for the latest firmware updates.





What .WAV formats does the audio player support?

The device supports .WAV files based on the IMAADPCM format. Do not put .WAV files not supported by the audio player into the root directory of the Removable Disk and the VOICE folder, otherwise it may shut down when playing such .WAV files.

NE

Why does the memory size displayed in the device differ from the actual allotted memory size?

The software in the audio player takes up a small portion of memory, so you will see a small discrepancy between memory size indicated on the device and actual memory size.

What causes the audio player to run so slowly?

Frequently playing or deleting MP3 files over a long period of time will generate fragments in the flash memory, much like fragments generated in a computer's hard disk. This causes the player to run slowly. Format the unit from time to time to ensure that it maintains smooth operation. Refer to the section "FORMATTING THE AUDIO PLAYER" for more information.

My player is unable to start, or the display is garbled.

This could be due to corrupted firmware. Please remove and replace the battery. If this fails to resolve the issue, you may need to flash the firmware. For details on how to do this, refer to the section "REINSTALLING FIRMWARE" for more information.

Why is the audio player not working properly, i.e., always shutting off?

If you encounter any operational failures due to improper use of the device, turn the unit off and wait a few minutes before turning the audio player on again. You may also format the player and reinstall firmware from your computer. The battery on your device may have also run out of power, in which you should replace with a new battery as soon as possible.





EN

COPYRIGHT

Voices or sounds recorded cannot be used in ways that infringe copyright laws. Note that some restrictions apply to the recording of performances, entertainments and exhibits, even when intended purely for personal use.

Users are also asked to note that the transfer of memory containing data or MP3 files protected under copyright laws are only permissible within the restrictions imposed.

SPECIAL NOTICE

Read this manual carefully before operating the unit. We do not assume any liability arising out of improper operation or incidental damages. Operate this unit with care and back up any files when necessary.

SAFETY AND CARE

SAFETY

To ensure that you use your audio player correctly, read these Safety Notes and your User Manual carefully. The warnings given here provide important safety information and should be observed at all times.

GENERAL WARNINGS

- Do not attempt to repair the audio player yourself or make any changes or modifications to this product. Contact the retailer or our customer service department if your product requires servicing.
- The audio player is a precision instrument. Never attempt to take this device apart. There is a serious danger of powerful electric shocks.
- Do not immerse the audio player in liquid. This can cause electrical shock and damage the unit.
- Do not, under any circumstances, touch the exposed electronic circuitry of the audio player, as there is a danger of electric shock should it become exposed.

14





- Take special care when handling a damaged LCD display, as the liquid crystals can be harmful to your health.
- Do not use or store the audio player in locations that may adversely affect the product such as rain, snow, desert, and magnetic fields.
- Keep your player away from excessive dust/sand, moisture, rain, direct sunlight or heat.
- Keep your player in a dry, well-ventilated place to prevent it from molding.
- Do not use this device in aircrafts or hospitals. The use of the audio player can cause malfunctions in the control devices of other equipment.
- Keep your player away from any strong magnetic fields. Exposure to magnetic fields may cause the memory to be erased or even damaged.
- Do not subject the audio player to impact, shock or extreme force.
- Take care not to drop the unit when using it.
- Remove the battery if the player is not to be used for a long time.
- Remove dead battery immediately to avoid damage from corrosion.
- Unauthorized changes may void your right to use the product and invalidate the warranty.
- The technical specifications for this product and the contents of the user guide are subject to change without notice.
- Never use headphones/earphones while driving, cycling, or operating any motorized vehicles.
- Listening to music at high volume for long periods of time may damage your hearing. Keep the volume at a moderate level.
- Do not set headphone/earphone volume to high while using pedestrian crossings or walking.

NE



ABOUT NOISE

During recording or playback, noise may be generated if the device is too close to a power lead, florescent light, or portable phone. If the unit is bumped or rubbed during recording, noise may be recorded.





EN

CLEANING YOUR AUDIO PLAYER

Use a soft, dry cloth to clean the LCD display. Use a damp cloth and mild detergent to wipe the unit. Dry immediately.

STORAGE

Remove the battery and keep it in a well-ventilated place to prevent molding. Check all major functions when the player has not been used over a long period of time. This ensures the device remains fully operational.

CAUTION

In case of electrostatic discharge, the product may not function properly and will require a manual reset. After reset, messages recorded will remain intact; if a message was being recorded it will be lost.

TECHNICAL SPECIFICATIONS

TYPE	DESCRIPTION
Memory	Built-in 128MB, 256MB or 512MB Flash memory (Refer to indication on the packing)
Maximum Recording Time	Approx. 8 hours (128MB) Approx. 16 hours (256MB) Approx. 32 hours (512MB)
Input	Built-in microphone
Output	Double-channel earphone, above 8ohm
Power	DC 1.5V, 1 AAA alkaline battery
Battery Life*	Approx. 8 hours of continuous playback
Size	80mm (L) x 41mm (W) x 17mm (T)
LCD Viewable Area	34mm (L) x 10mm (W)
Weight	32g (without battery) 42g (battery included)

16





TYPE	DESCRIPTION
PC Connection	USB 1.1
PC Compatibility	Windows 98SE / ME / 2000 (Service Pack 3.0 or above installed) / XP



*Data is measured with included battery. Various factors can affect battery life, such as temperature, battery type or battery capacity.

NOTE: Design and specifications are subject to change without notice.

ABOUT OREGON SCIENTIFIC

Visit our website (www.oregonscientific.com) to learn more about Oregon Scientific products such as digital cameras; MP3 players; children's electronic learning products and games; projection clocks; health and fitness gear; weather stations; and digital and conference phones. The website also includes contact information for our customer care department in case you need to reach us, as well as frequently asked questions and customer downloads.

We hope you will find all the information you need on our website, however if you'd like to contact the Oregon Scientific Customer Care department directly, please visit: www2.oregonscientific.com/service/support

OR

Call 949-608-2848 in the US.

For international enquiries, please visit www2.oregonscientific.com/about/international/default.asp

FCC STATEMENT

This device complies with Part 15 of the FCC Rules. Operation is subject to the following two conditions: (1) This device may not cause harmful interference, and (2) This device must accept any interference received, including interference that may cause undesired operation.





EN

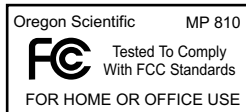
This equipment has been tested and found to comply with the limits for a Class B digital device, pursuant to Part 15 of the FCC Rules. These limits are designed to provide reasonable protection against harmful interference in a residential installation. This equipment generates, uses and can radiate radio frequency energy and, if not installed and used in accordance with the instructions, may cause harmful interference to radio communications.

However, there is no guarantee that interference will not occur in a particular installation. If this equipment does cause harmful interference to radio or television reception, which can be determined by turning the equipment off and on, the user is encouraged to try to correct the interference by one or more of the following measures:

- Reorient or relocate the receiving antenna.
- Increase the separation between the equipment and receiver.
- Connect the equipment into an outlet on a circuit different from that to which the receiver is connected.
- Consult the dealer or an experienced radio / TV technician for help.

CAUTION: Modification -The FCC requires the user to be notified that any changes or modifications made to this device that are not expressly approved by Oregon Scientific, Inc. may void the user 's authority to operate the equipment. Interface cable-Use the shielded cable sold or provided by Oregon Scientific, Inc. for your equipment. Using other interface cable may exceed the limits of Class B Part 15 of the FCC rules.

Legal Company Name: Oregon Scientific, Inc.
Address: 19861 SW 95th Place, Tualatin, Oregon 97062,USA
Phone, Fax: (1)800-853-8883, (1)503-684-8883





© 2004 Oregon Scientific. All rights reserved.

