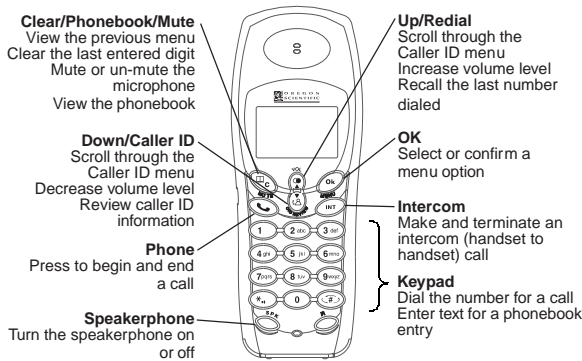


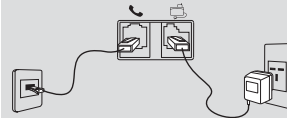
ThermoDECT Quick Reference Guide

Use this quick reference as you set up and first begin to use your ThermoDECT telephone. For more detailed instructions and troubleshooting tips, refer to the User Manual.



To set up the telephone:

1. Connect the base to the AC power source and telephone wall jack, as shown below.



2. (Optional) Attach the belt clip to the handset.
3. Install the handset batteries, matching (+) polarity to (+) and (-) polarity to (-).
4. Allow the handset batteries to charge before using.

Basic tasks					
Action	Procedure	Page	Action	Procedure	Page
Make a call	+ dial number	7	Adjust volume		11
Answer / End a call		8	Mute / Unmute		8
Redial	/ +	7	Speakerphone		7
Cancel / Clear		7	Intercom call	+ handset number	19
Return a missed call	to view New Calls +	8	3-way call	+ handset number + x 2 seconds	20
Call waiting	+	20	Transfer call	+ handset number + OR to cancel	20
Page handset(s)	Press PAGE on the base	8	Deactivate alarm	Press PAGE on the base	22
Set clock	+ Setup + x 3 + date/month + + hour/minute +	22	Set alarm	+ Setup + + Alarms + + to select Alarm 1 or Alarm 2 + + on + + hour/minute + + to select AM or PM +	22

Caller ID / Phonebook tasks		
Action	Procedure	Page
View caller ID information	/	8
Delete caller ID information	/ Caller ID + + Delete +	9
Add caller to phonebook	x 3 + name + + number +	9
Recall phonebook entry	+ / to select entry + +	10
Delete / Edit phonebook entry	x 2 + Delete or Edit + + / entry + x 2	10

ThermoDECT Quick Reference Guide

Setup tasks		
Action	Procedure	Page
Display language	$\text{OK} + \text{F5} \text{ Handset Menu} + \text{OK} + \text{F5} \text{ Language} + \text{OK} + \text{F1} / \text{F2}$ to select the preferred language + OK	13
Change ring tone	$\text{OK} + \text{F5} \text{ Handset Menu} + \text{OK} + \text{F5} \text{ Ext Melody} + \text{OK} + \text{F1} / \text{F2}$ to select the melody + OK	11
Change security PIN	$\text{OK} + \text{F5} \text{ Setup} + \text{OK} + \text{F5} \text{ PIN code} + \text{OK} + \text{PIN code} + \text{OK}$	14
Reset system (with PIN)	$\text{OK} + \text{F5} \text{ Setup} + \text{OK} + \text{F5} \text{ Default} + \text{OK} + \text{PIN code} + \text{OK}$	14
Reset system (without PIN)	Remove batteries + hold OK + insert batteries + OK	15
Temperature display	Insert an unfolded paperclip into the °C/°F hole located on the underside of the base unit, and press.	21
Date display	$\text{OK} + \text{F5} \text{ Setup} + \text{OK} \times 2 + \text{F5} \text{ Date Format} + \text{OK} + \text{F1} / \text{F2}$ to select DD/MM or MM/DD + OK	21
Time display	$\text{OK} + \text{F5} \text{ Setup} + \text{OK} \times 2 + \text{F5} \text{ Hour Format} + \text{OK} + \text{F1} / \text{F2}$ to select 12 or 24 hour display + OK	21

Multiple handset setup tasks		
Action	Procedure	Page
Register handset	Press and hold PAGE on the base + $\text{OK} + \text{F5} \text{ Registration} + \text{OK} + \text{F1} / \text{F2}$ to select an unchecked number + $\text{OK} + \text{PIN} + \text{OK} \times 2$	16
Remove handset	$\text{OK} + \text{F5} \text{ Setup} + \text{OK} + \text{F5} \text{ Remove HS} + \text{OK} + \text{PIN} + \text{OK} + \text{F1} / \text{F2}$ to highlight the handset number + OK	17
Clearing all registrations	Handset: remove batteries + hold OK + insert batteries + release $\text{OK} + 5$ Base: disconnect + hold PAGE + reconnect + release PAGE	18
Name handset	$\text{OK} + \text{F5} \text{ Handset Menu} + \text{OK} + \text{F5} \text{ Handset Name} + \text{OK} + \text{name} + \text{OK}$	18
Set default base	$\text{OK} + \text{F5} \text{ Setup} + \text{OK} + \text{F5} \text{ Base} + \text{OK} + \text{F1} / \text{F2} + \text{OK}$	18
Set ring priority	$\text{OK} + \text{F5} \text{ Setup} + \text{OK} + \text{F5} \text{ Ring Priority} + \text{OK} + \text{F1} / \text{F2}$ to select option + $\text{OK} + \text{F1} / \text{F2}$ to select handset + $\text{OK} + \text{F1} / \text{F2}$ to select rings + OK	19

Child setup tasks		
Action	Procedure	Page
Lock / Unlock keypad	$\text{OK} + \text{F5} \text{ Keypad lock} + \text{OK} + \text{F1} / \text{F2}$ to select on or off + OK	23
Baby call (emergency dial) setup	$\text{OK} + \text{F5} \text{ Babycall} + \text{OK} + \text{F5} \text{ Number} + \text{enter number} + \text{OK}$	23
Baby call on / off	$\text{OK} + \text{F5} \text{ Babycall} + \text{OK} + \text{F1} / \text{F2}$ to select on or off + OK	23
Baby monitor on / off	On the handset that you want to act as a listening device: $\text{OK} + \text{F5} \text{ Monitor Mode} + \text{OK} + \text{F1} / \text{F2}$ to select on or off	24
Baby monitor	On the handset that you want to act as the receiving device: INT + enter handset number for monitor	24
Snake game	$\text{OK} + \text{F5} \text{ Games} + \text{OK} + \text{F5} \text{ Snake} + \text{OK} + \text{F1} / \text{F2}$ to select the level + OK	24
Car game	$\text{OK} + \text{F5} \text{ Games} + \text{OK} + \text{F5} \text{ Car} + \text{OK} + \text{F1} / \text{F2}$ to select the level + OK	24