

WAKE UP THE NATURAL WAY

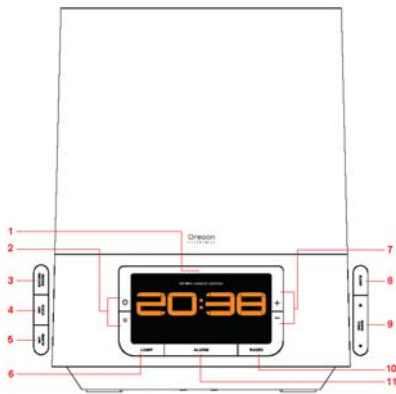
Our body clock is often not in sync with the demands and rhythm of modern life. Our biological clock is affected by external cues, such as sunlight. Light at dawn stimulates production of cortisol, which gets the body ready to work and wake up. By simulating dawn, Oregon Scientific's Sunrise Wake-up Clock (WS902) prepares the body to wake up by gradually increasing brightness to the set level in the 20 minutes prior to desired (set) alarm time.

Start your day better and feel energised to tackle the day. Wake up as nature intended!

IMPORTANT This device does not reduce the hours of sleep needed.

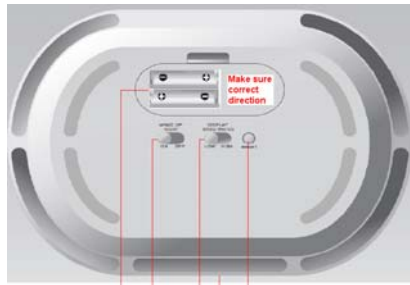
OVERVIEW

FRONT VIEW



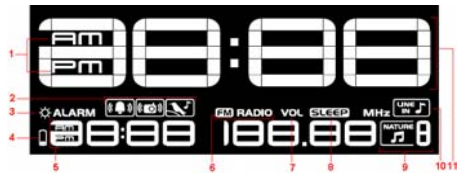
1. SNOOZE / Motion sensor
2. / : Adjust brightness (only when LAMP function has been activated)
3. NATURE SOUND: Toggle through selection (Forest Birds / Brook / Ocean / Rain)
4. SET CLOCK: Enter clock settings
5. SET ALARM: View alarm status; enter alarm settings
6. LAMP: Turn on/off light
7. +/-: Adjust volume (only when radio / soothing sound is playing); change values of the setting
8. SLEEP: View remaining time; enable radio / soothing sound / light sleep; set sleep timer
9. : Enable auto-search for radio station; adjust radio frequency marginally (by 0.05MHz)
10. RADIO: Turn on / off radio
11. ALARM: Enable / disable alarm function

BOTTOM VIEW



1. Battery compartment
2. WAKE UP LIGHT ON-OFF: Enable / disable light for alarm sequence
3. DISPLAY BRIGHTNESS HIGH-LOW: Select LCD display brightness HIGH / LOW
4. AUDIO LINE-IN: Socket for connecting to external music storage device
5. RESET: Reset unit to default settings

LCD DISPLAY



1. AM/PM
2. / / : Beep / Radio / Rooster crow alarm selected
3. : Alarm with wake up light enabled
4. : Batteries low / no battery
5. Alarm time
6. Radio Mode is ON and frequency is displayed
7. Volume is displayed
8. Sleep mode is ON and remaining time is displayed
9. : Nature sound selected (1-4)
10. : Sound from external source plugged into unit

GETTING STARTED

REPLACING LAMP

For first time use, take out provided light bulb and go directly to step 4.

1. Unplug unit from wall socket and allow unit (bulb) to cool for approx. 15 minutes.

CAUTION Always allow unit to cool for 15 minutes prior to cleaning, storing, replacing parts as unit can be very hot.

2. Push in **OPEN / COVER** tab to release lamp cover. Lift cover off.



3. Unscrew old bulb.
4. Screw in new bulb.
5. Push in **OPEN / CLOSE** tab and slide lamp cover back in place.

NOTE This unit uses **75 W** light bulbs. The built-in protection feature will automatically shut down the unit when the temperature inside the lamp cover is too high. Please allow this unit to cool until the temperature inside is within a safe range.

CONNECT TO POWER SOURCE

Memory backup:

1. Remove the battery compartment cover.
2. Insert the batteries (2xAAA), matching the polarities.
3. Replace the battery compartment cover.

NOTE Batteries should not be exposed to excessive heat such as sunshine or fire.

Before selecting a location to place the unit, consider the following:

- Ensure there is approximately 15 cm between unit and closest object, such as walls or other objects.
- Ensure there is at least 40 cm space above the top of the unit for ventilation purposes.
- Ensure distance between unit and wall socket is not longer than the power cord itself.

Batteries serve as a back-up power supply. To fully utilize all features, plug into wall socket.

To completely disconnect from power, the unit should be disconnected from the wall socket.

NOTE The main unit should not be exposed to wet conditions. No objects filled with liquid, such as vases, should be placed on the main unit.

CLOCK

MANUALLY SET CLOCK

1. Press **SET CLOCK** to enter setting mode.
2. Press + or - to change the settings or press and hold + / - to rapidly change the settings.
3. Press **SET CLOCK** to confirm and move to next setting. The settings order is: 12/24 hr format, time.

RADIO

To activate / deactivate radio:

- Press **RADIO** to turn radio on / off.

To set radio station:

1. Press **RADIO** to turn radio on.
2. Press and hold to auto search or press to manually select frequency.

SOOTHING NATURE SOUNDS

NOTE Deactivate radio first. Radio OFF will be displayed on screen.

To activate / deactivate soothing sounds:

1. Press **NATURE SOUND** to play sounds.
2. Press **NATURE SOUND** repeatedly to select desired sound (1-4) or to turn sound off.

ADJUST VOLUME

To adjust volume:

- Press + / - when radio or nature sound is turned on.
- TIP** Press and hold + / - to rapidly adjust volume.

ALARM

To set the alarm:

1. Press **SET ALARM** to enter setting mode.
2. Press + / - to change the settings or press and hold + / - to rapidly change the settings.
3. Press **SET ALARM** to confirm and move to next setting.
4. Repeat steps 2-3 for all setting options. The settings order is: time, alarm sound (select from beep/radio/rooster crow)

NOTE If radio alarm is selected, radio will play for 60 minutes at set alarm time.

For your convenience, the volume and radio frequency will be stored in memory for the next time radio is turned on.

To activate / deactivate alarm:

- Press **ALARM**.

To silence the alarm:

- Wave your hand in front of the unit (motion sensor) to silence it for 8 minutes

OR

- Press any button to turn the alarm off and activate it again after 24 hours.

ALARM WITH WAKE UP LIGHT

To activate / deactivate wake up light:

- Slide **WAKE UP LIGHT** switch to **ON / OFF**.

When wake up light has been activated, will be displayed next to ALARM on the LCD screen.

NOTE Light will fade-in (gradually increase in brightness) 30 minutes prior to set alarm time. Light will stay on (even after SNOOZE has been pressed) after set alarm time for 60 minutes.

SLEEP TIMER

To adjust sleep timer setting:

1. Turn on desired option:

OPTION	PRESS:
Radio	RADIO
Light	LAMP
Soothing sound	NATURE SOUND

2. Press **SLEEP** to activate.
3. Press **SLEEP** repeatedly to change the sleep timer setting (120, 90, 60, 30, 15, 0 min).

After 5 seconds of inaction, the timer will automatically be confirmed and set.

To view time remaining:

- Press **SLEEP**.
- TIP** Press **SLEEP** again to change sleep timer (120, 90, 60, 30, 15, 0 min).

NOTE Ensure radio or sound and/or light has been selected to activate sleep timer.

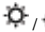

NOTE If light option has been chosen for sleep timer, light will fade out.

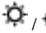
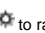
READING LAMP

To turn on / off light:

- Press **LAMP** located at the bottom left of LCD display.

To adjust level of brightness:

- Press  /  to increase or decrease brightness.


TIP Press and hold  /  to rapidly change level of brightness (1-20).

For your convenience, the level of brightness will be stored in memory for the next time light is turned on.

NOTE Do not look directly at the light.

PLAY MUSIC

Using a cable, plug one end to your music storage device and one end to **AUDIO LINE-IN** located at the back of unit.

When device has been successfully connected,  will be displayed on the LCD screen and sound will emit from speakers.

LCD BACKLIGHT

To adjust brightness:

- Slide **DISPLAY BRIGHTNESS** switch to **LOW / HIGH**.

RESET

1. Remove and reinsert the batteries.
2. Press **RESET** to return to the default settings.

SNOOZE

To silence the alarm:

- Wave your hand up to 8 cm (3 inches) in front of the **SNOOZE IR** motion sensor to silence it for 8 minutes (**ALARM** will blink during this time)

OR

- Press any key to turn the alarm off and activate it again after 24 hours.

SPECIFICATIONS

MAIN UNIT

TYPE	DESCRIPTION
H x W x D	257 x 199 x 140 mm (10.12 x 7.84 x 5.51 in)
Weight	386 g (13.6 oz) without battery
FM	87.5 to 108 MHz
Power	Input: AC 220-240V 50/60Hz (EU version) Input: AC 100-120V 50/60Hz (US/Canada version) 2 x UM-4 (AAA) 1.5V batteries (for backup)

PRECAUTIONS

- Do not subject the unit to excessive force, shock, dust, temperature or humidity.
- Do not cover the ventilation holes with any items such as newspapers, curtains etc.
- Remove dust regularly with a dry cloth. Accumulated dust poses a potential fire hazard.
- Do not immerse the unit in water. If you spill liquid over it, dry it immediately with a soft, lint-free cloth.
- Do not clean the unit with abrasive or corrosive materials.
- Do not tamper with the unit's internal components. This invalidates the warranty.
- Only use fresh batteries. Do not mix new and old batteries.
- Images shown in this manual may differ from the actual display.

- When disposing of this product, ensure it is collected separately for special treatment.
- Placement of this product on certain types of wood may result in damage to its finish for which Oregon Scientific will not be responsible. Consult the furniture manufacturer's care instructions for information.
- The contents of this manual may not be reproduced without the permission of the manufacturer.
- Do not dispose old batteries as unsorted municipal waste. Collection of such waste separately for special treatment is necessary.
- Please note that some units are equipped with a battery safety strip. Remove the strip from the battery compartment before first use.

NOTE The technical specifications for this product and the contents of the user manual are subject to change without notice.

ABOUT OREGON SCIENTIFIC

Visit our website (www.oregonscientific.com) to learn more about Oregon Scientific products. If you're in the US and would like to contact our Customer Care department directly, please visit: www2.oregonscientific.com/service/support
OR
Call 1-800-853-8883.

For international inquiries, please visit:

www2.oregonscientific.com/about/international

EU-DECLARATION OF CONFORMITY

Hereby, Oregon Scientific, declares that this **Sunrise Wake-Up Clock** (model: WS902) is in compliance with the essential requirements and other relevant provisions of Directive 1999/5/EC. A copy of the signed and dated Declaration of Conformity is available on request via our Oregon Scientific Customer Service.



FCC STATEMENT

This device complies with Part 15 of the FCC Rules. Operation is subject to the following two conditions: (1) This device may not cause harmful interference, and (2) This device must accept any interference received, including interference that may cause undesired operation.

WARNING Changes or modifications not expressly approved by the party responsible for compliance could void the user's authority to operate the equipment.

NOTE This equipment has been tested and found to comply with the limits for a Class B digital device, pursuant to Part 15 of the FCC Rules. These limits are designed to provide reasonable protection against harmful interference in a residential installation.

This equipment generates, uses and can radiate radio frequency energy and, if not installed and used in accordance with the instructions, may cause harmful interference to radio communications. However, there is no guarantee that interference will not occur in a particular installation. If this equipment does cause harmful interference to radio or television reception, which can be determined by turning the equipment off and on, the user is encouraged to try to correct the interference by one or more of the following measures:

- Reorient or relocate the receiving antenna.
- Increase the separation between the equipment and receiver.

- Connect the equipment into an outlet on a circuit different from that to which the receiver is connected.
- Consult the dealer or an experienced radio / TV technician for help.

DECLARATION OF CONFORMITY

The following information is not to be used as contact for support or sales. Please call our customer service number (listed on our website at www.oregonscientific.com), or on the warranty card for this product) for all inquiries instead.

We

Name: Oregon Scientific, Inc.
Address: 19861 SW 95th Ave., Tualatin,
Oregon 97062 USA
Telephone No.: 1-800-853-8883

declare that the product

Product No.: WS902
Product Name: Sunrise Wake-Up Clock
Manufacturer: iPM Concepts Limited
Address: Block C, 9/F, Kaiser Estate,
Phase 1, 41 Man Yue St., Hung Hom,
Kowloon,
Hong Kong

is in conformity with Part 15 of the FCC Rules. Operation is subject to the following two conditions: 1) This device may not cause harmful interference. 2) This device must accept any interference received, including interference that may cause undesired operation.