

CONTENTS

INTRODUCTION	1
GETTING STARTED	2
THE CAMERA	2
INSTALLING THE BATTERY	4
TURNING THE CAMERA ON/OFF	5
LED INDICATOR	5
TAKING PICTURES	5
INSTALLING THE SOFTWARE	6
CONNECTING YOUR CAMERA TO A PC	7
USING THE SOFTWARE	8
DOWNLOAD PICTURES FROM CAMERA TO PC	8
PHOTO BASE	10
PHOTO STUDIO	12
PHOTO FANTASY	16
PHOTO PRINTER	19
PHOTO MONTAGE	23
TAKING CARE OF YOUR CAMERA	26
SPECIFICATIONS	27

INTRODUCTION

With the DS 3838 Digital Camera, you can take exciting photos, and have fun playing around with them on your PC. You can add special effects, designs and shapes, make montages, and then print them out for memories that will last a long time.

This manual will help you get started with the DS 3838 Digital Camera. Read it carefully and try out the various functions. If you take good care of your camera, it will give you years of digital fun and enjoyment.

The ArcSoft © software with this camera includes the following:

PhotoBase - downloads your photos from the DS 3838 Digital Camera to your PC, and organizes them in an album to store all your digital camera photos.

PhotoStudio - change your photos, add color, special effects, crop and change size, plus lots more fun features.

PhotoFantasy - put your face or your friends' faces on a lot of different bodies and scenes. There are many fun fantasies to play around with, from Olympic heroes to bathing beauties.

PhotoMontage - make a collage or montage of your photo for fun effects

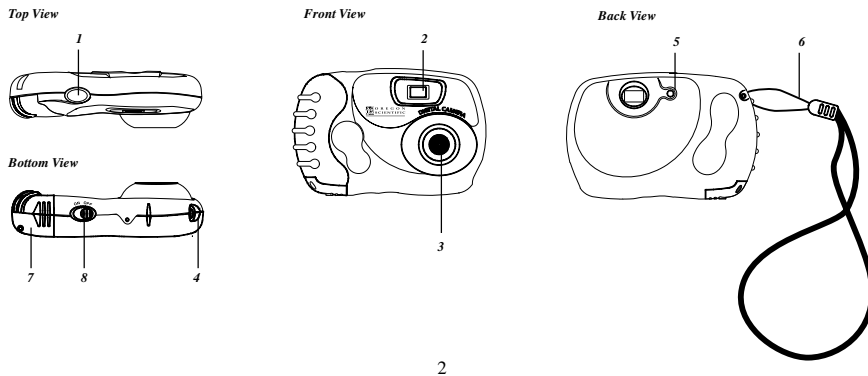
PhotoPrinter - print your photos in lots of ways, add frames, edges and backgrounds. (You must have an inkjet or laserjet printer to use this.)

GETTING STARTED

To begin using your camera, you must first install battery. Please read the directions below. If you are not sure how to do this, ask an adult to help you.

To use the camera with a PC, please read the specifications at the back of this manual for system requirements.

THE CAMERA



1. CAPTURE BUTTON

Press this to take a picture.

2. VIEWFINDER

Look through this to see what you are taking a picture of.

3. LENS

Aim this at what you want to take a picture of.

4. PC INTERFACE SOCKET

Plug the camera connector at the end of the cable in here, to connect your camera to a PC.

5. LED INDICATOR

When this light is on, it will tell you if the camera is ready to take a picture.

6. CARRYING STRAP

For carrying your camera.

7. BATTERY COVER

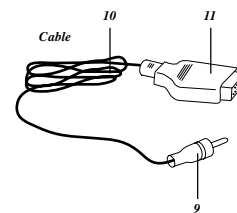
This is the cover for the battery compartment. You must remove it to put in a new battery. Always make sure to put the battery cover back on carefully before you turn the camera on.

8. ON/OFF SWITCH

Turns your camera on and off. Make sure this is turned off before you replace the battery.

9. CAMERA CONNECTOR

Plug this into the camera to connect it to a PC.



10. CABLE

The cable connects your camera to a PC.

11. PC 9-PIN PLUG

Insert this end into the serial port of your PC.

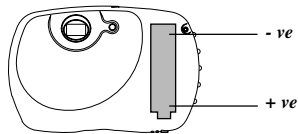
INSTALLING THE BATTERY

Your camera uses one 1.5V AA size alkaline battery.

Before you install the battery, make sure your camera is turned OFF.

To install the battery,

- Use a screwdriver to unscrew the battery cover.
- Lift the battery cover off the camera and put the battery into the compartment.
- Make sure to put the battery in the correct way, with the + facing the right direction - see diagram.



- Put the cover back on, and screw it in again.

4

TURNING THE CAMERA ON/OFF

To turn the camera on,

- Slide the switch at the bottom of the camera to ON.
- The LED indicator light will blink a few times, and then remain steady. The camera is now ready to take pictures.
- When you have finished taking pictures, be sure to slide the switch to OFF. Keep the camera OFF when you are not using it.

LED INDICATOR

The LED indicator light tells you the status of your camera:

- If blinking quickly, it's searching for the correct exposure. You should not take a picture if it is blinking quickly.
- If on steadily, your camera is now ready to take a picture.
- If blinking slowly, the camera memory is full, and you cannot take any more pictures.
- If the LED indicator does not come on, or if it blinks quickly for a few seconds and then turns off, the battery needs to be replaced.

TAKING PICTURES

To take a picture

- Make sure the camera is turned ON.
- Point the lens at what you want to take a picture of.
- Look through the VIEWFINDER to make sure you can see the subject clearly.
- Check the LED indicator. When the light is steady, the camera is ready to take a picture.
- Press the CAPTURE BUTTON.
- The LED indicator light will go off for a few seconds. When it comes on again, and is steady, the camera is ready to take the next picture.

5

- Sometimes, if it is very bright or very dark when you are taking a picture, the LED indicator will continue to blink. You can still take a picture when the light is blinking, but the picture may not be very clear.
- You can take up to 15 pictures with your camera. After that, you must erase the pictures from your camera memory so you can take some more. To do this, please follow the instructions in the section "Download your Pictures from Camera to PC." You can also take pictures while your camera is connected to your PC.
- When you are finished taking pictures, make sure you turn the camera OFF.

INSTALLING THE SOFTWARE

Before you install the software on your PC, please check the specifications in the back of this manual to be sure you have the correct features on your PC. Your camera does not have to be connected to the PC yet.

To install the software in your PC,

- First make sure that there are no applications (like games or anti-virus software) running on your PC.
- Insert the CD into the CD-ROM drive on your PC.
- After a few seconds, a setup menu should appear on your screen.
- The "Choose Setup Language" dialogue box will appear. Select the language you want displayed during the setup process, and click OK.
- Follow the directions to setup and install the software. (Please be sure to read and accept the license agreement when it appears on your screen.)
- If no setup menu appears automatically on your screen after you insert the CD, you can do this instead:
 - In Windows, click the START button, and then click RUN from the START menu.
 - Type d:/setup and press ENTER. ("d" means the CD-ROM drive. If your drive has a different letter, like "e" type that instead).

6

- Setup will then start running. Follow the directions on your screen.

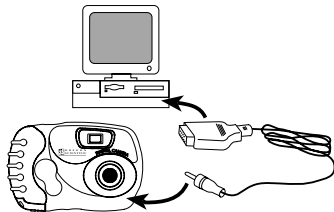
REGISTER YOUR SOFTWARE

Before you start using the software, please be sure to register it. To do this, click PROGRAMS/ARCISOFT/REGISTER & UPGRADE and follow the instructions on the screen.

CONNECTING THE CAMERA TO YOUR PC

To connect your camera to a PC,

- Make sure the camera is turned OFF.
- Using the cable, insert the PC 9-pin plug to the serial port of your PC. If your computer has a 25-pin serial port, you will need a 9-to-25 pin adapter (not included). Insert the adapter into the serial port of your PC, and then insert the 9-pin plug of the cable into the adapter.
- Insert the CAMERA CONNECTOR end of the cable into the PC INTERFACE SOCKET on the camera.



7

- Turn the camera ON.
- You are now ready to download your photos to the PC. First make sure that the software has been installed in the PC.

USING THE SOFTWARE

To run the exciting software that comes with your camera, click the START button in Windows. From the START menu, click PROGRAMS and then click ARCSOFT PhotoStudio Suite. When the ARCSOFT menu is displayed, click the software you would like to use. Remember, before you can use the software, you must first download your photos from the camera memory to your PC.

DOWNLOAD YOUR PHOTOS FROM CAMERA TO PC

Before you can use the software to have fun with your photos, you must download the photos from the camera to the PC.

To download photos with PhotoBase,

- First, connect your camera to the PC as explained above, and turn it ON.
- Next, on your PC, click START/PROGRAMS/ARCSOFT.
- Click PHOTOBASE.
- The following PhotoBase window will appear on your desktop.



8

DOWNLOAD PHOTOS

- To download the photos from your camera to the PC, click ACQUIRE (the camera icon). The "Select Source" dialogue box will appear on your screen. Click on "Oregon Scientific Camera DS3838" and click SELECT. The following window will appear on your screen.



DON'T FORGET :

Thumbnail photos are not saved until you ACQUIRE your selected photos to your album (PC) by following the steps below.

- The pictures in your camera will appear as thumbnails in this window.
- To download a single photo, click on the thumbnail photo and click the ACQUIRE button. Only that photo will load into your PhotoBase album.
- To download selected photos, press and hold the [Ctrl] key, click the thumbnail photo one by one, and then click the ACQUIRE button.
- To download all the photos, press and hold the [Shift] key, click on the first and the last thumbnail photo, then click ACQUIRE.

9

ERASE THE PHOTOS IN YOUR CAMERA

- To erase all the photos from your camera memory, click **FORMAT CAMERA**. Make sure you have loaded all your photos you want into your PC before you do this. The photos in the camera will be deleted when you click **format CAMERA**.

UPDATE THUMBNAILS

- If you open the Oregon Scientific driver window and no thumbnails appear, click "**UPDATE THUMBNAILS**" button. If you take more pictures while you have this window open, click **UPDATE THUMBNAILS** again to show thumbnails of the new pictures.

CANCEL

- Click **CANCEL** to stop downloading pictures and close the Oregon Scientific window. You can also click the in the right corner of the Oregon Scientific window.

PHOTO BASE

When you have loaded your photos from your camera to a PC, you can use PhotoBase to arrange them in your own photo album on the PC. You can also create slide shows, video post cards, fun presentations, or email pictures to your friends.

Make a new album:

- When you first open the software, at the top of your screen, you will see "ALBUM [New] ". This means that it is ready to make a new album. Also at the top of the screen, you will see a row of icons (small pictures). These

10

icons let you add photos to a new album, print photos, erase photos from your album, send a photo by email, and other fun activities.

- If you have downloaded your photos from the camera, they will already be on your screen. If you would like to add other pictures or photos to the album, click the **ADD** icon. Find the directory where you've saved your other pictures or your photos. Click on the pictures you want, and click **OPEN**. You can do this one picture at a time, or select all the pictures at the same time.
- After you add the photos to your new album, you can make a title, date, and description for each one. Just click on each photo and put the information at the bottom of the screen.
- Make sure you to save the new album. To do this, click the **SAVE** icon, type a name for your album, and click **OK**.

Put photos from scanner in your album:

- You can also put scanned photos in your album. To do this, click **ACQUIRE** and select your scanner. (You must have a scanner connected to your PC). Follow the directions on your screen to scan the photo.

Print the thumbnail images in your album:

- You can print the thumbnail images in your album. To do this, click **PRINT** (the printer icon). You can select just one image, or all the images to print. Only the small thumbnail images will print, not the full photos.

Sort the thumbnail images in your album:

- To change the order of the images in your album, click **SORT**. You can sort by title, date, order, etc. You can also change the order of the images by clicking on one image and dragging it to a new location, before or after another image.

Erase photos in your album:

- You can erase any images in your album you don't want. To do this, click on the image you don't want, and then click **DELETE** (the trash can icon). You can select just one image, several images, or all the images to delete.

11

Make a slide show, Web page or video postcard with the photos in your album:

- You can make a slide show, video postcard, or Web album with your photos. To do this, click on the images you would like to use, and then click MAKE A PRESENTATION (the CD icon). Select which kind of presentation you would like, and follow the directions on your screen.

Send a photo by email:

- Send a photo to a friend by email. To do this, click on the image you want to send, and then click MAIL THE CURRENT IMAGE FILE (the envelope icon). You must have an email account and email software in your computer to do this.

Use other software:

- At the bottom of your PhotoBase window, you will see some icons for other software: PhotoStudio, PhotoPrinter, PhotoFantasy and PhotoMontage. You can start these directly from the PhotoBase window. Just click and drag the image of your photo to another software icon.

PHOTO STUDIO

After you have arranged your photos in an album, you can have fun changing the way they look. With PhotoStudio, you can edit and retouch your photos, changing colors, cutting and pasting, adding special effects and other fun enhancements.

To start PhotoStudio

- On your PC, click START/PROGRAMS/ARCSOFT.
- Click PHOTOSTUDIO. OR
- From PhotoBase window click the PhotoStudio icon or drag the photo you want to play with onto the PhotoStudio icon.
- The following PhotoStudio window will appear on your desktop.



If you started PhotoStudio by dragging your image onto the PhotoStudio icon from the PhotoBase window, your photo will be displayed. At the top of the main window you can see a menu line, which shows different commands for editing and changing your photo. Three small windows will be open inside the PhotoStudio window. These are the Tools, Brush, and Color Palette windows.

To open a photo:

- To open a photo, click FILE on the menu line, and then click OPEN. Choose the directory where you saved your photos, and click on the photo you want to edit. If you started PhotoStudio by dragging your image onto the PhotoStudio icon from the PhotoBase window, your photo will already be displayed. You can also open photos directly from your digital camera. To do this, click FILE and then ACQUIRE. Click SELECT SOURCE to select Oregon Scientific Camera DS3838, and follow the same way as PhotoBase to download pictures. (please refer to "DOWNLOAD PHOTOS" in the PhotoBase section).

Use TOOLS to edit and retouch your photo:

- Included in PhotoStudio are a complete set of editing and re-touching tools like airbrush, text, magic wand, smudge, zoom and more. To use these tools, first click on the tool you would like to use. Next, move the mouse onto the photo. (The shape of the mouse changes to the shape of the tool you have chosen.) Click on the photo, and while holding down the left mouse button, drag the mouse to perform the tool action. Different tools may work in different ways. Let's practice with some of the main tools:
 - **SELECT Tools** - there are 3 SELECT tools in the tool window - rectangular, ellipse, and freehand. These tools let you select different shaped parts of your photo. To use them, just press and drag the mouse in the making.
 - **CROP Tool** - this tool lets you cut out the part of your photo you selected using the SELECT tools. You can copy the cropped part onto another photo, make a separate photo out of it, or use it in another way.
 - **TEXT Tool** - use this to put words and text in your photo. Just click the TEXT tool, and then click on the part of your photo you want to add text to. Type your text in the window that pops up and click OK. You can also change the text style by clicking FONT in the TEXT window, and selecting a different font and size.
 - **STAMP Tool** - click on this and drag across your photo to make stars, butterflies, birds or other shapes.
 - **ZOOM Tool** - select this tool, and then click on the photo to make the size in the window bigger or smaller. You can also do this by selecting VIEW in the menu line, and clicking ZOOM IN or ZOOM OUT.
 - **PAINTBRUSH Tool** - use this to add color to your photo. Select a color using the COLOR PALETTE, and then click and drag the paintbrush across your photo.
 - **COLOR SWATCHES Tool** - when you change colors using the COLOR PALETTE, this tool will display the main color in front. The color in the background square in an alternate color for use with some of the tools.

There are many other tools and ways to use each tool. Try them out by yourself. You can also click on the HELP command on the menu line. This will tell you how to use everything in more detail.

Use the BRUSH window:

- This window lets you change the size and style of the PAINTBRUSH tool. You can click on the up or down arrows in SIZE to make the brush bigger or smaller, in SPEED make it paint faster, and change the shape of the brush to square or round or line.

Use the COLOR PALETTE window:

- You can choose from 256 different colors in this window. Just click on the color you like, and use it with a tool. When you click on a color, the COLOR SWATCHES tool will change to that color.

Make Special Effects:

- Change your photo into an oil painting, make a ripple effect, and create other cool effects by using the EFFECTS command in the menu line.
- Choose one of the SELECT tools from the TOOLS window, and select the part of your photo you want to change. You can make the special effect for the whole photo too.
- Click EFFECTS and then click on the effect you want to create. The part of the photo you have selected will change to that effect. If you did not select part, then the whole photo will be changed to that effect.

Save your edited photo:

- After you have changed your photo by adding special effects, using the tools and color palette, be sure to save the changes. Click on FILE in the top menu line, and then click SAVE. To save the photo with a different name (so you can keep the original photo unchanged), click SAVE AS and type in a new name for your photo.

Help

- Click HELP to learn how to use each function in more detail.

Exit

- Click the in the top right corner of the PhotoStudio window to exit the software.

There are many other ways you can edit and change your photos using PhotoStudio. Try out the functions on the top menu line, and use the HELP command to learn new tricks.

PHOTO FANTASY

When you have touched up your photo and added effects and colors, you can have more fun creating a special fantasy photo. Add your face or your friends' faces to funny scenes, beach beauties or muscle men, or create your own movieposter.

To start PhotoFantasy,

- On your PC, click START/PROGRAMS/ARCISOFT.
- Click PHOTOFANTASY. (You can also start PhotoFantasy from the PhotoBase window by dragging your photo onto the PhotoFantasy icon.)
- The following PhotoFantasy window will appear on your desktop.



NOTE: You must keep the CD in your CD-ROM drive to use this software.

16

Get a fantasy:

- Click on the GET FANTASY star to choose a fantasy scene. There are some different categories to choose from. Click on the fantasy picture you like, and click OKAY. (Make sure the CD is inserted in the CD-ROM drive.)

Add your photo:

When you have selected your fantasy, the area your photo will be inserted is shaded in a color.

- Click GET PHOTO (the star icon 1) to choose a photo. If you started PhotoFantasy by dragging your image onto the PhotoFantasy icon from the PhotoBase window, the photos in your photo album will be displayed. You can also select a sample photo from the SAMPLE photo album.
- To choose a different photo, click ADD. Select the directory where you saved your photos and double click the photo you'd like to insert in your fantasy. (The default directory is Oregon Scientific)
- You can also open photos directly from your digital camera. To do this, click ACQUIRE and then follow the directions above for downloading your photos.
- You can also put scanned photos in your fantasy. To do this, click ACQUIRE and follow the directions for your scanner. (You must have a scanner attached to your PC to do this.)
- After you have selected your photo, click OKAY.
- If you have selected a fantasy with more than one figure, the GET PHOTO star icons (2 and 3) will be highlighted. Repeat the steps above to insert more photos.



17

Adjust your fantasy:

After you have inserted the photos in your fantasy, you can adjust the color, size, direction and position. First, click on the photo you want to adjust. (This is the "active photo.") Then click on any of the buttons to adjust your picture:

- **FLIP** button - click this to flip the active photo horizontally.
- **MOVE** buttons - click these to move the active photo up, down, left, or right. You can also move the active photo with your mouse. Just move the mouse onto the active photo, hold down the left mouse button, and drag the photo up, down, left or right.
- **RESIZE** buttons - click these to make the active photo bigger or smaller.
- **ROTATE** buttons - click these to turn the active photo clockwise or counterclockwise.
- **ADD TEXT** button - click this to add titles or funny words to your photo. Just type the text you want.
- **SLIDERS** - click and drag these to make your active photo brighter or darker, to change the contrast, and to adjust the color saturation.
- **ZOOM** buttons - click these to zoom your fantasy picture in and out
- **MATCH COLOR** button - click this to change the color of your photo to the fantasy.

Print your fantasy:

You can print your fantasy picture:

- **PRINTER SETUP** - click this to change your printer setup.
- **COPIES** - select how many pictures you want to print using this.
- **CENTER** - put your picture in the center of the paper.
- **ORIENTATION** - choose the direction to print your picture on the paper: vertical or horizontal.
- **BORDER** - add a border to your picture with this.
- **OKAY** - print your fantasy picture.
- **CANCEL** - cancel the print function and return to your fantasy picture screen.

Save your fantasy:

- Click **SAVE AS** to save your fantasy picture. Choose the directory where you want to save your picture and click **Save**. You can also adjust the picture quality by using the **Quality** slider at the bottom of your **SAVE AS** window.

Start over:

- This will clear the screen and let you select a new fantasy to have fun with.

Send email:

- Click here to send your fantasy picture by email. You must have an email account and software to use this function.

Help

- Click **HELP** (the question mark icon) to learn how to use each function in more detail.

Exit

- Click the in the top right corner of the PhotoFantasy window to exit the software.

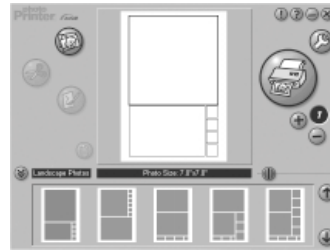
PHOTO PRINTER

Have fun printing your photos using the PhotoPrinter software. You can print a single picture, arrange many different pictures on one sheet, or print them in lots of other ways.

To start PhotoPrinter,

- On your PC, click **START/PROGRAMS/ARCISOFT**.

- Click PHOTOPRINTER. (You can also start PhotoPrinter from the PhotoBase window by dragging your photo to the PhotoPrinter icon.)
- The following PhotoPrinter window will appear on your desktop.



Get photos:

- Click on the GET PHOTO button to load your photo. (The button will be blinking.) If you started PhotoPrinter by dragging your image onto the PhotoPrinter icon from the PhotoBase window, the photos in your photo album will be displayed. You can also select a sample photo from the SAMPLE photo album.
- To choose a different photo, click ADD. Select the directory where you saved your photos, and double click the photo you'd like to print. (The default directory is Oregon Scientific)
- You can also open photos directly from your digital camera. To do this, click ACQUIRE and then follow the directions above for downloading your photos.
- You can also print scanned photos. To do this, click on ACQUIRE and follow the directions for your scanner. (You must have a scanner attached to your PC to do this.)

Choose the style and size for your photo arrangement:

- When you have selected your photo, you can choose a print layout. The center of the screen shows the current layout of your page in white with black rectangles showing where pictures will display. Along the bottom you'll see a few of the available layouts. These will let you print single photo, or a few images of the same photo, or variety of photos on one page.
 - TEMPLATE LAYOUT - you can select the layout style here. If you choose NONE, just one photo will be displayed. You can also choose Landscape Photos, Portrait Photos, Mixed Photos, and several others. Click on the up and down arrows to see the selections for each layout. When you find a layout you like, just click on it.
 - PHOTO SIZE - change the size of your photo here. Use the slider button to the right of PHOTO SIZE to change the size.
- Click GET PHOTO again to choose a second photo. Repeat the steps above to add more photos to your layout.
- After you have selected your photos, click the OK button (hand icon) at the bottom of the screen.



Edit your photos:

When you have selected your photos and print layout, you can change the size, brightness, contrast and other enhancements. You can also change the photo size and layout here.

- CROP PHOTO - you can change the size of your picture by clicking here. The Crop Screen will appear. On the left you can choose the size of crop you want. Use the slider button to scroll through the sizes. When you have

chosen your crop size, you can move the crop area around by clicking inside with your mouse and dragging your mouse around. You can also grab the corners of the crop rectangle and drag them to resize it. Click OK to return to the Main Preview Screen. Repeat the same steps for each photo in your layout you want to crop. If you want to cancel the changes you have made, click CANCEL. If you want to save the changes you have made, click SAVE AS.

- EDIT PHOTO - enhance the appearance of your photos. Click on the photo you want to enhance, and then click the EDIT button. On the left you can choose the type of enhancement, like brightness, contrast, and so on. Use the slider button to scroll through the enhancements, and click on the one you want to adjust. You can then change the appearance of the photo by using the slider button to the right of the photo. When you have finished adjusting your photo click OK to return to the Main Preview Screen. Repeat the same steps for each photo in your layout you want to crop. If you want to cancel the changes you have made, click CANCEL. If you want to save the changes you have made, click SAVE AS.
- CLEAR PAGE - click this to clear all the photos from the Preview screen, and return to the GET PHOTO screen.
- PRINTER SETUP - when you have finished selecting and editing all your photos, you are ready to print. Click the PRINTER SETUP button to set up your printer.
- PRINT - click the PRINT button to print your photo layout.
- COPIES - choose how many copies of your photo layout you want to print.

Save your photo layout

- Click the SAVE AS button in the Main Preview screen to save your photo layout.

Help

- Click HELP to learn how to use each function in more detail.

Exit

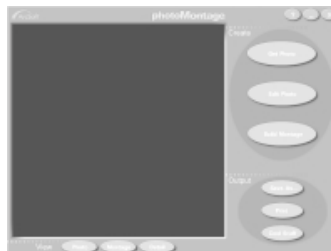
- Click the in the top right corner of the PhotoPrinter window to exit the software.

PHOTO MONTAGE

Turn your photo into an exciting collage (montage) using the PhotoMontage software. You can change your photo into a wild design of many different images.

To start PhotoMontage,

- On your PC, click START/PROGRAMS/ARCISOFT.
- Click PHOTOMONTAGE. (You can also start PhotoMontage from the PhotoBase window by dragging your photo onto the PhotoMontage icon.)
- The following PhotoMontage window will appear on your desktop.



NOTE: You must keep the CD in your CD-ROM drive to use this software.

Get photo:

- Click on the GET PHOTO button to load your photo. If you started PhotoMontage by dragging your image onto the PhotoMontage icon from the PhotoBase window, the photos in your photo album will be displayed. You can also select a sample photo from the SAMPLE photo album.
- To choose a different photo, click ADD. Select the directory where you saved your photos, and double click the photo you like. If you want to delete a photo from the images displayed, click DELETE.
- You can also open photos directly from your digital camera. To do this, click ACQUIRE and then follow the directions above for downloading your photos.
- You can also put scanned photos in your montage. To do this, click on ACQUIRE and follow the directions for your scanner. (You must have a scanner attached to your PC to do this.).
- Click OKAY.

Edit photo:

When you have selected your photo, you can crop it, and adjust the brightness and contrast. After you click OKAY in the Get Photo screen, you will see the Create Photo screen. Here you can edit your photos and create a montage. Click EDIT PHOTO. You will see your photo and the following buttons:

- CROP ASPECT RATIO - choose the size of crop you want. Click the down arrow to scroll through the sizes. When you have chosen your crop size, you can move the crop area around by clicking inside with your mouse and dragging your mouse around. You can also grab the corners of the crop rectangle and drag to resize.
- BRIGHTNESS - use the slider button to change the brightness of your photo.
- CONTRAST - use the slider button to change the contrast of your photo.
- SAVE AS - click here to save the changes you have made to your photo.
- OKAY - click here to continue to the montage screen.
- CANCEL - click here to cancel any changes you made and return to the Create screen.

Build montage

When you have edited your photo, you are ready to create a montage. Click BUILD MONTAGE.

- CD COLLECTION - choose the montage image collections here. Your CD must be inserted in your CD-ROM drive to see these collections. To scroll through these CD collections, click the up/down arrows. Choose as many CD collections as you want by clicking up to three times on each desired title. You can also choose the Hidden Treasure and Signature image collections displayed.
- MICRO-IMAGE COUNT- you can choose the total number of micro-images in your photomontage here. Be careful. If you choose a large size, it may create a huge output file which will take a long time to print.
- MICRO-IMAGE SIZE - choose between small, medium and large size micro-images here.
- MICRO-IMAGE PATTERN - this lets you specify how micro-images are lined up with one another
- MICRO-IMAGE REPETITION - lets you choose how often your micro-images are used, from unlimited repeat to never repeat.
- GRID & BORDER - lets you add gridlines and/or border to your montage creation.
- OKAY - click here to continue to the montage screen.
- CANCEL - click here to cancel any changes you made and return to the Create screen.

When you have clicked OKAY in the BUILD MONTAGE screen, your photo will be displayed and the montage will start to build. This takes a little time, so please wait. When your montage is ready, it will be displayed. You can view the original photo by clicking PHOTO or you can see the montage in more detail by clicking DETAIL.

Save your montage

- Click SAVE AS to save your montage

Print your montage

- Click PRINT to print your montage.

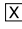
View other micro-images

- Click COOL STUFF to see other micro-image collections through the Internet. You must be connected to the Internet to use this.

Help

- Click HELP to learn how to use each function in more detail.

Exit

- Click the  in the top right corner of the PhotoMontage window to exit the software.

TAKING CARE OF YOUR CAMERA

This camera has been made to give you years of fun if you handle it carefully. Here are a few precautions:

1. Do not put the camera in water.
2. Do not clean the camera with household cleaners, abrasive or corrosive materials.
3. Use a slightly damp, soft cloth to clean the camera casing.
4. To clean the lens, first remove dust and dirt by gently blowing on the lens. Then clean the lens with a lens cleaning tissue.
5. Do not use strong force on the camera or keep it in a very hot or cold place.
6. Do not tamper with the unit's internal components. Doing so will invalidate the warranty on the unit and may cause unnecessary damage.
7. Only use fresh alkaline batteries as specified in these instructions. Do not leave batteries in the camera if you are not going to use it for a long time.

26

8. Never play with the batteries. Swallowing a battery could be fatal. To avoid risk of explosion, do not recharge, open, or heat a battery or dispose of it in fire.
9. Always read the user instructions thoroughly before operating the unit.

SPECIFICATIONS

CAMERA

MEMORY	:	15 pictures
POWER	:	1 x 1.5 -volt AA size battery
BATTERY LIFE	:	3 hours for continuous use
AUTO OFF	:	1 minute
TEMPERATURE	:	0 - 40°C (32°F - 104°F) for operation -20° - 60°C (-4° - 140°F) for storage
DIMENSIONS	:	99 (L) x 65 (D) x 26 (H) mm
WEIGHT	:	77 grams

27



OPERATION MANUAL

 OREGON
SCIENTIFIC



086-002178-068
English

COMPUTER

- Microsoft Windows 95, Microsoft Windows 98, or Microsoft Windows NT installed on your PC
- Multimedia PC with Pentium 90 or higher processor
- 16 MB RAM
- 120 MB of available hard-disk space
- Active 9-pin serial port
- CD-ROM drive (6X or higher)
- Windows compatible sound card
- Microsoft mouse or compatible
- Super VGA monitor at 800 x 600 resolution
- 1 MB VRAM video card
- Inkjet or Laser printer (optional for printing photos)

