

**CE**  
086-002865-052

**DS6628**

User's Manual  
Mode d'emploi  
Bedienungsanleitung  
Manuale dell'utente  
Manual del Usuario  
Manual do Usuário



 OREGON  
SCIENTIFIC

**FCC NOTICE**

This equipment has been tested and found to comply with the limits for a Class B digital device, pursuant to Part 15 of the FCC Rules. These limits are designed to provide reasonable protection against harmful interference in a residential installation. This equipment generates, uses, and can radiate radio frequency energy and, if not installed and used in accordance with the instructions, may cause harmful interference to radio communications.

However, there is no guarantee that interference will not occur in a particular installation. If this equipment does cause harmful interference to radio or television reception, which can be determined by turning the equipment off and on, the user is encouraged to try to correct the interference by one or more of the following measures:

- Reorient or relocate the receiving antenna.
- Increase the separation between the equipment and receiver.

Changes or modifications not expressly approved by Oregon Scientific for compliance could void the warranty and your authority to use this equipment.



**TABLE OF CONTENTS**

<b>INTRODUCTION</b> .....	3	<b>PC SOFTWARE INSTRUCTIONS</b> .....	14
Brief Description .....	3	System Requirements .....	14
Package Contents .....	3	Installing the Software .....	15
Safety Notes .....	4	Installing Oregon Scientific Photo Album .....	15
Notes on the Digital Camera .....	4	Connecting the Camera to a PC .....	17
Notes on the Battery .....	5	Charging the Battery .....	18
Other Notices .....	5	Using Oregon Scientific Photo Album .....	19
<b>KEY FEATURES</b> .....	6	Downloading Images .....	20
Front View .....	6	Displaying Downloaded Images .....	23
Back View .....	6	Modifying Camera Settings .....	25
Liquid Crystal Display .....	7	Using Oregon Scientific Photo Album as	
<b>GETTING STARTED</b> .....	8	TWAIN Driver .....	29
Attaching the Strap .....	8	Uninstalling the Software .....	31
Switching Camera On/Off .....	8	<b>TROUBLESHOOTING</b> .....	32
Using the SD Memory Card .....	9	<b>SPECIFICATIONS</b> .....	34
<b>BASIC PHOTOGRAPHY</b> .....	10	<b>TRADEMARK INFORMATION</b> .....	35
Taking Pictures .....	10	<b>ADDITIONAL RESOURCES</b> .....	35
Macro Mode .....	11		
Using the Flash Module .....	11		
Resolution Setting .....	12		
Deleting Images .....	13		
Setting the Beep Tone .....	13		



**DS6628**



User's Manual

**INTRODUCTION**

**Brief Description**

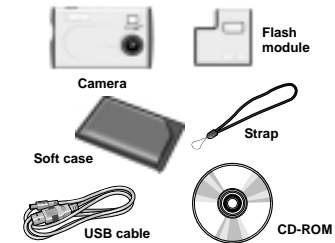
Thank you for selecting the Oregon Scientific™ Card-Sized World's Slimmest 1.3 Mega-Pixel Digital Camera as your personal product of choice. Your digital camera is designed to give you many years of reliable service. It includes the following features:

- **Slim and Compact Design**  
No bigger than a credit card and only 8mm thick, this digital camera is incredibly light and portable.
- **Status Display**  
State-of-the-art LCD display informs you of the remaining image count, battery level, and various operation status.
- **Advanced Camera Functions**  
In addition to the inclusion of the detachable flash module, the camera is able to take pictures in Scene or Macro modes.
- **SD Memory Card Compatibility**  
Your digital camera is compatible with SD Memory Cards, enabling you to increase your device's storage capacity.

**Package Contents**

When you unpack your Digital Camera, make sure to keep all the packing materials in a safe place, in case you need to later transport the device or return it for servicing.

In the box, you will find:



User's manual, Quick start guide

**Safety Notes**

To ensure that you use your camera correctly, read these Safety Notes and your User Manual carefully beforehand. The warnings given here provide important safety information and should be observed at all times.

**GENERAL WARNING**

- The enclosed disc is a computer CD-ROM disc. Never attempt to play this disc on an ordinary music CD player, as it may produce extremely high noise levels that could damage your hearing or your audio equipment.
- Do not immerse the device in water.
- Do not, under any circumstances, touch the exposed electronic circuitry of the device as there is a danger of electric shock should it become exposed.
- Take special care when handling a damaged LCD display, as the liquid crystals can be harmful to your health.
- Do not use or store the device, including the remote sensor, in locations that may adversely affect the product such as rain, snow, desert, and magnetic fields.
- Do not subject the camera to impact or shock.
- Check all major functions when the device is unused for a long period of time. This is to ensure its full operation. Maintain a regular internal testing and cleaning of your device.
- Do not look through the viewfinder at the sun or other strong lights. This could damage your eyesight.
- Avoid leaving the camera in locations exposed to direct sunlight as this could cause fires due to the action of the lens.

- Remove the memory card before storing the camera for long periods of time. Then, remove the camera from the case and keep it in a well-ventilated place in order to prevent molding.

**Notes on Digital Camera**

**Cleaning your Camera**

Cleaning	
Lens / Viewfinder	Use a blower or a lens brush to remove dirt or dust. Wipe carefully with a soft cloth to remove fingerprints and other stains. Do not touch with fingers.
Body	Clean with a damp cloth; dry immediately.

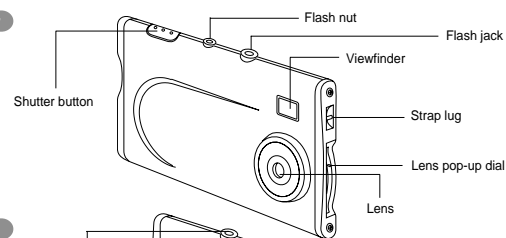
- Do not use benzene, thinner, or similar cleaning agents to clean your camera, as these may cause permanent damage not covered by the warranty.
- Do not scratch hard objects against the lens, LCD or viewfinder as these surfaces are easily damaged.

**Handling your Camera**

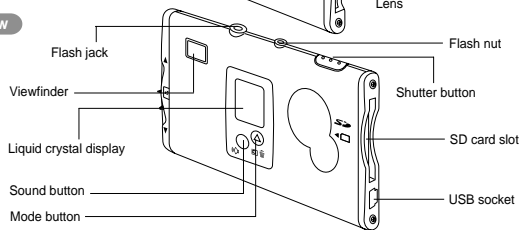
- For particularly important photographs (such as weddings and overseas trips), always take a test photograph and view the image to make sure that the camera is functioning normally.
- Do not use the camera while you are walking, running, driving or operating machinery. This can result in serious accidents.
- Do not use this device in aircrafts or hospitals. The use of the camera can cause malfunctions in the control devices of other equipment.

**KEY FEATURES**

**Front View**



**Back View**



**Other Notices**

**Disposing of these Products**

When disposing of these products, do so in accordance with your local waste disposal regulations.

**Statement of Responsibility**

Oregon Scientific assumes no responsibility for any incidental losses (such as the costs of photography or the loss of income from photography) incurred as a result of faults with this product.

**Notes on Copyright**

Images recorded using your digital camera cannot be used in ways that infringe copyright laws without the consent of the owner, unless intended only for personal use. Note that some restrictions apply to the photographing of stage performances, entertainments and exhibits, even when intended purely for personal use. Users are also asked to note that the transfer of memory containing images or data protected under copyright laws is only permissible within the restrictions imposed.

**Notes on Battery**

- This camera has a built-in lithium-polymer battery. Always observe the precautions given below.
- The built-in lithium-polymer battery is not fully charged at shipment and must be charged up before being used.

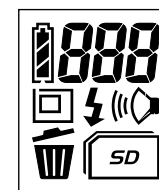
**Lithium-polymer Battery Features**

- Lithium-polymer Battery loses its charge even when not used. Charge the battery just before taking pictures (1 to 2 days beforehand).
- To ensure that your lithium-polymer battery lasts as long as possible, push the lens back and switch the camera off promptly when you are not using the camera.
- The number of available shots will be lower in cold locations or at low temperatures. You can increase the amount of power produced by putting the camera in your pocket or another warm place to heat it just before taking pictures. If you are using a heating pad, take care not to place the camera directly against the pad.

**Charging the Battery**

- This camera can be charged at ambient temperatures between 0°C to 40°C. It takes approximately 2 hours to charge a fully depleted battery.
- The lithium-polymer battery does not need to be fully discharged or exhausted before being charged.

**Liquid Crystal Display**

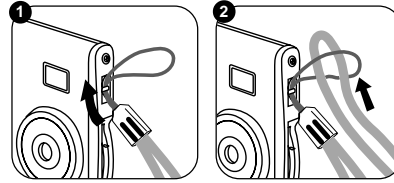


LCD	Description	See page
888	Number of Available Shots.	P.12
Battery Status icons	Battery Status [Full battery icon] : The battery has ample charge. [Half battery icon] : The battery is approximately half charged. [Low battery icon] : The battery charge is low. Recharge the battery as it will run out shortly. [Flash 5 times icon] (Flashes 5 times and the camera switches off.) : The battery is exhausted. Recharge the battery immediately. * Avoid switching the camera on and off repeatedly when the battery is low on charge.	P.18
Image Size icon	Image Size [Large icon] : 1280 x 1024 pixels [Small icon] : 640 x 480 pixels	P.12
Delete Mode icon	Delete Mode	P.13
DEL, ALL, For icons	DEL : Deletes the last image shot ALL : Deletes all the images For : Formats the memory	P.13
Beep Tone icon	Beep Tone on	P.13
Flash on icon	Flash on	P.11

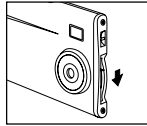
## GETTING STARTED

### Attaching the Strap

Attach the enclosed strap. When using a commercial strap, check the strength and other properties of strap.

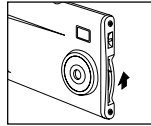


### Switching On



Turn the lens pop-up dial to ON.

### Switching Off



Turn the lens pop-up dial back to OFF.

### Auto Power Off Function

The Auto Power Off function automatically switches the camera off to avoid wasting battery power when the camera is left unused for 30 seconds while switched on.

- \* The Auto Power Off function does not operate when a USB connection is being used.
- \* To take pictures after the camera has automatically switched off (Auto Power Off), press the Mode button or Sound button to turn on the camera again.
- \* If you intend to leave the camera unused for a long period, turn the lens pop-up dial to OFF option to switch off the camera.

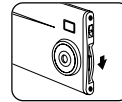
8

## BASIC PHOTOGRAPHY

### Taking Pictures

**NOTE** Be sure that the camera has enough battery life before taking pictures. If needed, charge the camera before use (→ P.18).

- 1 Switch the camera on.



Loading the strap over your wrist, brace your elbows firmly against your body and hold the camera steadily with both hands. Compose your shot so that the subject you want to photograph is within the field of view.

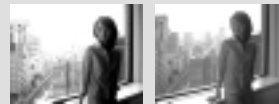
**NOTE** The image will be blurred if the camera moves when taking the picture (camera shake). Take care to avoid camera shake, particularly when shooting in dark locations.

10

- 3 When you press the shutter button, the camera takes the picture. The image is then recorded and the number in the counter decreases.

### About the Autobrite® Technology

The DS6628 uses a CMOS sensor equipped with Autobrite® technology. This feature automatically adjusts the exposure and captures the details in scenes with bright lighting conditions, such as glare or backlighting. Most existing digital cameras produce washed out or silhouetted images under such conditions.



Standard Digital camera

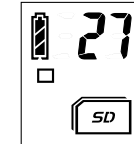
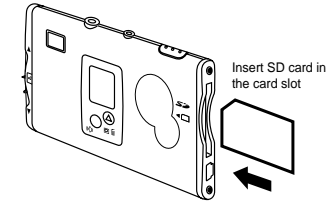
DS6628

10

### SD Memory Card

The SD Memory Card is an external memory card that can be plugged into your Digital Camera. You can store extra images onto the card, in addition to the camera's own internal 16MB memory. When you insert the SD card into the camera, a "SD" card icon will be displayed on the LCD. This indicates the shots to be taken will be stored into the SD card only.

**Caution:** Make sure the camera is turned off before inserting the SD Memory card.



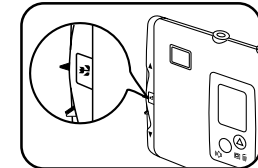
SD card icon is displayed when card is inserted

**NOTE** The camera can only work with one kind of memory at a time. If the SD Memory card is installed, the images and camera settings in the camera's internal memory will **NOT** be available.

9

### Macro Mode

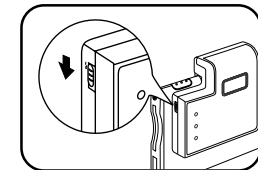
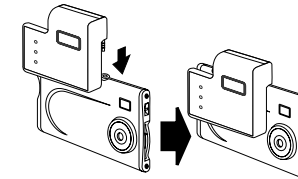
This camera allows you to take pictures in scene mode as well as macro mode for near objects. When the lens pop-up dial is turned to On, it is in scene mode. To activate the macro mode, you can just simply turn the lens pop-up dial from On to "M" icon. Then, you can capture the objects in a short distance.



### Using Flash Module

You can use this camera with a detachable flash module in order to take pictures in an environment without enough light source.

To connect the flash module, insert the plug of the flash into the jack of the camera main unit. Turn on the power switch of the flash located at the side of the camera. The "F" icon is then displayed on the LCD screen. Now the camera is ready to take pictures with flash.



11

### Resolution Setting

You can select the appropriate image size for your shots. The number of available shots varies depending on the selected image size setting, and the number of available shots shown by the counter increases or decreases accordingly.

#### About the Image Size

Select "□" for higher resolution and "□" to increase the number of available shots.

LCD	File size	Number of available shots
□	1280 x 1024 pixels	21 shots
□	640 x 480 pixels	84 shots

#### NOTE

- If an SD card is installed, the number of available shots will differ from the above table, depending on the memory capacity of the card.
- Try using the guidelines below to select the appropriate setting for your shot.
  - (1280 x 1024 pixels):  
For images to be used in business documents (printed relatively small). For images to be used in files used for presentations.
  - (640 x 480 pixels):  
For images to be used via the Internet as an e-mail attachment, etc.

12

## PC SOFTWARE INSTRUCTIONS

### System Requirements

Because this camera uses USB bus power to charge the battery, the software must be installed beforehand.

#### Pre-installation Checklist

##### WIN Windows

- Compatible PCs : IBM PC/AT or compatible (models with USB support as standard)
- Operating system : Windows 98 (including the second edition), Windows Millennium Edition (Windows Me), Windows 2000 Professional\*, Windows XP Professional\*, Windows XP Home Edition\*
- CPU : 200 MHz Pentium or better
- RAM : 32MB minimum
- Hard disk space: 200MB minimum
- Other : A CD-ROM for driver and software installation
- \* Users of Windows 2000 Professional, Windows XP Professional, Windows XP Home Edition should log on under an Administrator account (e.g. "Administrator").

##### Mac Macintosh

- Compatible Macs : Power Macintosh G3 200 MHz minimum (models with USB support as standard)
- Operating system : Mac OS 9.x or above
- RAM : 32MB minimum
- Hard disk space : 200MB minimum
- Other : A CD-ROM for driver and software installation

### Guide to Software

The enclosed CD-ROM contains the software shown below.

#### Oregon Scientific Photo Album

Install



How to Use

Software for tasks such as downloading images you have shot on the camera, checking and deleting the downloaded images, and modifying the camera settings. This software is also used when a TWAIN-compatible application downloads images directly from the camera.

- When you install "Oregon Scientific Photo Album", the camera driver and TWAIN driver are also installed automatically.

\* This software is needed to connect the camera to your PC using the USB cable.

#### PhotoImpression3.0

Software to make it easy for you to download camera images and modify them, create calendars or postcards.

\* This software is TWAIN-compatible.

14

### Delete Images

You cannot check images as you delete them, but you can use **DEL** to delete the last image you shot, or **ALL** to delete all the images or **FOR** to format the memory.

- Holding down the **DEL** button for roughly 1 second sets the delete mode to **DEL**/Delete frame.

**NOTE** Press the **DEL** button again to select **ALL** (delete all frames).

- Each time you press the shutter button, images are deleted sequentially from the newest image.

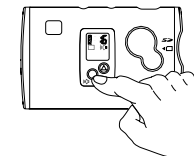
#### NOTE

- When you select **DEL**, the newest frame (frame 5 if you have taken 5 shots) is deleted. Pressing the shutter button again deletes frame 4, then frame 3, etc.
- You can delete all the frames at once by selecting **ALL**.
- You can format the memory by selecting **FOR**.
- If you leave the camera in **DEL** delete mode for 3 seconds without using the camera at all, it automatically reverts to photography mode.

### Beep Tone

You can select whether or not the beep tone sounds. You can turn the beep tone on and off by pressing the **BE** button.

\* When "00" is displayed, the beep tone sounds.



### Installing Software

#### INSTALLING Oregon Scientific Photo Album

Do not connect the camera to your PC using the USB cable until the software installation is completed.

#### NOTE

##### WIN For Windows

\* In Windows, you can install "Oregon Scientific Photo Album" and "PhotoImpression3.0" in succession.

- Switch on your PC and load the enclosed CD-ROM.
- The installer starts up automatically.
- Install Oregon Scientific Photo Album.
  - \* The camera driver and TWAIN driver are also installed automatically.



When you have finished the installation, [Oregon Scientific Photo Album]'s short cut is displayed on the desk top.

- Install PhotoImpression3.0.
- When you click the [Finish] button, your PC is restarted.

#### Starting up the installer manually

**NOTE** Double-click [SETUP] or [SETUP.exe] in the CD-ROM window.



- The way file names are displayed differs as described below depending on your computer settings.
- File extensions (3-letter suffixes indicating the file type) may be shown or hidden (e.g. Setup.exe or Setup)
- Text may be shown normally or all in uppercase (e.g. Setup or SETUP).

You can select the softwares you want to install.

- Deselected software is not installed.



You can change the installation destination folder.

The screen on the left appears in Windows 2000 and Windows XP, but it has been confirmed that installation can continue without problems. Just click the [Continue Anyway] button.

15

**Mac For Macintosh**

Do not connect the camera to your computer using the USB cable until the software installation is completed.

- 1 Switch on your Macintosh and load the enclosed CD-ROM.



CD-ROM

- 2 Double-click the CD-ROM icon, the [Oregon Scientific Photo Album] folder and [Oregon Scientific Photo Album] icon to start installation.
- 3 Click the [Continue...] button to start the installation.
- 4 Click the [Quit] button.

**NOTE**

You can change the installation destination folder.

These files are installed on your Macintosh.



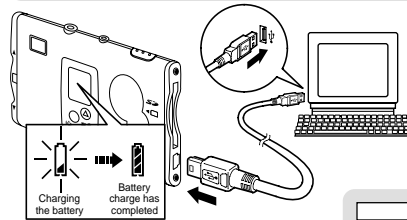
- [Oregon Scientific Photo Album]'s alias:  
On the desk top
- [Oregon Scientific Photo Album] folder:  
In your Macintosh's hard disk
- [AXIADeviceDriver]  
[TWAIN Data Sources]  
[TWAIN Source Manager]  
In the [Extensions] folder  
inside the [System] folder on  
your Macintosh's hard disk

16

**Charging the Battery**

This camera uses USB bus power to charge the battery. Before attempting to charge the battery, install the software (→P.15) and then use the USB cable to connect the camera to your PC.

Check that "Oregon Scientific Photo Album" software was installed correctly before connecting the camera to your PC using the USB cable.



Charging starts automatically when you connect the camera to your PC with the USB cable.

**NOTE**

- It takes approximately 2 hours to charge a fully depleted the battery.
- Number of available shots: Approx. 500 shots (when fully charged)
- This figure is an approximate guide to the number of continuous shots that can be taken at room temperature. The number of available shots will be lower in cold locations or at low temperatures.

**About the Battery Life**

At normal temperatures, the battery can be used at least 500 times.

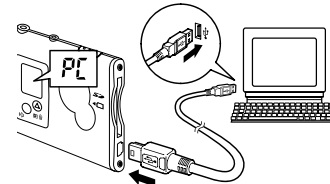
- If the time for which the battery provides power shortens markedly, this indicates that the battery has reached the end of its effective life. Please contact the store from which you purchased the camera. Battery must be replaced at the customer's expense.

18

**Connecting the Camera to a PC <Using the USB Cable>**

Connecting the camera to your PC with the enclosed USB cable, you can charge the battery and download your images to your PC.

Switch the camera on and then connect it to your PC using the USB cable.

**■ Connecting the camera to your PC with the USB cable allows you to do the following:**

- Charge the camera battery (→P.18)
- Download and display images (→P.20, 23)
- Modify the camera settings, delete images, format the camera memory and reset the counter (→P.25)

When you connect the camera to a PC, "PC" appears on the camera's LCD to indicate that the camera is communicating with the PC.

- \* The PC switches to standby mode until it recognizes the camera.

**NOTE**

- Take care to connect the plugs on the USB cable into the correct sockets, and ensure that the plugs are inserted firmly.
- The Auto Power Off function does not operate when a USB connection is being used.

17

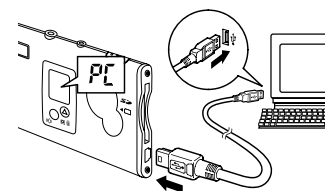
**Using Oregon Scientific Photo Album**

You can use "Oregon Scientific Photo Album" software to download images in the camera to your PC's hard disk, check and delete the downloaded images, and modify the camera settings.

\* This description shows the Windows screens, but the procedure is the same for Macintosh computers.

- 1 Switch the camera on and then connect it to your PC using the USB cable (→P.17).  
\* Charging starts automatically when you connect the camera to your PC with the USB cable (→P.18).

- 2 Double-click the [Oregon Scientific Photo Album] to launch "Oregon Scientific Photo Album".



- 3 The main window opens.  
\* You can change the "Oregon Scientific Photo Album" settings in [Options].  
\* You can change the save destination folder for the images.

19

### Downloading Images

You can download the images from the camera to your PC.

- 1 Select [Camera] → [Download images] from the menu.

#### NOTE

- When you connect the camera to a PC, "PC" appears on the camera's LCD to indicate that the camera is communicating with the PC.
- The PC switches to standby mode until it recognizes the camera.
- The counter flashes (rotates) during image downloading.

- 2 Click the [Start download] button to begin image downloading.

#### NOTE

- If you cancel image downloading before completion, downloading stops after downloading of the current image is completed.
- The images in the camera are all downloaded together. If you take more shots and then download them without first deleting the images you have already downloaded, the previously downloaded images are downloaded again.

#### Download from camera internal memory to PC

When this checkbox is selected, the images in the camera internal memory will be downloaded.

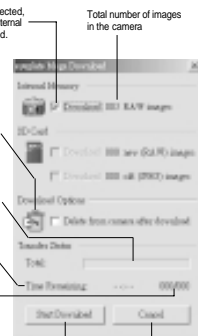
When this checkbox is selected, the images in the camera are deleted when downloading is completed.

Download progress. When the progress bar reaches the right-hand end, downloading is completed.

Time until downloading is completed

Number of downloaded images/Total number of images in the camera (internal memory)

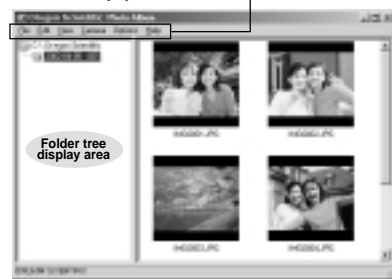
Start to download the image



Cancels downloading

- 3 When image downloading is complete, the images are displayed as thumbnails.
  - A folder named "(year)-(month)-(day)-(number)" is automatically created in the folder tree display area.
  - If you download more images on the same day, the number automatically increments.

#### Thumbnail display window



#### NOTE

Images are downloaded to the locations given below.

**Windows:**  
[Oregon Scientific]  
folder on the local disk



#### Menu

You can select functions such as [Save As], [Delete (Delete the files)], [Rename (Change the file name)], [Rotate], [View (Change the display format)] and [Configuration (Camera Configuration)], etc. from the pull-down menu.

#### Delete the files

- Select the file you want to delete and then select [Delete] from the [File] menu.

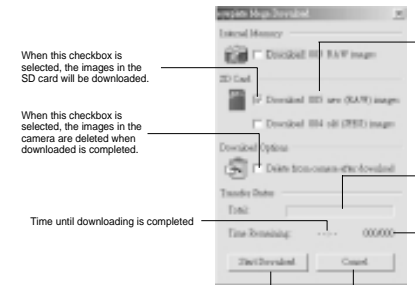
#### Rename the file/folder name

- Select the file/folder you want to rename and then select [Rename] from the [File] menu.
- Click the file/folder you want to rename and then click again in the file/folder name box.

**Macintosh:**  
[Oregon Scientific] folder  
on the desk top



### Download SD card memory to PC



When this checkbox is selected, the images in the SD card will be downloaded.

When this checkbox is selected, the images in the camera are deleted when downloading is completed.

Time until downloading is completed

Start to download the image

#### NOTE

- If the internal memory and SD card checkboxes are selected, the images in both memories will be downloaded.

Total number of images in the SD card

Download progress. When the progress bar reaches the right-hand end, downloading is completed.

Number of downloaded images/Total number of images in the SD card

Cancels downloading

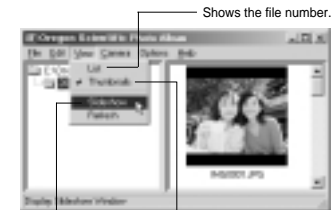
### Displaying Downloaded Images

Images downloaded to your PC can be checked, rotated and saved as new files under different names.

- 1 Select the folder you want to display in the folder tree display area.



- 2 Select the display format from the [View] menu.



Shows the image and the file number.

Opens the slideshow display window (→P.24).

#### Displaying a frame enlarged (→P.24)

- To view an image frame enlarged, select and then double-click the file in the List or Thumbnail view.
- Select the frame containing the image file you want to view enlarged and select [View] from the [File] menu.

### ■ Slideshow/Single-frame enlarged display window

Display the next image

Display the previous image

Go to first image

Fit image to window

Go to last image

Starts the slideshow

Stops the slideshow

Faster slideshow

Slower slideshow

Saves the currently displayed image as a new file with a different name.

Rotates the image left (counterclockwise) in 90° increments and the modified image is saved immediately

Rotates the image left (clockwise) in 90° increments and the modified image is saved immediately

### ■ Oregon Scientific Media configuration screen

Number of downloaded images/Total number of images

Internal Storage [3MS] Delete All Format

SD Card [0150] Delete All Format

File Name Counter [0428] Reset Storage

Delete all data in the camera internal memory

Format the camera internal memory

Delete all data in the SD card

Format the SD card

Updates the screen to show the latest information on the camera.

- Clicking the [Update] button when you connect another camera to the PC updates the screen to show the information for the new connected camera.

Resets the file counter

- The file numbers for the next images shot begin again from "0001"
- Only available when [Delete All Images] or [Format] is selected.

Update

Close

Closes the window

### Modifying Camera Settings

Camera settings can be checked and modified from your PC. You can also delete all the image files, format the camera memory and reset the file counter (file number).

Check that the camera is connected to a PC with the USB cable (→P.17).

The "Oregon Scientific Config" screen opens and you can perform tasks such as modifying the camera settings and deleting all the data in the camera's memory.

**NOTE** When the camera settings are modified in the "Oregon Scientific Config" screen, the settings on the camera are also switched automatically.

- About the file counter (file numbers)  
File numbers (No. 0001 to 9999) are automatically assigned to images when they are shot. The assigned file numbers are then saved with the images during downloading.
- Because the file numbers assigned when shots are taken are stored on the camera, the file numbers of images do not change while they remain on the camera.
- If you delete an image on the camera after shooting it, the file number of the deleted file is skipped.
- When you reset the file counter, the file numbers for the next images shot begin again from "0001". However, the file counter can only be reset when [Delete All Images] or [Format] is selected in the "Oregon Scientific Config" screen.
- Low Light Alert: When this feature is enabled, the camera warns the user that a scene is too dark for a proper picture. Under such dim lighting conditions, the camera will make an error beep when the shutter button is pressed. Keeping the shutter button pressed during and after the beep will force the snapshot, if desired, but the quality of the picture will most likely be sub-standard.
- Auto Shutoff timeout: User can select the auto shutoff timeout with short (~25 seconds) or long (~50 seconds). The factory default is short.

### ■ Oregon Scientific Options configuration screen

Beep sound ON/OFF

Select resolution

Activate/deactivate low light lockout

Select short/long Auto Shutoff

Beep

Resolution

Low Light Lockout

AUTO SHAKY

Update

Close

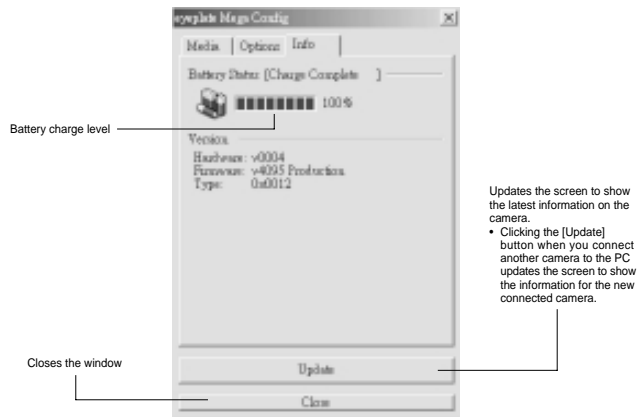
Closes the window

Updates the screen to show the latest information on the camera.

- Clicking the [Update] button when you connect another camera to the PC updates the screen to show the information for the new connected camera.



### ■ Oregon Scientific Info configuration screen

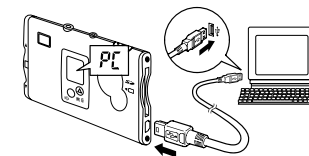


### Using Oregon Scientific Photo Album as TWAIN Driver

"Oregon Scientific Photo Album" allows images on the camera to be downloaded directly from the camera using a TWAIN-compatible application such as "PhotoImpression3.0".

Check that "Oregon Scientific Photo Album" software was installed correctly before connecting the camera to your PC using the USB cable.

- 1 Switch the camera on and then connect it to your PC using the USB cable.
- 2 Launch a TWAIN-compatible software application, select the device and download your images.



Choose the [Oregon Scientific Digital Camera] to select the "Oregon Scientific Photo Album (TWAIN Driver)".

\* The method for selecting the TWAIN driver differs depending on the software you are using. If you are using "PhotoImpression3.0".

When "Oregon Scientific Photo Album (TWAIN driver)" is selected, "Oregon Scientific Download" screen opens.

#### NOTE

- Take care to connect the plugs on the USB cable into the correct sockets, and ensure that the plugs are inserted firmly.
- The Auto Power Off function does not operate when a USB connection is being used.

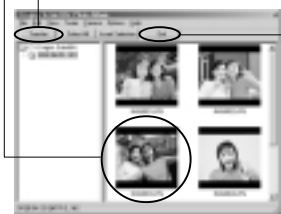
- 3 Click the [Start Download] button to download the images.



**NOTE** The counter flashes (rotates) during image downloading.

### WIN For Windows only

- 4 Select the images to be downloaded.
- 5 Click the [Transfer] button.
  - You can also download images using the [Transfer] button from the [Twain] menu.
  - Downloaded images are displayed in the software.



- 6 Quit "Oregon Scientific Photo Album".

### Uninstalling the Software

Only perform this operation when you no longer require the installed software.

#### WIN For Windows

- 1 Check that the camera is not connected to your PC and then start up your PC.
- 2 Exit all application and programs.
- 3 Select the program you want to delete from [Programs] in the [Start] menu and then select [Uninstall].
- 4 Select the [Remove] and click the [Next] button.
- 5 When the confirmation message appears, click the button as directed by the on-screen instructions.
  - The confirmation message differs depending on the software you select.

#### NOTE

You can also uninstall the software using [My Computer] → [Control Panel] → [Add/Remove Programs Properties].

Even if you uninstall the software, the folder containing your saved images ("Oregon Scientific" in the case of "Oregon Scientific Photo Album") is left untouched.

#### Mac For Macintosh

- 1 Drag all the following installed files to the [Trash].
  - The installed files for "Oregon Scientific Photo Album" (→P.19)



- 2 Restart your Macintosh.
- 3 Select [Empty Trash] in the [Special] menu.

## TROUBLESHOOTING

Problem	Symptom	Check This	Remedy
No Power	Power will not turn on.	Batteries are exhausted.	Recharge the batteries (→ P.18)
Taking Pictures	Cannot take pictures when the Shutter Release Button is pressed.	Camera is not turned on.	Turn on the camera.
		No space on the SD Memory card / Internal Memory	Delete unwanted files (→ P.13) or insert a new SD Memory card (→ P.9)
		The Auto Power-Off function has switched the camera off.	Switch the camera on.
Camera will not focus.	Camera will not focus.	Subject is not in the center of the Lens Viewfinder.	Move the subject to the center of the Lens Viewfinder.
		Check your current Focus Mode.	Switch from your current Focus Mode to either the Macro or the Scene Mode.
Flash does not go off as expected.	Flash does not go off as expected.	Flash is not turned on.	Switch on the Flash Module.
		Flash has not finished charging.	Wait until the Flash icon is displayed again (→ P.11).
Image taken appears too dark or blurred.	Image taken appears too dark or blurred.	The camera or subject was moving when the shot was taken.	Hold the camera firmly.
		The subject is too near.	Use the Macro Mode (→ P.11) or move away from the subject.
		The lens is dirty.	Clean the lens with a soft cloth (→ P.4).
		The pop-up lens is skewed.	Take care to pop the lens up correctly so that it is not skewed.

32

Problem	Symptom	Check This	Remedy
PC Connection	PC does not recognize the camera.	Check the USB cable connection.	Make sure both ends of the USB cable are connected.
		Interference from other USB devices.	Disconnect other USB devices from the PC.
		Check computer	Connect the camera to the PC with the USB cable and select [My Computer] → [Control Panel] → [System] → [Device Manager]. In the [Device Manager] window, delete [Compose USB device] or [Unknown device] in [Other devices]. Then disconnect the camera and install the software before reconnecting the camera to the PC.
Camera malfunctions during use.	Electrostatic discharge interfered with the camera.	Check if the camera is connected to the PC.	Turn off the camera, and then turn it back on. If connected to the PC, disconnect the camera from the USB cord, and turn it off then on again.
Everything on the LCD flashes and "7" or "8" is displayed.	Camera firmware defect.	Sync firmware with PC.	If the "Camera firmware is out of sync. Update recommended. Update firmware?" message appears when you connect the camera to your PC with the USB cable, click the [Yes] button and update your firmware.

33

## SPECIFICATIONS

### MAIN UNIT

Type	Description
Image Sensor	CMOS sensor with Autobrite® technology. Total number of pixels: 1.3 million
Image Size	Selectable from: SXGA: 1280 x 1024 pixels VGA: 640 x 480 pixels
File Format	JPEG (converted when images are downloaded using the enclosed software).
Lens	F = 3.2, f=6.87mm (equivalent to 47mm on a 35mm camera)
Focus	Fixed
Focal Range	60cm ~ ∞ (infinity)
Sensitivity	Equivalent to ISO100
Flash Distance	Approx. 0.8m ~ 2m
Finder	Optical
White Balance	Autobrite®
Shutter Speed	Automatic (1/30 - 1/15000 sec.)
Operation Environment	Temperature: Approx. 0°C ~ 40°C (32°F to 104°F) Humidity: 80% or less (no condensation)
Internal Memory	16MB non-volatile flash memory
Storage Media	SD Memory Card
Digital Output	USB 2.0 interface to PC
Windows Software	Oregon Scientific Photo Album
Product Dimension	86 x 54 x 8 mm (width x height x depth)
Unit Weight	Approx. 40g (1.4oz.) (including battery, not including accessories)
Battery Specification	Lithium-polymer battery (rechargeable, non-removable)

34

### FLASH MODULE

Type	Description
Effective Distance	1 to 2 meters
Power Supply	1.5V AAA-size alkaline battery x 1
Dimensions	55 x 22 x 12 mm (width x height x depth)
Unit weight	Approx. 38g (1.3oz.)

## TRADEMARK INFORMATION

Microsoft and Windows are trademarks of the Microsoft Corporation of the United States and other countries. Windows is an abbreviated term referring to the Microsoft Windows Operating System.

Macintosh is a registered trademark of Apple Computer, Inc.

CompactFlash and CF are trademarks of SanDisk.

Arcsoft Impression and Arcsoft Impression logo are registered trademarks of Arcsoft Inc.

Autobrite is a registered trademark of SMaL Camera Technologies Inc., Cambridge, Mass., USA.

## ADDITIONAL RESOURCES

Visit our website ([www.oregonscientific.com](http://www.oregonscientific.com)) to learn more about your digital camera and other Oregon Scientific products such as hand-held organizers, alarm clocks, and weather stations. The website also includes contact information for our customer service department, in case you need to reach us.

© 2003 Oregon Scientific. All rights reserved.

35