



**Music Element  
2.1 CD Micro System  
Model: HMS388  
User Manual**

## IMPORTANT SAFETY INSTRUCTIONS

The Music Element 2.1 CD Micro System is designed to give you years of service if handled properly. Ensure that you heed all warnings to minimize product malfunction and reduce the chances of incurring personal injury. Before using the unit, observe the following guidelines to ensure proper care and maintenance.

### WARNING

- TO PREVENT FIRE OR SHOCK HAZARD, DO NOT USE THIS PLUG WITH AN EXTENSION CORD, RECEPTACLE OR OTHER OUTLET UNLESS THE BLADES CAN BE FULLY INSERTED TO PREVENT BLADE EXPOSURE.
- TO REDUCE THE RISK OF FIRE OR ELECTRIC SHOCK, DO NOT EXPOSE THIS APPARATUS TO RAIN OR MOISTURE.



The lightning flash with arrowhead symbol, within an equilateral triangle, is intended to alert the user to the presence of uninsulated "dangerous voltage" within the product's enclosure that may be of sufficient magnitude to constitute a risk of electric shock to persons.



**WARNING: TO REDUCE THE RISK OF ELECTRIC SHOCK, DO NOT REMOVE COVER (OR BACK) NO USER SERVICEABLE PARTS INSIDE. REFER SERVICING TO QUALIFIED SERVICE PERSONNEL.**



The exclamation point within an equilateral triangle is intended to alert the user to the presence of important operating and maintenance (servicing) instructions in the literature accompanying the appliance.

- 1) Read these instructions.
- 2) Keep these instructions.
- 3) Heed all warnings.
- 4) Follow all instructions.
- 5) Do not use this apparatus near water.
- 6) Clean only with dry cloth.
- 7) Apparatus shall not be exposed to dripping or splashing and no objects filled with liquids such as vases, shall be placed on the apparatus.
- 8) Do not block any ventilation openings. Install in accordance with the manufacturer's instructions.
- 9) Do not install near any heat sources such as radiators, heat registers, stoves, or other apparatus (including amplifiers) that produce heat.
- 10) Do not defeat the safety purpose of the polarized or grounding-type plug. A polarized plug has two blades with one wider than the other. A grounding type plug has two blades and a third grounding prong. The wide blade or the third prong are provided for your safety. If the provided plug does not fit into your outlet, consult an electrician for replacement of the obsolete outlet.
- 11) Protect the power cord from being walked on or pinched particularly at plugs, convenience receptacles, and the point where they exit from the apparatus.
- 12) Only use attachments / accessories specified by the manufacturer.
- 13) Unplug this apparatus during lightning storms or when unused for long periods of time.
- 14) Refer all servicing to qualified service personnel. Servicing is required when the apparatus has been damaged in any way, such as power-supply cord or plug is damaged, has been exposed to rain or moisture, does not operate normally, or has been dropped.

**NOTE** The rating label is printed on the bottom casing of the main unit and speaker, and at the back of the subwoofer.

# Oregon

## S C I E N T I F I C

Music Element  
2.1 CD Micro System  
Model: HMS388

### USER MANUAL

## CONTENTS

<b>Important Safety Instructions</b> .....	<b>1</b>
<b>Introduction</b> .....	<b>3</b>
<b>Getting Started</b> .....	<b>3</b>
Unpacking .....	3
<b>Product Overview</b> .....	<b>4</b>
CD Player .....	4
VFD Display .....	4
Remote Control .....	5
NXT* Satellite Speakers and Subwoofer .....	5
<b>Maintenance</b> .....	<b>6</b>
Main Unit .....	6
Speakers and Subwoofer .....	6
Remote Control .....	6
Handling and Cleaning Discs / Disc Lens .....	7
Cables and Plugs .....	7
<b>Setting up the System</b> .....	<b>8</b>
Connecting Speakers / Subwoofer .....	8
Connecting the Main Unit .....	9
Inserting Battery into the Remote Control .....	9
Wall-mounting the Speakers (Optional) .....	9
Additional Connections (Optional) .....	10
<b>Basic Operations</b> .....	<b>10</b>
Setting the Clock .....	10
Loading Discs .....	11
Playback .....	11
Adjusting Volume .....	11
Repeat Playback .....	12
Random Playback .....	12
Adjusting Sound Effects .....	12
Adjusting Equalizer Effects .....	13
Sleep Timer .....	13
<b>Tuner</b> .....	<b>13</b>
Auto / Manual Tuning .....	13
Preset Memory .....	14
Mono and Stereo .....	14
RDS Operation (European Models Only) .....	14
<b>Troubleshooting</b> .....	<b>15</b>
<b>Specifications</b> .....	<b>16</b>
<b>About Oregon Scientific</b> .....	<b>17</b>
<b>Copyright</b> .....	<b>17</b>
<b>FCC Statement</b> .....	<b>17</b>
Declaration of Conformity .....	17
<b>EC-Declaration of Conformity</b> .....	<b>18</b>

## INTRODUCTION

Thank you for selecting the Oregon Scientific™ Music Element 2.1 CD Micro System HMS388 as your personal product of choice. The sleek, slimline CD Micro System features a digital amplifier, and includes 2 satellite speakers and a subwoofer that delivers crisp, clear audio via flat panel speaker technology powered by NXT\* SurfaceSound®, delivering total power output of 55 watts.

The system supports playback on MP3, WMA, CDDA, CD-R and CD-RW discs and features adjustable sound and equalizer effects. The sleek metallic charcoal main unit and slim speakers is an attractive, yet unobtrusive centrepiece to any entertainment room.

Other features include:

- 7 equalizer effects: Rock, Jazz, Concert, Club, Pop, Classic and Dance
- Adjustable bass and treble sound effects
- AM / FM digital tuner with 40 preset radio stations (RDS message available on European models only)
- Digital clock
- Bright VFD (Vacuum Fluorescent Display) with LED indicators
- 25W subwoofer with speaker driver
- Wall-mount units for speakers
- Ultra slim remote control with metal tablet buttons

## GETTING STARTED

### UNPACKING

When you unpack your Music Element 2.1 CD Micro System, make sure to keep all the packing materials in a safe place, in case you need to later return it for servicing.

In this box you will find:

- Main CD player unit
- 2 NXT\* satellite speakers with speaker cable wire attached
- 1 subwoofer with wire attached
- Power cord
- AM loop antenna
- FM pigtail antenna
- 2 wall-mount units
- 8 screws for speaker wall-mount units
- Allen key
- Remote control with 1 CR2025 battery cell
- Lint-free cloth
- User manual
- Quick start guide
- Warranty card

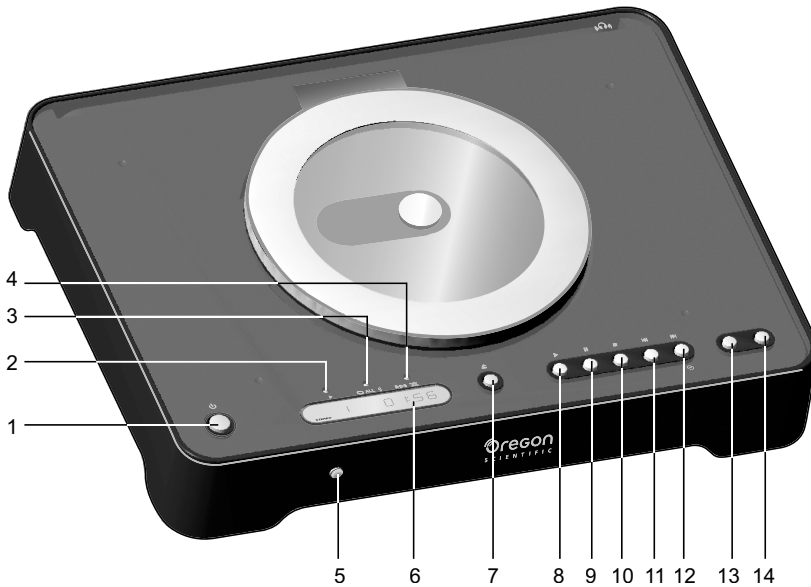
**NOTE** Please observe the local regulations regarding the disposal of packing materials, dead batteries and old equipment.

**NOTE** This equipment has been designed and manufactured to meet international safety standards but, like any electrical equipment, care must be taken if you are to obtain the best results and safety is to be assured.

## PRODUCT OVERVIEW

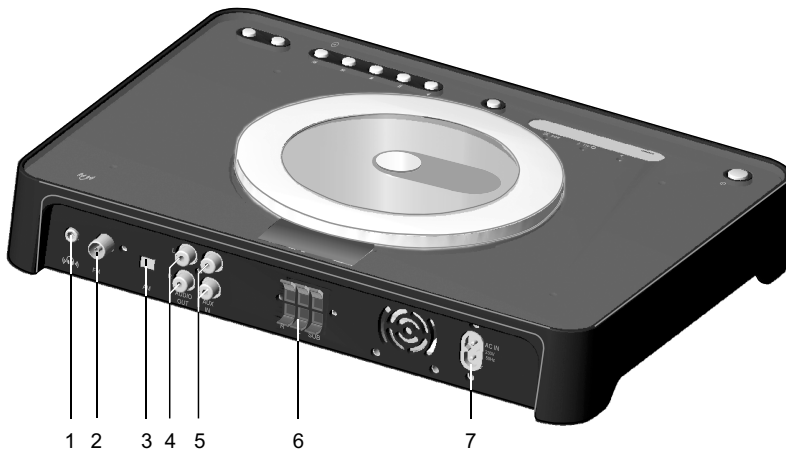
### CD PLAYER

#### FRONT VIEW / TOP VIEW



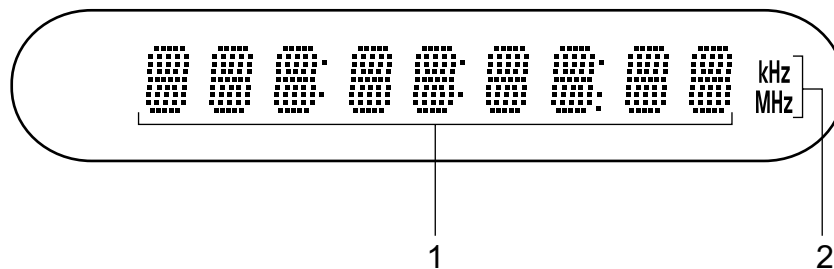
1. Standby button
2. Play LED indicator
3. Repeat all / Repeat 1 LED indicator
4. RDS / Random LED indicator
5. Infrared sensor
6. VFD display
7. Disc lid open / close button
8. Play button
9. Pause button
10. Stop button
11. Previous button
12. Next / Clock set button
13. Button for decreasing volume / decreasing clock hour or minutes in clock mode
14. Button for increasing volume / increasing clock hour or minutes in clock mode

#### BACK VIEW



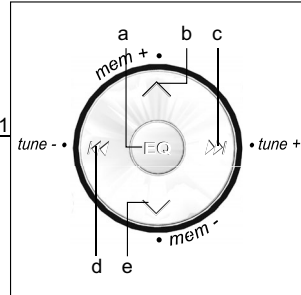
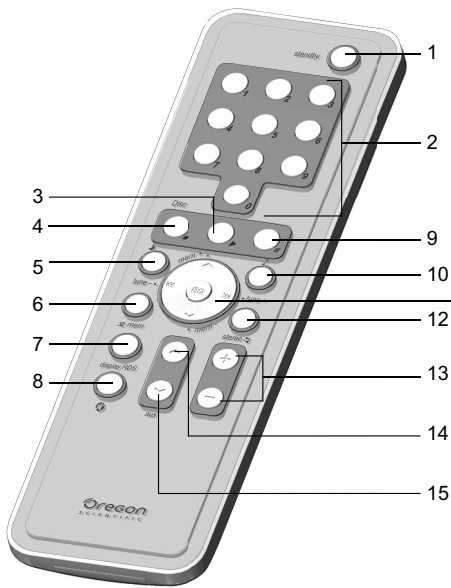
1. Earphone jack
2. FM antenna jack
3. AM antenna jack
4. Audio out jack
5. Aux in jack
6. Speaker wire connectors (R, L, SUB)
7. AC-IN jack

#### VFD DISPLAY



1. Full segment (shows track no., track time, clock, preset radio station)
2. AM (kHz) / FM (MHz)

## REMOTE CONTROL



1. Standby
2. Numeric keypad
3. Play
4. Stop
5. Sleep timer
6. Random / Mem
7. Display / RDS
8. Mute / Unmute
9. Pause
10. Sound effects
11. Directional controller
  - a. EQ
  - b. mem+
  - c. tune+ / next
  - d. tune- / previous
  - e. mem-
12. Stereo / Repeat all / Repeat 1
13. Increase / Decrease volume and clock hours / minutes
14. AM / FM
15. Aux

## NXT\* SATELLITE SPEAKERS AND SUBWOOFER

FRONT VIEW



BACK VIEW



FRONT VIEW



## MAINTENANCE

### MAIN UNIT

- Stains on the unit should be wiped off with a soft, lint-free cloth. If the unit is heavily stained, wipe it with a cloth soaked in water-diluted neutral detergent and wrung well, then wipe clean. Never use alcohol, solvent, chemical, paint thinner or benzene to clean the unit. Remember to unplug the unit from any electrical socket first before cleaning.
- Keep your player in a dry, well-ventilated place to prevent it from molding. Do not use or store the unit in locations that may adversely affect the product such as rain, snow, moisture, dust or desert.
- Do not subject the unit to extreme impact, shock or fluctuations in humidity.
- Do not forcefully open and close the disc lid by hand as this may damage the lid.
- The unit should not be exposed to dripping or splashing and no objects filled with liquids, such as vases, should be placed on the unit.
- Do not leave the unit exposed to direct sunlight for long periods. This may deform or discolour the cabinet and may cause malfunction.
- Keep this unit away from strong magnetic fields and away from a TV or tuner. Exposure to magnetic fields may damage the unit's internal circuitry and distort the TV picture or cause noisy radio reception.
- This system operates with a laser. It must only be opened by a qualified technician.
- Disconnect the system from the power source before performing any maintenance. Do not make any changes or modifications to the unit or tamper with internal components. Unauthorized changes may void your right to use the product and invalidate the warranty. Any repair or internal adjustment should be made only by a trained technician.
- If any electronic circuitry is exposed, do not, under any circumstances, touch the circuitry as there is a danger of electric shock.
- Do not insert any foreign objects or drop anything into any of the unit's openings as this could cause serious damage, possibly resulting in fire.
- The technical specifications for this product and the contents of the user manual are subject to change without notice.

### SPEAKERS AND SUBWOOFER

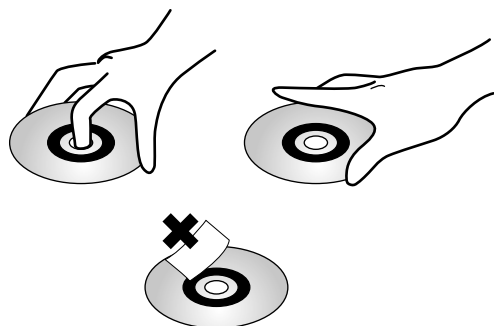
- The speakers and subwoofer should not be immersed in liquid or subjected to fluctuations in humidity. Any openings should not be exposed to dripping or splashing and be free of dirt and dust build-up.
- Avoid dropping the speakers and subwoofer or subjecting them to extreme impact or shock.
- Do not leave the speakers and subwoofer exposed to direct sunlight for long periods or place them near heat sources.
- Do not disassemble and tamper with internal components as this could damage the units and also cause electric shock resulting in personal injury.
- Do not use excessive force to press against the NXT\* speaker panels as this may hinder audio quality output and cause damage to the units.

**TIP** To minimize interference or disruptions to audio reception, make sure the speaker cable wires are not twisted or tangled up in knots.

### REMOTE CONTROL

- If the remote control will not be used for more than 1 month, remove the battery to avoid possible damage from battery leakage and corrosion.
- Discard leaky battery immediately as it may cause skin burns or other personal injuries.
- Do not drop any foreign objects into the remote casing, particularly when replacing the battery.
- Dispose of battery in the proper manner, according to provincial and local regulations.
- Any battery may leak electrolyte if mixed with a different battery type, if inserted incorrectly, if batteries are not replaced at the same time, if disposed of in fire, or if an attempt is made to charge a non-rechargeable battery.
- Do not expose the remote control sensor to direct sunlight or lighting apparatuses. Doing so may cause the unit to malfunction or discolour the cabinet.

## HANDLING AND CLEANING DISCS / DISC LENS



- Hold discs by the edges, or by one edge and the hole. Do not touch the signal surfaces.
- Do not affix labels or adhesive tapes to the label surfaces.

- Never put more than one disc on a tray or put a disc slipping out of the guide area.
- Do not scratch or damage the label. Discs rotate at high speeds inside the player. Do not use damaged, warped, or cracked discs.
- Dirty discs can cause poor sound quality. If a disc becomes dirty, wet a soft cloth in water, wring it out well, wipe the dirt away gently, and then remove any water drops with a dry cloth.



**TIP** Always keep discs clean by wiping them gently with a soft cloth from the inner edge of the disc toward the outer perimeter. Never wipe the disc in a circular motion since circular scratches are likely to occur and could cause noise during playback.

- Do not use record cleaning sprays or antistatic agents on discs. Also, never clean discs with benzene, thinner, or other volatile solvents that may cause damage to disc surface.
- Do not touch the pick-up disc lens located inside the disc compartment. To keep dust from collecting on the disc lens do not leave the compartment lid open for extended periods.
- If the disc lens gets dirty, it can cause the system to produce poor audio quality. Clean it with a soft brush, or use an air blower brush designed for camera lenses.
- Always remove the disc from the main unit before moving the system.

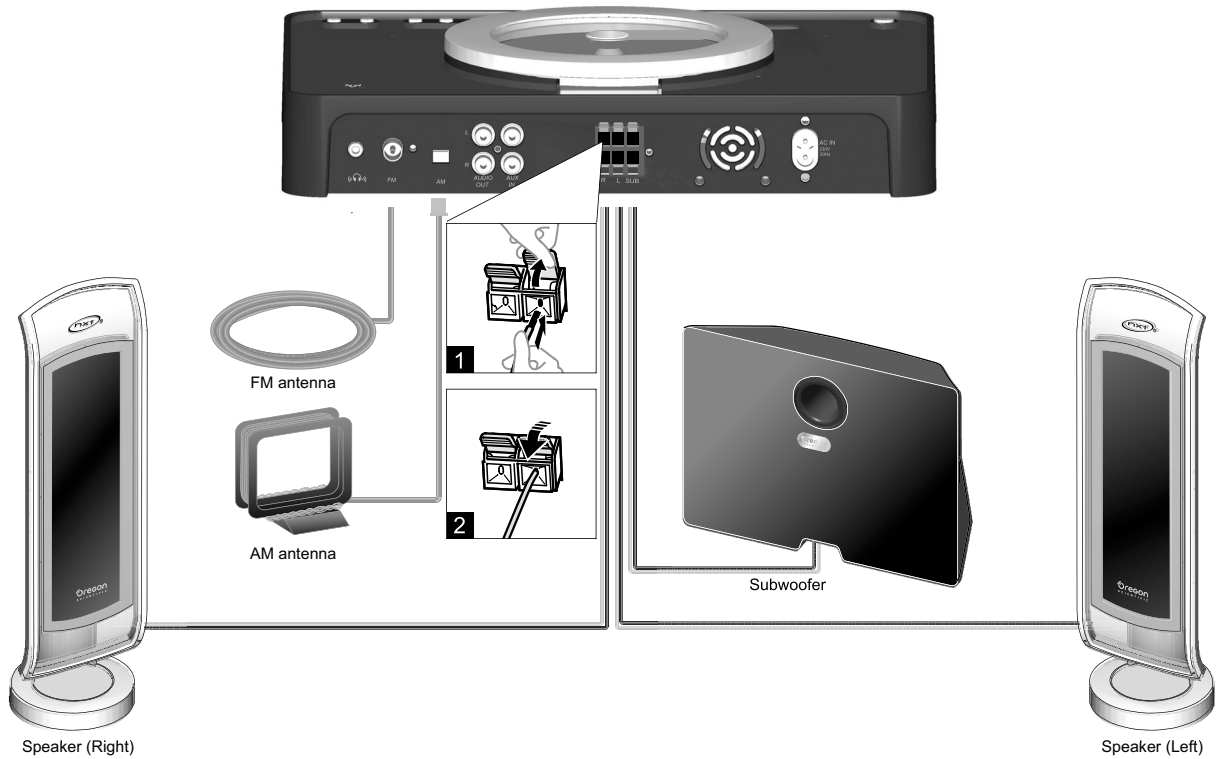
## CABLES AND PLUGS

- Do not connect the unit to the AC power supply until all other connections have been made and the AC voltage (indicated on the type plate on the back cover) has been checked.
- Do not touch the cables and plugs with wet hands, forcibly bend them in any way, or place heavy objects on top of them.
- Connect only the cables and plugs provided with the unit.
- Unplug this apparatus during lightning storms or when unused for long periods. When unplugging the cables and plugs from the wall, always pull the plug or connector, not the cord.



## SETTING UP THE SYSTEM

### CONNECTING SPEAKERS / SUBWOOFER



Your unit is supplied with light / dark grey speaker cable wires that are used to connect the speakers and subwoofer to the main CD player unit's labelled "R" (right speaker), "L" (left speaker) and "SUB" (subwoofer).

1. Push up the corresponding speaker connectors' light / dark grey tabs on the main CD player unit.
2. Insert the light / dark grey speaker cable wires into the respective light / dark grey speaker connectors.

**NOTE** Ensure that the colours of the speaker cable wires match with the colours of the main unit's speaker connectors. That is, the light-grey speaker cable wire should be connected only to the light-grey terminals and the dark-grey speaker cable wire connected to the dark-grey terminals.

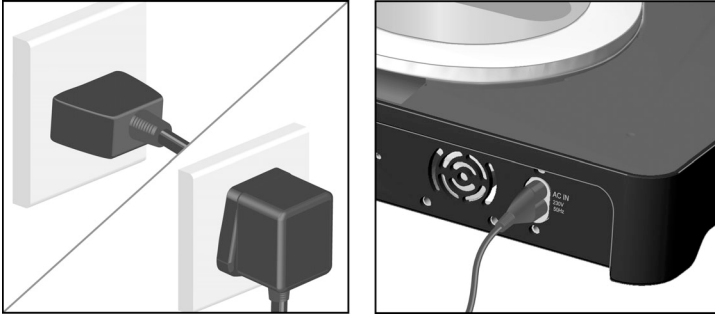
**NOTE** Never short-circuit light / dark grey speaker cable wires or reverse connections. Incorrect connection can damage the speakers and subwoofer.

3. For the unit to be able to receive AM / FM radio reception, simply connect the AM loop antenna and FM pigtail antenna to their respective AM / FM antenna jacks at the back of the player.

**NOTE** A blue translucent sheet protects the aluminium areas of the satellite speakers from scratching. Peel off the sheet to operate.

**NOTE** Use only the speakers and subwoofer that is supplied with this unit. Using speakers or subwoofers of other types or brands may short circuit or damage the unit.

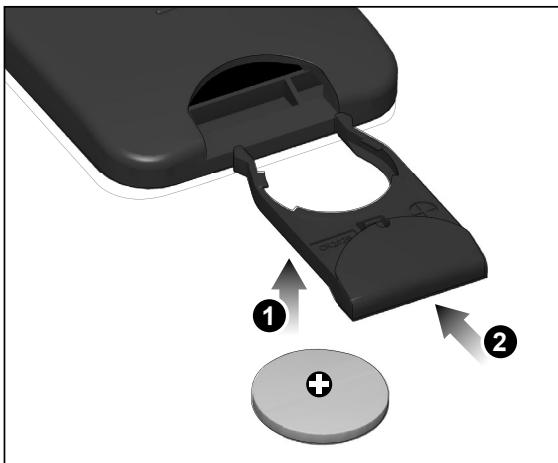
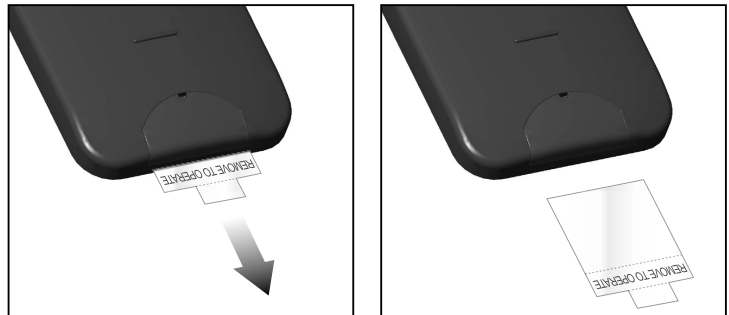
## CONNECTING THE MAIN UNIT



Connect one end of the main unit's cable into the AC IN jack and plug the other end of the cable into a standard 2-wire or 3-wire power outlet or power strip.

## INSERTING BATTERY INTO THE REMOTE CONTROL

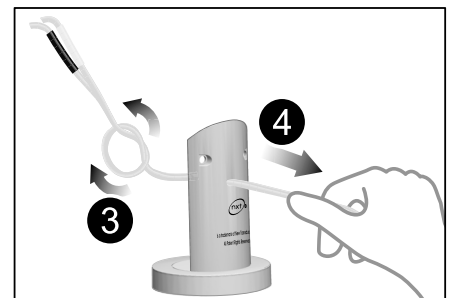
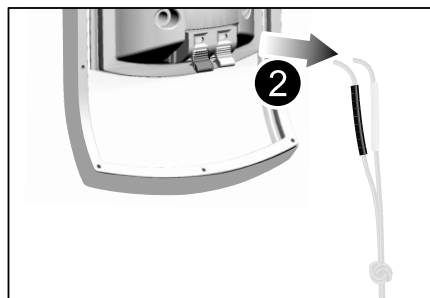
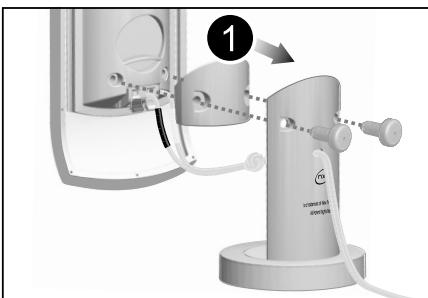
With a CR2025 battery cell already installed, the supplied remote control can be used to control the system's operations once the system is connected. Simply pullout and remove the plastic strip that is wedged in the battery compartment and point the remote control toward the main unit's infrared sensor to operate.

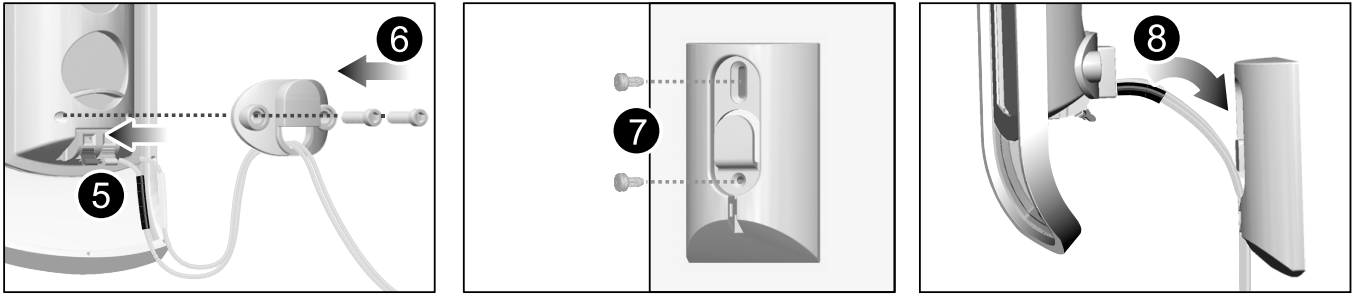


If battery power becomes depleted, install a new battery into the remote control as follows:

1. Insert a blunt object such as a ballpoint pen into the small hole of the battery compartment at the back of the remote control and gently push out until the compartment can be removed from the device with your hands.
2. Insert a new battery cell into the battery compartment's clip by matching the "+" and "-" polarity. The "+" of the battery should be facing upward.
3. Insert the battery compartment back into the remote control until it is firmly positioned.
4. When using the remote control, point it at the sensor on the front panel of the system.

## WALL-MOUNTING THE SPEAKERS (OPTIONAL)





1. Detach the speaker stand from its support housing using the allen key (provided).
2. Pull out the light / dark gray speaker wire from the speaker wire terminals.
3. Untie the speaker wire knot.
4. Pull the wire out from the speaker stand.
5. Insert the speaker wire through the wall-mount hole and re-attach to the corresponding color speaker terminals.
6. Screw the flat wall-mount to the back of the speaker.
7. Screw the wall-mount bracket into the wall. Be sure to screw into a solid surface.
8. Attach the speaker to the wall mount bracket.

**TIP** Each speaker should ideally be mounted approx. 0.9 meters (3 feet) above ear level to achieve an optimum listening experience.

#### ADDITIONAL CONNECTIONS (OPTIONAL)

##### AUXILIARY

At the back of the unit are Aux (Auxiliary) in / Audio out jacks, allowing for connections to additional audio systems or speakers. Simply connect the appropriate cable wires to the jacks of the audio system. Press the remote control aux button. "AUX" appears on the VFD. Operate the unit and additional devices as normal.

**NOTE** Aux feature can be controlled from the remote control only, not from the unit itself.

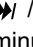
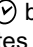
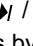
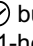


##### EARPHONES

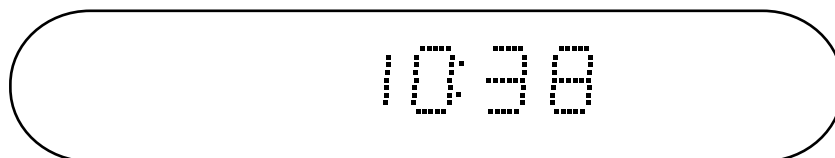
Similarly, while the slim speakers and subwoofer provide crystal clear audio playback, you may optionally connect earphones to the earphone jack at the back of the unit and listen to audio at your own convenience and without disturbing others.

#### BASIC OPERATIONS

**NOTE** References to "CD" or "disc" includes both audio CDs and MP3 / WMA CDs unless otherwise noted.

##### SETTING THE CLOCK

1. To adjust the system clock, power off the unit so that it is in standby mode.
2. Press the  /  button on the unit. The clock minutes will flash on the unit's VFD. Press the - / + button on the unit to adjust the minutes by 1-minute increments. Press and hold to adjust more quickly.
3. Press the  /  button on the unit again. The clock hours will flash on the VFD. Press the - / + button on the unit to adjust the minutes by 1-hour increments. Press and hold to adjust more quickly.
4. Press the  /  button to confirm the desired clock setting.

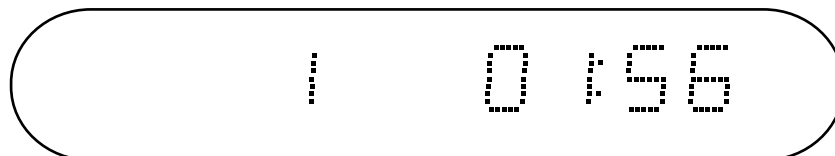


**NOTE** This unit operates on a 24-hour clock only. A 12-hour clock with AM / PM display is not available with this unit.

**NOTE** If the unit is idle for 30 seconds (that is, no buttons are pressed on the unit or remote control), the clock will return to the previously set time. If you were in the middle of setting the clock and you decide to quit, press any button on the unit or remote control.

### LOADING DISCS

1. Press the **⏻** button to turn the system on.
2. Press the **⏮** button on the unit to open the CD lid and insert or replace a disc into the CD tray.
3. Press the area near the centre hole of the disc until it clicks into position, press the **⏮** button to close the lid. The system will automatically show the CD status on the VFD, which includes total number of tracks and play time of the disc just inserted.



### PLAYBACK

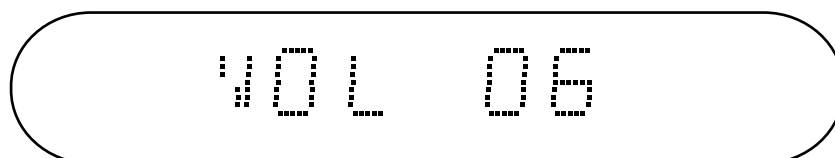
1. If the CD does not start playing automatically, press the **▶** button on the unit or remote control to start playback.
2. When a particular track of the inserted CD is playing, the corresponding track number and track time will show on the unit's VFD.
3. Press the **⏸** button on the unit or remote control to pause playback. The Play LED indicator and track number and track time shown on the VFD will flash. To resume playback, press the **▶** or **⏸** button.
4. To select another track during playback, press the **⏮** or **⏭** button on the unit or the **⏮ / tune+** or **⏭ / tune-** button on the remote control to select the desired track. The selected track will begin playing and its corresponding track number appears on the unit's VFD.
5. To fast-forward or rewind to a different location within the currently played track, press and hold the **⏮** or **⏭** button on the unit or **⏮ / tune+** or **⏭ / tune-** button on the remote control.
6. Press the **■** button on the unit or on the remote control at any time to stop playback.

**TIP** While playing audio CDs, press the **display / RDS** button once to show track remaining time and press again to show accumulated CD playback time. Press the **display / RDS** button a third time shows disc remaining time, and a fourth time to view the system digital clock on the unit's VFD. While playing MP3 / WMA CDs, track time is shown on the VFD. Press the **display / RDS** button to toggle between track time and the digital clock.

**NOTE** MP3 / WMA CDs require a longer time to access tracks than audio CDs due to the nature in which MP3 / WMA files are stored on the CD and also by the number of directories, if any. The more files and directories, the longer the access time will be.

### ADJUSTING VOLUME

1. Press the **- / +** button on the unit or remote control to decrease / increase volume. Press and hold to decrease / increase more rapidly. Maximum volume level is 40 and default level is 15.



2. Press the **⏻** button to mute the sound. The VFD automatically toggles between "MUTE" and the track time displayed. Press the **⏻** button again or press the **Volume - / +** button on the unit or remote control to unmute.

## REPEAT PLAYBACK

1. Use the remote control and press the **↺** button once to select the Repeat All track function. The unit's **↺ ALL** LED indicator will light up orange and playback all tracks repeatedly in order from the first track to the last. If Random playback function is turned on, tracks will be played back in random order.
2. Press the **↺** button again to select the Repeat 1 function. The **↺ ALL** LED indicator will flash orange. The unit will playback the same track repeatedly.
3. Press the **↺** button a third time to disable the repeat function. The **↺ ALL** LED indicator will no longer light up or flash.

**NOTE** The Repeat playback feature can be controlled from the remote control only, not from the unit itself.

## RANDOM PLAYBACK

1. If the unit is playing tracks, press the **■** button on the unit or on the remote control to stop playback.
2. Use the remote control and press the **↺** button once to begin random playback of all tracks. The **RDS / ↺** LED indicator on the unit's VFD will light up and continuously flash orange.
3. Press the **■** button on the unit or on the remote control to stop playback. This will clear random playback and the unit will return to normal playback.

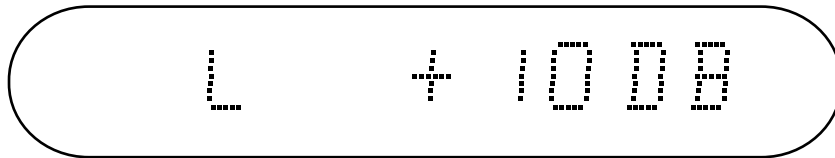
**NOTE** The Random playback feature can be controlled from the remote control only, not from the unit itself.

## ADJUSTING SOUND EFFECTS

Using the **EQ** on the remote control and the **- / +** buttons on unit and remote control, you may individually adjust the left / right speaker and subwoofer volume, as well as bass and treble sound effects.

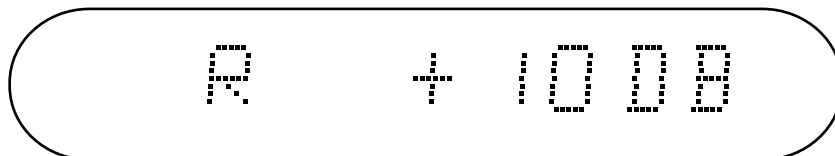
### LEFT SPEAKER

Adjust the left speaker volume level by pressing the **EQ** button on the remote control until "L" and the decibel number appears on the VFD. Press the **- / +** buttons on the unit or remote control to adjust the left speaker volume.



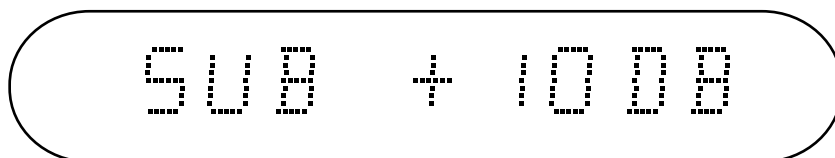
### RIGHT SPEAKER

Adjust the right speaker volume level by pressing the **EQ** button on the remote control until "R" and the decibel number appears on the VFD. Press the **- / +** buttons on the unit or remote control to adjust the right speaker volume.



### SUBWOOFER

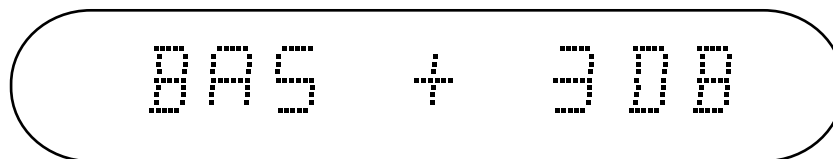
Adjust the subwoofer volume level by pressing the **EQ** button on the remote control until "SUB" and the decibel number appears on the VFD. Press the **- / +** buttons on the unit or remote control to adjust the subwoofer volume.



**NOTE** The range of speaker and subwoofer volume levels is -10dB ~ +10dB.

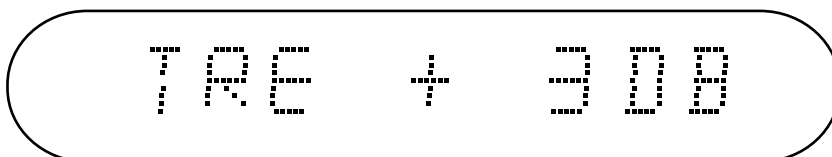
## BASS

Adjust the bass volume level by pressing the **EQ** button on the remote control until "BAS" and the decibel number appears on the VFD. Press the **- / +** buttons on the unit or remote control to adjust the bass level.



## TREBLE

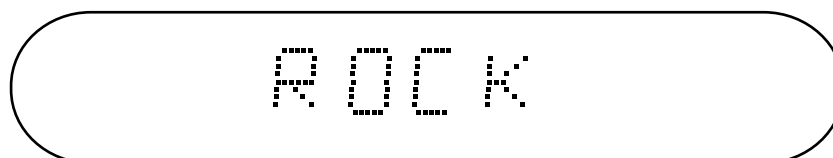
Adjust the treble volume level by pressing the **EQ** button on the remote control until "TRE" and the decibel number appears on the VFD. Press the **- / +** buttons on the unit or remote control to adjust the treble level.



**NOTE** The range of bass and treble levels is -5dB ~ +5dB.

## ADJUSTING EQUALIZER EFFECTS

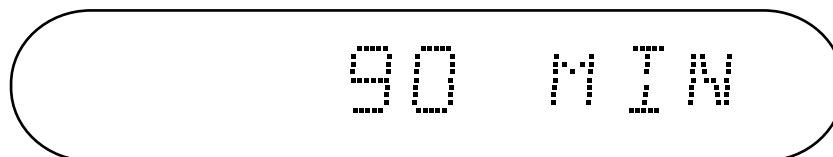
The unit provides 7 different equalizer sound options to match the type of track being played back: Rock, Jazz, Concert, Club, Pop, Classic and Dance. Simply press the **♪** button repeatedly until the desired effect is chosen.



## SLEEP TIMER

If the Sleep Timer function is activated, the CD Micro system can automatically turn itself off anytime from 10 to 120 minutes.

1. Turn the system on and press the **☾** button on the remote control. The Sleep Timer shows 120 minutes on the unit's VFD.
2. Press the **☾** button repeatedly to decrease the time by 10-minute increments until the desired time is reached. The Sleep Timer will begin counting down from the set time until zero, when the system then turns off automatically. During this countdown period, press the **☾** button once to view the remaining time.



3. To turn off or cancel the Sleep Timer, press the **☾** button repeatedly until the VFD displays "OFF".

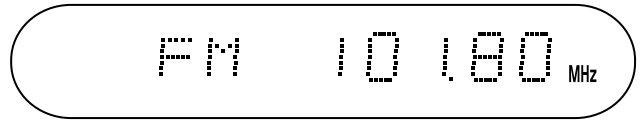
**NOTE** The Sleep Timer feature can be controlled from the remote control only, not from the unit itself.

## TUNER

### AUTO / MANUAL TUNING

1. Press the **⊕** button to turn the system on. Select the Tuner function by pressing the **AM / FM** button on the remote control. If a CD was being played back, it will stop spinning.
2. To manually tune radio stations, press the **⏪** or **⏩** button repeatedly on the unit or **tune+** or **tune-** button on the remote control to search for the desired frequency.

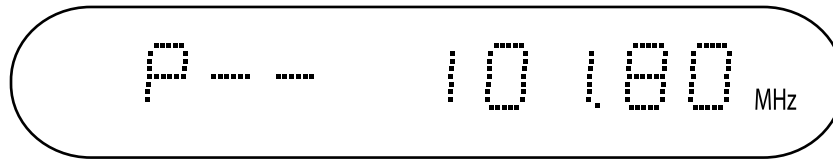
- For auto-tuning, press and hold the **⏪** or **⏩** button on the unit or **tune+** or **tune-** button until the system begins to search for a station of sufficient reception strength, in which auto tuning will then stop (see following section to store preset stations). Repeat to automatically tune other stations. Radio stations with weak reception are skipped automatically during auto-tuning.



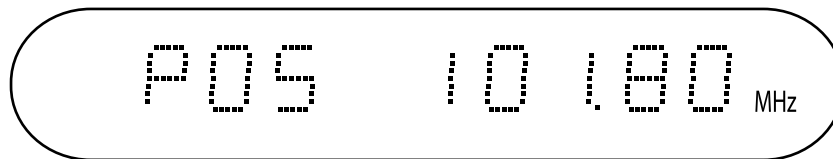
## PRESET MEMORY

### STORING PRESET STATIONS

- Once a station has been manually or automatically tuned, press the **mem** button on the remote control to store into memory. The station number appears on the VFD as does a flashing "P--".



- Press a number button on the remote control keypad to select the desired preset station number, for example, 5. Press the **mem** button again. The desired station should be preset successfully with "P--" replaced by "P05". Repeat to store other tuned stations.



### SELECTING PRESET STATIONS

- Select the band AM or FM with the **AM / FM** button on the remote control.
- Press the preset station number using the remote control keypad to choose the memory station directly or press the **mem-** or **mem+** button on the remote control until the required preset memory number appears.

## MONO AND STEREO

Mono is sound reproduction using a single channel whereas stereo is sound reproduction that uses two or more channels to give the audio a sense of depth and better sound quality. Thus, FM stereo is preferred over FM mono unless FM stereo reception strength is too weak.

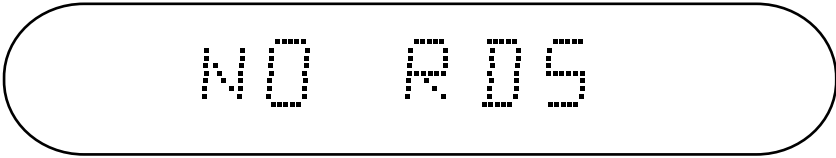
- Adjust the FM pigtail antenna to achieve the best reception possible for the desired FM station.
- In cases where interference is causing poor FM stereo reception, switch to mono reception by pressing the **stereo** button on the remote control. The FM station plays back in mono mode and "FM mono" appears on the VFD instead of "FM stereo".

**NOTE** Toggling between FM stereo and FM mono can be controlled from the remote control only, not from the unit itself.

## RDS OPERATION (EUROPEAN MODELS ONLY)

Available only in European models of the CD Micro System, RDS stands for Radio Data System; the PS and PTY features of RDS are available for this unit. It is not intended for automatic turning purposes. The PS name is an 8-character alphanumeric label transmitted by the broadcaster to identify to the listener the name of the tuned program service. The PTY name is an 8-character alphanumeric label transmitted by the broadcaster to identify to the listener the name of the tuned program type, such as current affairs, science, or popular music.

While tuning into radio frequencies, the unit will automatically check whether any RDS stations exist or are found. If none exist or can be found, the RDS LED indicator on the unit front panel will turn off. Pressing the **display / RDS** button on the remote control will show the message, "NO RDS", on the VFD. If any RDS stations exist or are found, the RDS LED indicator will light up orange and "RDS" will appear on the VFD.



NO RDS


If an RDS station is tuned, the VFD will read the station name (PS) approx. 3 seconds after the radio frequency is automatically displayed. During that time, press the **display / RDS** button on the remote control continually and the VFD will read the following services: Programme Type (PTY)----Frequency----Station Name (PS).

**NOTE** RDS is available only for the Europe. When using the unit in North America or other markets that do not support RDS, the RDS feature will not work if the remote control **display / RDS** button is pressed; the message, "NO RDS", will show on the VFD.

## TROUBLESHOOTING

Use this troubleshooting guide to help remedy any difficulties you may be experiencing while using the CD Micro System. Should any problem persist after you have checked these symptoms, consult your nearest Oregon Scientific dealer.

### **Why is there no power coming from the unit? And when there is power why is it switching off automatically?**

Ensure the AC power cord is connected to wall outlet and all cables and speaker cable wires are properly connected. If the player is not used, i.e., no button is pressed for 30 minutes, it automatically switches to standby mode (Auto Power Off). Press the  button to switch the player on again. The plugs and jacks may be dirty, affecting the connections. Ensure the cables and plugs are cleaned and properly connected and firmly established.

### **Why is the unit not playing CDs?**

The disc may not be secured in place. Take the disc out and re-insert if necessary. If the disc is dirty, clean it with a soft, lint-free cloth and try playing the disc again. If it still does not play, than may mean it is scratched or is not of the format that is compatible with the player. There may be excess moisture condensed inside the player's lens. Leave the player turned off for a few hours until moisture evaporates, then turn on.

### **How come the buttons on the main unit and / or remote control do not activate the functions they control?**

The player may not be operating properly due to lightning, interference, static electricity or some other external factors. Turn the unit off, disconnect the power plug and then re-connect. Try changing the battery cell on the remote control. Your unit has built-in protection against overload or overheating. If the unit switches off in this case, wait a few minutes and power on again. If the buttons on the unit and remote control still do not activate the functions they control even when corrective actions are taken, the buttons may be damaged or there may be some other cause of malfunction. Take the unit to a qualified Oregon Scientific dealer for servicing.

### **Why do the speakers and subwoofer not power on at all?**

Ensure the power cord is firmly plugged into the power outlet. On rare occasions, the speakers may not operate due to data signal interference or static electricity. Turn the power off and unplug the unit from the power outlet briefly, and then plug it in again so it will reset itself and turn the speaker on.

### **How come there is hardly any sound or no sound coming from one or any speakers or subwoofer at all?**

Check to ensure the power is on and increase the volume. Make sure the speakers are connected properly and that the unit is not on mute. Check to see that the light / dark grey speaker and subwoofer cable wires are matching their appropriate light / dark grey terminals. Data signal interference or static electricity may disrupt the signal reception. Switch the unit off, wait a few seconds, and turn the unit back on. The speaker cable wires may be twisted or tangled up in knots, causing interference or disruptions / distortion to audio reception. Untangle or untwist the cable wires should allow for clearer audio reception.

### **How do I eliminate the severe hum, distortion or noise that is coming from the speakers and subwoofer?**

The cables and jacks may be dirty, affecting the connections and thus causing sound distortion. Wipe clean. In some cases, volume might not be appropriately adjusted. Adjusting the volume will help to clear any hum or distortion. There may be excess moisture condensed inside the speakers or that might affect their ability to produce audio, especially after turning on heating in the room, if the room is damp, or if the speakers are brought directly from a cold to a warm place. In this case, leave the system off for a few hours until moisture evaporates, unplug the AC power cord and then plug it in again.



**How come playback does not start when the ► button is pressed?**

Make sure the disc (single-sided) is loaded correctly with the title label facing up and that the player is set to the proper source mode. Check to see that all cable wires are properly connected.

**Why is the player exhibiting severe hum or noise during radio playback?**

Radio signal reception may be weak. Try manually tuning the station until a stronger reception is found. In some cases, you may need to move the player or AM / FM antenna to a different location in order to receive better signals.

**How come the radio is not playing a saved station?**

A preset station may not have been saved properly if you were manually tuning stations. Try again and ensure that the station chosen exhibits a strong reception signal.

**Why is the remote control not working?**

Check the battery is loaded correctly with the correct polarity. If it is low on power or exhausted, replace the battery. Make sure the remote control is not operating outside the range of 7 meters (23 feet), and that no obstacles stand between the remote control and the unit that may affect wireless reception.

**SPECIFICATIONS**

TYPE	DESCRIPTION
<b>Dimensions (W x H x D)</b>	
CD player main unit	318 x 50 x 239 mm (12.5 x 2 x 9.4 inches)
NXT* satellite speakers	96 x 324.6 x 35 mm (without stand) (3.8 x 12.8 x 1.4 inches) 96 x 354.8 x 90 mm (with stand) (3.8 x 14 x 3.5 inches)
Subwoofer	318 x 240 x 125 mm (12.5 x 9.4 x 5 inches)
Remote control	48 x 162 x 12.4 mm (2 x 6.4 x 0.5 inches)
<b>Audio Power Output</b>	
Left and right channels	15W x 2 (RMS)
Subwoofer	25W (RMS)
Total	55W in RMS
Speaker impedance	4 ohms
Subwoofer impedance	8 ohms
Distortion	0.5% THD on left and right channel 10% THD on subwoofer
Dynamic range	100Hz to 20kHz
Input impedance	47K
Input sensitivity	400mV
<b>Tuner</b>	
Presets	40
Auto-tuning	Yes
Clock	Local time display
AM tuning range	522kHz to 1620kHz (for Europe and Australia) or 530kHz to 1710kHz (for U.S.)
FM tuning range	87.5MHz to 108MHz (for U.S., Europe and Australia)
<b>Terminals</b>	
Audio	Audio left-right RCA line-out
	Speaker left-right line-out and subwoofer out
	Headphone jack (3.5 mm)
	AC power in
	FM aerial in, AM loop
Power supply	AC230V / 50Hz (for Europe and Australia) or AC120V / 60Hz (for U.S.)

## ABOUT OREGON SCIENTIFIC

Visit our website ([www.oregonscientific.com](http://www.oregonscientific.com)) to learn more about Oregon Scientific products such as digital cameras; MP3 players; children's electronic learning products and games; projection clocks; health and fitness gear; weather stations; and digital and conference phones. The website also includes contact information for our customer care department in case you need to reach us, as well as frequently asked questions and customer downloads.

We hope you will find all the information you need on our website, however if you're in the US and would like to contact the Oregon Scientific Customer Care department directly, please visit [www2.oregonscientific.com/service/support](http://www2.oregonscientific.com/service/support) OR Call 1-800-853-8883. For international inquiries, please visit [www2.oregonscientific.com/about/international/default.asp](http://www2.oregonscientific.com/about/international/default.asp)

## COPYRIGHT

\*  and NXT are trademarks of New Transducers Limited.

## FCC STATEMENT

This device complies with Part 15 of the FCC Rules. Operation is subject to the following two conditions: (1) This device may not cause harmful interference, and (2) This device must accept any interference received, including interference that may cause undesired operation.

**WARNING** Changes or modifications not expressly approved by the party responsible for compliance could void the user's authority to operate the equipment.

**NOTE** This equipment has been tested and found to comply with the limits for a Class B digital device, pursuant to Part 15 of the FCC Rules. These limits are designed to provide reasonable protection against harmful interference in a residential installation.

This equipment generates, uses and can radiate radio frequency energy and, if not installed and used in accordance with the instructions, may cause harmful interference to radio communications. However, there is no guarantee that interference will not occur in a particular installation. If this equipment does cause harmful interference to radio or television reception, which can be determined by turning the equipment off and on, the user is encouraged to try to correct the interference by one or more of the following measures:

- Reorient or relocate the receiving antenna.
- Increase the separation between the equipment and receiver.
- Connect the equipment into an outlet on a circuit different from that to which the receiver is connected.
- Consult the dealer or an experienced radio / TV technician for help.

## DECLARATION OF CONFORMITY

The following information is not to be used as contact for support or sales. Please call our customer service number (listed on our website at [www.oregonscientific.com](http://www.oregonscientific.com)), or on the warranty card for this product) for all inquiries instead.

### We

Name: Oregon Scientific, Inc.  
 Address: 19861 SW 95th Ave., Tualatin, Oregon 97062 USA  
 Telephone No.: 1-800-853-8883


is in conformity with Part 15 of the FCC Rules. Operation is subject to the following two conditions: 1) This device may not cause harmful interference. 2) This device must accept any interference received, including interference that may cause undesired operation.

**EC-DECLARATION OF CONFORMITY**

Hereby, Oregon Scientific, declares that this Music Element 2.1 CD Micro System model HMS388 is in compliance with the essential requirements and other relevant provisions of EMC directive 89 / 336 / CE and LVD directive 73 / 23 / EC. A copy of the signed and dated Declaration of Conformity is available on request via our Oregon Scientific Customer Service.



**COUNTRIES RTTE APPROVAL COMPLIED**

All EC countries, Switzerland 

and Norway 