

Compliance (Summary) Report**Report No.: GZES130200104401****Date: 2013-06-05**

Applicant: HoMedics Group Ltd.
HoMedics House, Somerhill Business Park, Five Oak Green Road, Tonbridge, Kent
TN11 0GP England

Manufacturer / Factory: Zhang Zhou Easepal Industry Co., Ltd.
228 Jiaosong Road, Taiwan Investment Zone, Zhangzhou, Fujian, China

Testing location/address: SGS-CSTC Standards Technical Services Co., Ltd. - E&E Lab Guangzhou
198 Kezhu Road, Sciencetech Park, Guangzhou Economic & Technology Development
District, Guangzhou, Guangdong, China 510663

The standards: BS EN / EN 60335-1: 2002 + A11: 2004 + A1: 2004 + A12: 2006 + A2: 2006 + A13:
2008 + A14: 2010 + A15: 2011
BS EN / EN 60335-2-32: 2003 + A1: 2008
BS EN / EN 62233: 2008

Test item description: Champneys Footspa

Trade Mark: **CHAMPNEYS** for CH-FS110-GB, 1471090
ELLE MACPHERSON
THE BODY™ for ELM-FS100-GB, ELMFS-150-EU

Test object / Model : CH-FS110-GB, ELM-FS100-GB, ELMFS-150-EU, 1471090

Ratings: 220 – 240 V, 50 / 60 Hz, Class II
CH-FS110-GB, 1471090: 35 W
ELM-FS100-GB, ELMFS-150-EU: 33 W

Test result : In the opinion of SGS-CSTC the presented appliance was found to be in compliance
with the test specification as indicated in the details on the following pages.

Remark: PO No.: PC0001249



Nick Cui
Reviewer
E&E Safety Laboratory

Kyle Zhang
Project Engineer

Compliance (Summary) Report

Report No.: GZES130200104401

Date: 2013-06-05

Copy of marking plate

CHAMPNEYS

PO Box 5300 Nottingham NG90 1AA
SPA AT HOME LUXURY FOOTSPA
MODEL: CH-FS110-GB ITEM: 1471090
INPUT: 220-240V 50/60Hz 36W
CAUTION: CONTINUOUS OPERATION NOT
MORE THAN 30 MINS



ELLE MACPHERSON THE BODY™

LUXURY FOOTSPA
MODEL: ELM-FS100-GB
INPUT: 220-240V 50/60Hz 33W
CAUTION: CONTINUOUS OPERATION NOT
MORE THAN 30 MINS



ELLE MACPHERSON THE BODY™

LUXURY FOOTSPA
MODEL: ELMFS-150-EU
INPUT: 220-240V 50/60Hz 33W
CAUTION: CONTINUOUS OPERATION NOT
MORE THAN 30 MINS



Summary of testing:

Tests according to the following standards were carried out :

BS EN / EN 60335-1: 2002 + A11: 2004 + A1: 2004 + A12: 2006 + A2: 2006 + A13: 2008 + A14: 2010 + A15: 2011

BS EN / EN 60335-2-32: 2003 + A1: 2008

BS EN / EN 62233: 2008

The model CH-FS110-GB was subjected to full tests. The model ELM-FS100-GB was subjected to clause 10 test and construction check.

The submitted samples fulfil the requirements of the relevant standards.

Compliance (Summary) Report

Report No.: GZES130200104401

Date: 2013-06-05

Test item particulars	—
Classification of installation and use.....	Portable appliance
Supply connection.....	Non-detachable power cord fitted with plug
Operating condition.....	Continuously
Possible test case verdicts:	
- test case does not apply to the test object	N/A
- test object does meet the requirement	P (Pass)
- test object does not meet the requirement	F (Fail)
Testing	
Date of receipt of test item	2013-02-19
Date (s) of performance of tests.....	2013-02-19 to 2013-05-28
General product information:	
<p>Champneys Footspa for household and indoor use only.</p> <p>The model CH-FS110-GB and ELM-FS100-GB are identical except appearance and function are different. CH-FS110-GB has Infrared heating function and ELM-FS100-GB no Infrared heating function.</p> <p>The model ELM-FS100-GB and ELMFS-150-EU are identical except plug is different.</p> <p>ELM-FS-100-GB use BS plug, ELMFS-150-EU uses EU plug.</p> <p>The model CH-FS110-GB and 1471090 are identical except model number is different.</p>	

This document is issued by the Company subject to its General Conditions of Service printed overleaf, available on request or accessible at www.sgs.com/terms_and_conditions.htm and, for electronic format documents, subject to Terms and Conditions for Electronic Documents at www.sgs.com/terms_e-document.htm. Attention is drawn to the limitation of liability, indemnification and jurisdiction issues defined therein. Any holder of this document is advised that information contained hereon reflects the Company's findings at the time of its intervention only and within the limits of Client's instructions, if any. The Company's sole responsibility is to its Client and this document does not exonerate parties to a transaction from exercising all their rights and obligations under the transaction documents. This document cannot be produced except in full, without prior written approval of the Company. Any unauthorized alteration, forgery or falsification of the content or appearance of this document is unlawful and offenders may be prosecuted to the fullest extent of the law.

SGS-CSTC Standards Technical Services Co., Ltd. - E&E Lab Guangzhou

198 Kezhu Road, Sciencetech Park, Guangzhou Economic & Technology Development District,
Guangzhou, Guangdong, China 510663

Tel.: +86 20 8215 5555 Fax: +86 20 8207 5058

Compliance (Summary) Report

Report No.: GZES130200104401

Date: 2013-06-05

BS EN / EN 60335-1 and BS EN / EN 60335-2-32		
Clause	Remarks	Verdict
7. Marking and instructions		P
8. Protection against access to live parts		P
9. Starting of motor-powered appliances		N/A
10. Power input and current	(see appended table)	P
11. Heating	(see appended table)	P
13. Leakage current and electric strength at operating temperature	(see appended table)	P
14. Transient overvoltages		N/A
15. Moisture resistance	(see appended table)	P
16. Leakage current and electric strength	(see appended table)	P
17. Overload protection of transformer and associated circuits	(see appended table)	P
18. Endurance		N/A
19. Abnormal operation	(see appended table)	P
20. Stability and mechanical hazards		P
21. Mechanical strength		P
22. Construction		P
23. Internal wiring		P
24. Components	(see appended table)	P
25. Supply connection and external flexible cords		P
26. Terminals for external conductors		P
27. Provisions for earthing		N/A
28. Screws and connections		P
29. Clearances, creepage distances and solid insulation	(see appended table)	P
30. Tracking to Resistance to heat, fire		P
31. Resistance to rusting		P
32. Radiation, toxicity and similar hazards		P
Annex A Routine tests		N/A
Annex B Appliances powered by rechargeable batteries		N/A
Annex C Ageing test on motors		N/A
Annex D Thermal motor protectors		N/A
Annex E Needle flame test		P
Annex F Capacitors		N/A
Annex G Safety isolating transformers		N/A
Annex H Switches		N/A
Annex I Motors having basic insulation that is inadequate for the rated voltage of the appliance		N/A

This document is issued by the Company subject to its General Conditions of Service printed overleaf, available on request or accessible at www.sgs.com/terms_and_conditions.htm and, for electronic format documents, subject to Terms and Conditions for Electronic Documents at www.sgs.com/terms_e-document.htm. Attention is drawn to the limitation of liability, indemnification and jurisdiction issues defined therein. Any holder of this document is advised that information contained hereon reflects the Company's findings at the time of its intervention only and within the limits of Client's instructions, if any. The Company's sole responsibility is to its Client and this document does not exonerate parties to a transaction from exercising all their rights and obligations under the transaction documents. This document cannot be produced except in full, without prior written approval of the Company. Any unauthorized alteration, forgery or falsification of the content or appearance of this document is unlawful and offenders may be prosecuted to the fullest extent of the law.

SGS-CSTC Standards Technical Services Co., Ltd. - E&E Lab Guangzhou

198 Kezhu Road, Sciencetech Park, Guangzhou Economic & Technology Development District, Guangzhou, Guangdong, China 510663

Tel.: +86 20 8215 5555 Fax: +86 20 8207 5058

Compliance (Summary) Report

Report No.: GZES130200104401

Date: 2013-06-05

Annex J Coated printed circuit boards		N/A
Annex K Overvoltage categories		P
Annex L Guidance for the measurement of clearances		P
Annex M Pollution degree		P
Annex N Proof tracking test		N/A
Annex O Selection and sequence of the tests of clause 30		P
Annex P Guidance for the application of this standard to appliances used in warm damp equable climates		N/A
Annex Q Sequence of tests for the evaluation of electronic circuits		P
Annex R Software evaluation		N/A

ANNEX EMF

	The Tested product also complies to the requirements of BS EN / EN 62233: 2008		—
	Limit 100%	Max.: 5,3 %	P

This document is issued by the Company subject to its General Conditions of Service printed overleaf, available on request or accessible at www.sgs.com/terms_and_conditions.htm and, for electronic format documents, subject to Terms and Conditions for Electronic Documents at www.sgs.com/terms_e-document.htm. Attention is drawn to the limitation of liability, indemnification and jurisdiction issues defined therein. Any holder of this document is advised that information contained hereon reflects the Company's findings at the time of its intervention only and within the limits of Client's instructions, if any. The Company's sole responsibility is to its Client and this document does not exonerate parties to a transaction from exercising all their rights and obligations under the transaction documents. This document cannot be produced except in full, without prior written approval of the Company. Any unauthorized alteration, forgery or falsification of the content or appearance of this document is unlawful and offenders may be prosecuted to the fullest extent of the law.

SGS-CSTC Standards Technical Services Co., Ltd. - E&E Lab Guangzhou

198 Kezhu Road, Sciencetech Park, Guangzhou Economic & Technology Development District,
Guangzhou, Guangdong, China 510663

Tel.: +86 20 8215 5555 Fax: +86 20 8207 5058

Compliance (Summary) Report

Report No.: GZES130200104401

Date: 2013-06-05

ANNEX 1: Data Table

10.1	TABLE: Power input deviation					P
Input deviation of/at:	P rated (W)	P measured (W)	Dp	Required Dp	Remark	
220 – 240 V / 230 V	35	34,7	-0,8%	±10%	CH-FS110-GB	
220 – 240 V / 230 V	33	29,8	-9,7%	±10%	ELM-FS100-GB	

11.8	TABLE: Heating test, thermocouples			P
	Test voltage (V).....:	1,06 x 240 V = 254,4 V		—
	Ambient (°C)	t ₁ :23,7 t ₂ : 24,2		—
Thermocouple locations		dT (K)	Max. dT (K)	
Power cord		18,4	50	
VDR		18,3	T85-25=60	
X capacitor		20,2	T100-25=75	
Inductor winding		24,7	65 (class 105) / for clause 30.1	
Transformer winding / bobbin		58,9	85 (class 130) / for clause 30.1	
Main PCB		32,4	120	
PCB for Infrared lamp		44,0	120	
Heating wire surface / container bottom enclosure		34,6	T200-25=175 / for clause 30.1	
Infrared lamp cover		47,1	for clause 30.1	
Internal wire		17,7	T105-25=80	
Vibrator motor winding / brush holder		29,6	80 (class 120) / for clause 30.1	
Pump winding / brush holder		36,8	115 (class 155) / for clause 30.1	
Knob of switch		7,6	for clause 30.1	
Control panel surface		5,5	60	
Control PCB		6,0	120	
Water temperature		42,8 °C	50 °C	
Appliance bottom cover		6,0	6,0	
Infrared lamp cover surface		34,0	50	
Test floor		6,1	65	

This document is issued by the Company subject to its General Conditions of Service printed overleaf, available on request or accessible at www.sgs.com/terms_and_conditions.htm and, for electronic format documents, subject to Terms and Conditions for Electronic Documents at www.sgs.com/terms_e-document.htm. Attention is drawn to the limitation of liability, indemnification and jurisdiction issues defined therein. Any holder of this document is advised that information contained hereon reflects the Company's findings at the time of its intervention only and within the limits of Client's instructions, if any. The Company's sole responsibility is to its Client and this document does not exonerate parties to a transaction from exercising all their rights and obligations under the transaction documents. This document cannot be produced except in full, without prior written approval of the Company. Any unauthorized alteration, forgery or falsification of the content or appearance of this document is unlawful and offenders may be prosecuted to the fullest extent of the law.

SGS-CSTC Standards Technical Services Co., Ltd. - E&E Lab Guangzhou

198 Kezhu Road, Sciencetech Park, Guangzhou Economic & Technology Development District, Guangzhou, Guangdong, China 510663

Tel.: +86 20 8215 5555 Fax: +86 20 8207 5058

Compliance (Summary) Report

Report No.: GZES130200104401

Date: 2013-06-05

13.2	TABLE: Leakage current		P
	Heating appliances: 1,15 x rated power input.....:	—	—
	Motor-operated and combined appliances: 1,06 x rated voltage	1,06 x 240 V = 254,4 V	—
Leakage current between		I (mA)	Max. allowed I (mA)
Appliance inlet and accessible plastic enclosure		0,01	0,25

13.3	TABLE: Electric strength		P
Test voltage applied between:		Voltage (V)	Breakdown (Yes/No)
Live part and accessible plastic surface		3000	No

16.2	TABLE: Leakage current		P
	Single phase appliances: 1.06 x rated voltage.....:	254,4 V	—
	Three phase appliances 1.06 x rated voltage divided by $\sqrt{3}$:	—	—
Leakage current between		I (mA)	Max. allowed I (mA)
Live part and accessible plastic surface		0,01	0,25

16.3	TABLE: Electric strength		P
Test voltage applied between:		Voltage (V)	Breakdown (Yes/No)
Live part and accessible plastic surface		3000	No

17	TABLE: Overload protection, temperature rise		P
Temperature rise of part/at:		T (°C)	Max. T (°C)
Transformer winding		123,3	175

19.13	TABLE: Abnormal operation, temperature rises					P
Thermocouple locations	dT (K)					Max. dT (K)
	19.2	19.3	19.7 (1)	19.7 (2)	19.101	
Power cord	16,8	22,3	15,5	16,2	28,6	150
Container bottom enclosure	26,6	46,8	30,6	28,7	42,6	For clause 30.1

This document is issued by the Company subject to its General Conditions of Service printed overleaf, available on request or accessible at www.sgs.com/terms_and_conditions.htm and, for electronic format documents, subject to Terms and Conditions for Electronic Documents at www.sgs.com/terms_e-document.htm. Attention is drawn to the limitation of liability, indemnification and jurisdiction issues defined therein. Any holder of this document is advised that information contained hereon reflects the Company's findings at the time of its intervention only and within the limits of Client's instructions, if any. The Company's sole responsibility is to its Client and this document does not exonerate parties to a transaction from exercising all their rights and obligations under the transaction documents. This document cannot be produced except in full, without prior written approval of the Company. Any unauthorized alteration, forgery or falsification of the content or appearance of this document is unlawful and offenders may be prosecuted to the fullest extent of the law.

SGS-CSTC Standards Technical Services Co., Ltd. - E&E Lab Guangzhou

198 Kezhu Road, Sciencetech Park, Guangzhou Economic & Technology Development District,
Guangzhou, Guangdong, China 510663

Tel.: +86 20 8215 5555 Fax: +86 20 8207 5058

Compliance (Summary) Report

Report No.: GZES130200104401

Date: 2013-06-05

Infrared lamp cover	32,7	52,2	43,2	46,0	46,5	For clause 30.1
Appliance bottom cover	5,3	4,9	4,1	2,4	34,8	For clause 30.1
Knob of switch	3,6	5,7	2,6	1,3	5,7	For clause 30.1
Container surface	—	—	—	—	22,9	60
Vibrator motor winding	—	—	70,0	—	—	165-25=140
Pump motor winding	—	—	—	9,1	—	240-25=215
Test corner	7,2	4,9	4,2	2,5	22,2	150
Remark: During lock pump motor, R16 and R17 on main PCB was broken down.						

24.1	TABLE: Components					P
Object / part No.	Manufacturer/ trademark	Type / model	Technical data	Standard	Mark(s) of conformity	
Plug	Ningbo Qiaopu Electric Co., Ltd.	D01	AC 250 V; 2,5 A	IEC 60884-1	VDE 40001746	
- alternative	LEONI Kabel Holding GmbH	CW4014	AC 250 V; 2,5 A	IEC 60884-1	KEMA 2123587.03	
- alternative	Shenzhen Linoya Electronic Co. Ltd.	XYP-01	AC 250 V; 2,5 A	IEC 60884-1	VDE 40014956	
- alternative	New Square Company Ltd.	MT-11	AC 250 V; 2,5 A	IEC 60884-1	VDE 40009538	
- alternative	Ningbo Jiajie Electronic Co., Ltd.	JF-02	AC 250 V; 2,5 A	IEC 60884-1	VDE 40030703	
- alternative	Various	Approved type	AC 250 V; 2,5 A	IEC 60884-1	e.g. VDE	
Power cord	Ningbo Qiaopu Electric Co., Ltd.	H05VVH2-F 60227 IEC 53	2 x 0,75 mm ²	IEC 60227-5	VDE 136970	
- alternative	Ningbo Yunxin Appliance Co., Ltd.	H05VVH2-F 60227 IEC 53	2 x 0,75 mm ²	IEC 60227-5	VDE 40010786	
- alternative	Ningbo Jiajie Electronic Co., Ltd.	H05VVH2-F 60227 IEC 53	2 x 0,75 mm ²	IEC 60227-5	VDE 40028223	
- alternative	Leoni Kabel Holding GmbH	H05VVH2-F 60227 IEC 53	2 x 0,75 mm ²	IEC 60227-5	VDE 109835	
- alternative	Xinya Electronic Co., Ltd.	H05VVH2-F 60227 IEC 53	2 x 0,75 mm ²	IEC 60227-5	VDE 40000965	
- alternative	New Square Company Ltd.	H05VVH2-F 60227 IEC 53	2 x 0,75 mm ²	IEC 60227-5	VDE 116006	
- alternative	Various	H05VVH2-F 60227 IEC 53	2 x 0,75 mm ²	IEC 60227-5	e.g. VDE	
BS plug	Ningbo Yunhuan Electronics Group Corporation	Y006A	AC 250 V, 13 A	BS 1363-1	BSI KM 45980	
- alternative	LEONI Kabel Holding GmbH	CW3201	AC 250 V, 13 A	BS 1363-1	KEMA NO:2152208. 01	

This document is issued by the Company subject to its General Conditions of Service printed overleaf, available on request or accessible at www.sgs.com/terms_and_conditions.htm and, for electronic format documents, subject to Terms and Conditions for Electronic Documents at www.sgs.com/terms_e-document.htm. Attention is drawn to the limitation of liability, indemnification and jurisdiction issues defined therein. Any holder of this document is advised that information contained hereon reflects the Company's findings at the time of its intervention only and within the limits of Client's instructions, if any. The Company's sole responsibility is to its Client and this document does not exonerate parties to a transaction from exercising all their rights and obligations under the transaction documents. This document cannot be produced except in full, without prior written approval of the Company. Any unauthorized alteration, forgery or falsification of the content or appearance of this document is unlawful and offenders may be prosecuted to the fullest extent of the law.

SGS-CSTC Standards Technical Services Co., Ltd. - E&E Lab Guangzhou

198 Kezhu Road, Sciencetech Park, Guangzhou Economic & Technology Development District, Guangzhou, Guangdong, China 510663

Tel.: +86 20 8215 5555 Fax: +86 20 8207 5058

Compliance (Summary) Report

Report No.: GZES130200104401

Date: 2013-06-05

- alternative	LEONI Kabel Holding GmbH	CW3202	AC 250 V, 13 A	BS 1363-1	KEMA NO:2152208.02
- alternative	LEONI Kabel Holding GmbH	360	AC 250 V, 13 A	BS 1363-1	KEMA NO:2125106.01
- alternative	Ming Tak Electrical Wiring Company Limited	NS-17A / NS-17	AC 250 V, 13 A	BS 1363-1	ASTA 626
- alternative	Various	Approved type	AC 250 V, 13 A	BS 1363-1	e.g. KEMA
Fuse link	XC Electronics (Shenzhen) Co., Ltd	3T-Serie(s)	250 VAC; 4 A	EN 60127-1 EN 60127-3	VDE 40019614
- alternative	Dongguan Better Electronics Technology Co., Ltd.	334	250 VAC; 4 A	EN 60127-1 EN 60127-3	VDE 40025428
- alternative	Dongguan Better Electronics Technology Co., Ltd.	332	250 VAC; 4 A	EN 60127-1 EN 60127-3	TÜV Rh. J 50158950
- alternative	Hollyland Group Holdings Limited	32S/30T/30TS -Serie(s)	250 VAC; 4 A	EN 60127-1 EN 60127-3	VDE 40011830
- alternative	Walter Electronic Co., Ltd	ICP-Series	250 VAC; 4 A	EN 60127-1 EN 60127-3	VDE 40012824
- alternative	Conquer Electronics Co., Ltd	PTU	250 VAC; 4 A	EN 60127-1 EN 60127-3	VDE 40001462
X capacitor	Shenzhen Su Rong Capacitors Co., Ltd.	MPX / MKP	X2; 0,1 uF; AC 280 V; 40/100/21	EN 60384-14	VDE 40008924
- alternative	Tenta Electric Industrial Co. Ltd.	MEX	X2; 0,1 uF; AC 275 V; 40/100/21	EN 60384-14	VDE 119119
- alternative	Xiamen Wanming Electronics co.,Ltd	WPX / MPX / HQX / UTX	X2; 0,1 uF; AC 275 V; 40/100/21	EN 60384-14	VDE 40023119
- alternative	Ultra Tech Xiphi Enterprise Co. Ltd.	HQX	X2; 0,1 uF; AC 275 V; 40/100/21	EN 60384-14	VDE 40024534
- alternative	Liaoning Diya Capacitor Co., Ltd.	MKP-X2	X2; 0,1 uF; AC 280V/275V; 40/100/21	EN 60384-14	VDE 40019857
- alternative	Shantou High-New Technology Dev. Zone Songtian Enterprise Co., Ltd.	MPX	X2; 0,1 uF; AC 275 V; 40/110/56	EN 60384-14	TÜV Rh. R 50136379
VDR	Brightking (Shenzhen) Co. Ltd	471KD07	40/085/56	IEC 61051-1 IEC 61051-2 IEC 61051-2-2	VDE 40027827

This document is issued by the Company subject to its General Conditions of Service printed overleaf, available on request or accessible at www.sgs.com/terms_and_conditions.htm and, for electronic format documents, subject to Terms and Conditions for Electronic Documents at www.sgs.com/terms_e-document.htm. Attention is drawn to the limitation of liability, indemnification and jurisdiction issues defined therein. Any holder of this document is advised that information contained hereon reflects the Company's findings at the time of its intervention only and within the limits of Client's instructions, if any. The Company's sole responsibility is to its Client and this document does not exonerate parties to a transaction from exercising all their rights and obligations under the transaction documents. This document cannot be produced except in full, without prior written approval of the Company. Any unauthorized alteration, forgery or falsification of the content or appearance of this document is unlawful and offenders may be prosecuted to the fullest extent of the law.

SGS-CSTC Standards Technical Services Co., Ltd. - E&E Lab Guangzhou

198 Kezhu Road, Sciencetech Park, Guangzhou Economic & Technology Development District, Guangzhou, Guangdong, China 510663

Tel.: +86 20 8215 5555 Fax: +86 20 8207 5058

Compliance (Summary) Report

Report No.: GZES130200104401

Date: 2013-06-05

- alternative	Shantou High-New Technology Dev. Zone Songtian Enterprise Co., Ltd.	STE-07D471K	40/085/21	IEC 61051-1 IEC 61051-2 IEC 61051-2-2	VDE 40023049
- alternative	Xianhua Advanced Sensitive Components Co., Ltd	FNR-07K471	40/085/56	IEC 61051-1 IEC 61051-2 IEC 61051-2-2	VDE 40008242
- alternative	Xiamen Wanming Electronics Co., Ltd	07D471K	40/085/56	IEC 61051-1 IEC 61051-2 IEC 61051-2-2	VDE 40027412
- alternative	Hongzhi Enterprises Ltd.	HEL-07D471K	40/085/56	IEC 61051-1 IEC 61051-2 IEC 61051-2-2	VDE 40008621
Transformer	Zhangzhou Easepal Industry Co., Ltd	EF25-01	N1: $\phi 0,5\text{mm} \times 2$; 106T; 2UEW N2: $\phi 0,65\text{mm} \times 2$; 40T; 2UEW; Class 130	EN 60335-1 EN 60335-2-32	Tested with appliance
PCB	XIAMEN XINANTAIFA INDUSTRIAL CO LTD	ATF-03A/ATF-04/ATF-05	V-0	EN 60335-1 EN 60335-2-32	Tested with appliance UL E201516
- alternative	CHINA CIRCUIT TECHNOLOGY (SHANTOU) CORP	3/4/4C/4F/4E/5	V-0	EN 60335-1 EN 60335-2-32	Tested with appliance UL E99006
- alternative	FUJIAN ERLING ELECTRONICS CO LTD	FB1A / FB-4 / FB-1	V-0	EN 60335-1 EN 60335-2-32	Tested with appliance UL E148234
- alternative	XIAMEN TOPSUN ELECTRONIC TECHNOLOGY CO LTD	TS-002 / TS-003 / TS-005	V-0	EN 60335-1 EN 60335-2-32	Tested with appliance UL E252242
- alternative	SHEN ZHEN TONG WEI XIN CIRCUIT TECHNOLOGICAL CO LTD	TWX-01	V-0	EN 60335-1 EN 60335-2-32	Tested with appliance UL E319765
- alternative	SHENZHEN LONG JIANG INDUSTRY CO LTD	D	V-0	EN 60335-1 EN 60335-2-32	Tested with appliance UL E300052
- alternative	Quanzhou Yongchun Weiquan Electronic Co., Ltd.	WQFR-1/WQCEM-1	V-0	EN 60335-1 EN 60335-2-32	Tested with appliance UL E352071
Internal wire	XINYA ELECTRONIC CO LTD	1430	24 AWG, 300 V, 105 °C	EN 60335-1 EN 60335-2-32	Tested with appliance UL E170689

This document is issued by the Company subject to its General Conditions of Service printed overleaf, available on request or accessible at www.sgs.com/terms_and_conditions.htm and, for electronic format documents, subject to Terms and Conditions for Electronic Documents at www.sgs.com/terms_e-document.htm. Attention is drawn to the limitation of liability, indemnification and jurisdiction issues defined therein. Any holder of this document is advised that information contained hereon reflects the Company's findings at the time of its intervention only and within the limits of Client's instructions, if any. The Company's sole responsibility is to its Client and this document does not exonerate parties to a transaction from exercising all their rights and obligations under the transaction documents. This document cannot be produced except in full, without prior written approval of the Company. Any unauthorized alteration, forgery or falsification of the content or appearance of this document is unlawful and offenders may be prosecuted to the fullest extent of the law.

SGS-CSTC Standards Technical Services Co., Ltd. - E&E Lab Guangzhou

198 Kezhu Road, Sciencetech Park, Guangzhou Economic & Technology Development District, Guangzhou, Guangdong, China 510663

Tel.: +86 20 8215 5555 Fax: +86 20 8207 5058

Compliance (Summary) Report

Report No.: GZES130200104401

Date: 2013-06-05

- alternative	DONGGUAN JINLAN INDUSTRY CO LTD	1430	24 AWG, 300 V, 105 °C	EN 60335-1 EN 60335-2-32	Tested with appliance UL E339790
- alternative	XIAMEN HUILONG CABLE CO LTD	1430	24 AWG, 300 V, 105 °C	EN 60335-1 EN 60335-2-32	Tested with appliance UL E225375
- alternative	B&T (ZHANGZHOU) CABLE CO LTD	1430	24 AWG, 300 V, 105 °C	EN 60335-1 EN 60335-2-32	Tested with appliance UL E330484
- alternative	XIAMEN JUNMENG TECHNOLOGY CO LTD	1430	24 AWG, 300 V, 105 °C	EN 60335-1 EN 60335-2-32	Tested with appliance UL E303887
- alternative	XIAMEN YIHETAI CABLE CO LTD	1430	24 AWG, 300 V, 105 °C	EN 60335-1 EN 60335-2-32	Tested with appliance UL E241406
- alternative	LINOYA ELECTRONIC TECHNOLOGY CO LTD	1430	24 AWG, 300 V, 105 °C	EN 60335-1 EN 60335-2-32	Tested with appliance UL E315619
- alternative	Various	1430	24 AWG, 300 V, 105 °C	EN 60335-1 EN 60335-2-32	e.g. UL
Vibrator motor	Zhangzhou Easepal Industrial Co., Ltd.	ESPL-365-D024-001	DC 24 V; 0,4 A; Class 120	EN 60335-1 EN 60335-2-32	Tested with appliance
Air pump	Zhangzhou Easepal Industrial Co., Ltd.	ESPL-365-D024-FB100-1	DC 24 V, 16 W, Class 155	EN 60335-1 EN 60335-2-32	Tested with appliance
Heating wire	DONGGUAN GUANSHUN INDUSTRY CO., LTD	3270	Φ2,0; 600V; 200°C; 545 Ω/m	EN 60335-1 EN 60335-2-32	Tested with appliance UL E230488
- alternative	GUANGZHOU JIANLONG ELECTRICAL CO LTD	3270	Φ2,0; 600V; 200°C; 545 Ω/m	EN 60335-1 EN 60335-2-32	Tested with appliance UL E256994
Infrared lamp	DongGuan HaoRui Industrial Investment Co., Ltd	—	32 V, 30 mA	EN 60335-1 EN 60335-2-32	Tested with appliance
Infrared Cover	TEIJIN POLYCARBONATE CHINA LTD	L-1225	PC, V-2	EN 60335-1 EN 60335-2-32	Tested with appliance UL E245526
Bubble Strip / Knob of switch	LG CHEM LTD	H1500	PP, HB	EN 60335-1 EN 60335-2-32	Tested with appliance UL E140737
Air Pump Cover	ZHEN JIANG CHI MEI CHEMICAL CO LTD	D-180	ABS, HB	EN 60335-1 EN 60335-2-32	Tested with appliance UL E194560
Appliance plastic enclosure	SAMSUNG TOTAL PETROCHEMICALS CO LTD	FB51	PP, V-2	EN 60335-1 EN 60335-2-32	Tested with appliance UL E140331

29.1	TABLE: Clearances	P
------	-------------------	---

This document is issued by the Company subject to its General Conditions of Service printed overleaf, available on request or accessible at www.sgs.com/terms_and_conditions.htm and, for electronic format documents, subject to Terms and Conditions for Electronic Documents at www.sgs.com/terms_e-document.htm. Attention is drawn to the limitation of liability, indemnification and jurisdiction issues defined therein. Any holder of this document is advised that information contained hereon reflects the Company's findings at the time of its intervention only and within the limits of Client's instructions, if any. The Company's sole responsibility is to its Client and this document does not exonerate parties to a transaction from exercising all their rights and obligations under the transaction documents. This document cannot be produced except in full, without prior written approval of the Company. Any unauthorized alteration, forgery or falsification of the content or appearance of this document is unlawful and offenders may be prosecuted to the fullest extent of the law.

SGS-CSTC Standards Technical Services Co., Ltd. - E&E Lab Guangzhou

198 Kezhu Road, Scientech Park, Guangzhou Economic & Technology Development District, Guangzhou, Guangdong, China 510663

Tel.: +86 20 8215 5555 Fax: +86 20 8207 5058

Compliance (Summary) Report

Report No.: GZES130200104401

Date: 2013-06-05

Overvoltage category ... :		II				—
		Type of insulation:				
Rated impulse voltage (V):	Min. cl (mm)	Basic	Functional	Supplementary	Reinforced	Verdict / Remark
2 500	2,0	—	a) 5,0 mm	b) 15,4 mm	—	P / a) B/W L&N of supply in switching power PCB b) B/W internal wire and accessible surface
4 000	3,5	—	—	—	d) 20,8mm	P / d) B/W Live part and accessible surface
*) The value is increased to 0,8mm for pollution degree 3 *) If the construction is affected by wear, distortion, movement of the parts or during assembly, the value is increased by 0,5 mm						

29.2	TABLE: Creepage distances, basic, supplementary and reinforced insulation										P
Working voltage (V)	Creepage distance (mm)										
	Pollution degree										
	1	2			3			Type of insulation			
		Material group			Material group			(mm)			
		I	II	IIIa/IIIb	I	II	IIIa/IIIb	B*)	S*)	R*)	Verdict
>125 and ≤250	0,6	1,3	1,8	2,5	3,2	3,6	4,0	—	15,4	—	P / b)
>125 and ≤250	1,2	2,6	3,6	5,0	6,4	7,2	8,0	—	—	20,8	P / c)
*), B=Basic, S=Supplementary and R=Reinforced											

29.2	TABLE: Creepage distances, functional insulation								P
Working voltage (V)	Creepage distance (mm) Pollution degree								
	1	2			3				
		Material group			Material group				
		I	II	IIIa/IIIb	I	II	IIIa/IIIb	Verdict / Remark	
>125 and ≤250	0,4	1,0	1,4	2,0	2,5	2,8	3,2	P / b) 5,0 mm	

30.1	TABLE: Ball pressure				P
Part		Test temperature (°C)		Impression diameter (mm)	Allowed impression diameter (mm)
Appliance plastic enclosure		75		1,5	2,0
Infrared Cover		87,1		0,6	2,0

This document is issued by the Company subject to its General Conditions of Service printed overleaf, available on request or accessible at www.sgs.com/terms_and_conditions.htm and, for electronic format documents, subject to Terms and Conditions for Electronic Documents at www.sgs.com/terms_e-document.htm. Attention is drawn to the limitation of liability, indemnification and jurisdiction issues defined therein. Any holder of this document is advised that information contained hereon reflects the Company's findings at the time of its intervention only and within the limits of Client's instructions, if any. The Company's sole responsibility is to its Client and this document does not exonerate parties to a transaction from exercising all their rights and obligations under the transaction documents. This document cannot be produced except in full, without prior written approval of the Company. Any unauthorized alteration, forgery or falsification of the content or appearance of this document is unlawful and offenders may be prosecuted to the fullest extent of the law.

SGS-CSTC Standards Technical Services Co., Ltd. - E&E Lab Guangzhou

198 Kezhu Road, Sciencetech Park, Guangzhou Economic & Technology Development District, Guangzhou, Guangdong, China 510663

Tel.: +86 20 8215 5555 Fax: +86 20 8207 5058

Compliance (Summary) Report

Report No.: GZES130200104401

Date: 2013-06-05

Transformer bobbin	125	0,8	2,0
Inductor bobbin	125	0,7	2,0
Vibrator motor brush holder	125	0,8	2,0
Air pump brush holder	125	1,0	2,0
Knob of switch	75	1,0	2,0

30.2	TABLE: Glow-wire test			P
Part		Test temperature (°C)	Result / observation	Remark
Appliance plastic enclosure		550	Pass / no flame, no glowing drop	—
Infrared Cover		500	Pass / no flame, no glowing drop	—
Transformer bobbin		650	Pass / no flame, no glowing drop	—
Inductor bobbin		650	Pass / no flame, no glowing drop	—
Vibrator motor brush holder		650	Pass / no flame, no glowing drop	—
Air pump brush holder		650	Pass / no flame, no glowing drop	—
Connector		650	Pass / no flame, no glowing drop	—
Knob of switch		550	Pass / no flame, no glowing drop	—

This document is issued by the Company subject to its General Conditions of Service printed overleaf, available on request or accessible at www.sgs.com/terms_and_conditions.htm and, for electronic format documents, subject to Terms and Conditions for Electronic Documents at www.sgs.com/terms_e-document.htm. Attention is drawn to the limitation of liability, indemnification and jurisdiction issues defined therein. Any holder of this document is advised that information contained hereon reflects the Company's findings at the time of its intervention only and within the limits of Client's instructions, if any. The Company's sole responsibility is to its Client and this document does not exonerate parties to a transaction from exercising all their rights and obligations under the transaction documents. This document cannot be produced except in full, without prior written approval of the Company. Any unauthorized alteration, forgery or falsification of the content or appearance of this document is unlawful and offenders may be prosecuted to the fullest extent of the law.

SGS-CSTC Standards Technical Services Co., Ltd. - E&E Lab Guangzhou

198 Kezhu Road, Sciencetech Park, Guangzhou Economic & Technology Development District,
Guangzhou, Guangdong, China 510663

Tel.: +86 20 8215 5555 Fax: +86 20 8207 5058

Compliance (Summary) Report

Report No.: GZES130200104401

Date: 2013-06-05

ANNEX 2: Photo documentation

Details of: CH-FS110-GB, 1471090

View:

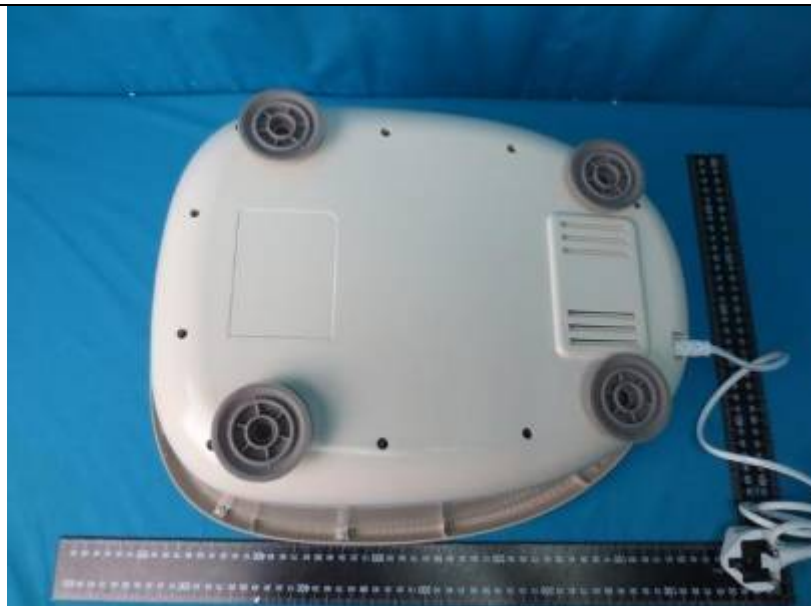
- ☐ general
- ☒ front
- ☐ rear
- ☐ right
- ☐ left
- ☐ top
- ☐ bottom



Details of: CH-FS110-GB, 1471090

View:

- ☐ general
- ☐ front
- ☐ rear
- ☐ right
- ☐ left
- ☐ top
- ☒ bottom



This document is issued by the Company subject to its General Conditions of Service printed overleaf, available on request or accessible at www.sgs.com/terms_and_conditions.htm and, for electronic format documents, subject to Terms and Conditions for Electronic Documents at www.sgs.com/terms_e-document.htm. Attention is drawn to the limitation of liability, indemnification and jurisdiction issues defined therein. Any holder of this document is advised that information contained hereon reflects the Company's findings at the time of its intervention only and within the limits of Client's instructions, if any. The Company's sole responsibility is to its Client and this document does not exonerate parties to a transaction from exercising all their rights and obligations under the transaction documents. This document cannot be produced except in full, without prior written approval of the Company. Any unauthorized alteration, forgery or falsification of the content or appearance of this document is unlawful and offenders may be prosecuted to the fullest extent of the law.

SGS-CSTC Standards Technical Services Co., Ltd. - E&E Lab Guangzhou

198 Kezhu Road, Sciencetech Park, Guangzhou Economic & Technology Development District, Guangzhou, Guangdong, China 510663

Tel.: +86 20 8215 5555 Fax: +86 20 8207 5058

Compliance (Summary) Report

Report No.: GZES130200104401

Date: 2013-06-05

Details of: CH-FS110-GB, 1471090

View:

- ☐ general
- ☒ front
- ☐ rear
- ☐ right
- ☐ left
- ☐ top
- ☐ bottom



Details of: CH-FS110-GB, 1471090

View:

- ☐ general
- ☐ front
- ☒ rear
- ☐ right
- ☐ left
- ☐ top
- ☐ bottom



This document is issued by the Company subject to its General Conditions of Service printed overleaf, available on request or accessible at www.sgs.com/terms_and_conditions.htm and, for electronic format documents, subject to Terms and Conditions for Electronic Documents at www.sgs.com/terms_e-document.htm. Attention is drawn to the limitation of liability, indemnification and jurisdiction issues defined therein. Any holder of this document is advised that information contained hereon reflects the Company's findings at the time of its intervention only and within the limits of Client's instructions, if any. The Company's sole responsibility is to its Client and this document does not exonerate parties to a transaction from exercising all their rights and obligations under the transaction documents. This document cannot be produced except in full, without prior written approval of the Company. Any unauthorized alteration, forgery or falsification of the content or appearance of this document is unlawful and offenders may be prosecuted to the fullest extent of the law.

SGS-CSTC Standards Technical Services Co., Ltd. - E&E Lab Guangzhou

198 Kezhu Road, Sciencetech Park, Guangzhou Economic & Technology Development District, Guangzhou, Guangdong, China 510663

Tel.: +86 20 8215 5555 Fax: +86 20 8207 5058

Compliance (Summary) Report

Report No.: GZES130200104401

Date: 2013-06-05

Details of: CH-FS110-GB, 1471090

View:

- ☐ general
- ☐ front
- ☐ rear
- ☐ right
- ☒ left
- ☐ top
- ☐ bottom



Details of: CH-FS110-GB, 1471090

View:

- ☐ general
- ☐ front
- ☐ rear
- ☒ right
- ☐ left
- ☐ top
- ☐ bottom



This document is issued by the Company subject to its General Conditions of Service printed overleaf, available on request or accessible at www.sgs.com/terms_and_conditions.htm and, for electronic format documents, subject to Terms and Conditions for Electronic Documents at www.sgs.com/terms_e-document.htm. Attention is drawn to the limitation of liability, indemnification and jurisdiction issues defined therein. Any holder of this document is advised that information contained hereon reflects the Company's findings at the time of its intervention only and within the limits of Client's instructions, if any. The Company's sole responsibility is to its Client and this document does not exonerate parties to a transaction from exercising all their rights and obligations under the transaction documents. This document cannot be produced except in full, without prior written approval of the Company. Any unauthorized alteration, forgery or falsification of the content or appearance of this document is unlawful and offenders may be prosecuted to the fullest extent of the law.

SGS-CSTC Standards Technical Services Co., Ltd. - E&E Lab Guangzhou

198 Kezhu Road, Sciencetech Park, Guangzhou Economic & Technology Development District,
Guangzhou, Guangdong, China 510663

Tel.: +86 20 8215 5555 Fax: +86 20 8207 5058

Compliance (Summary) Report

Report No.: GZES130200104401

Date: 2013-06-05

Details of: Control panel (CH-FS110-GB, 1471090)

View:

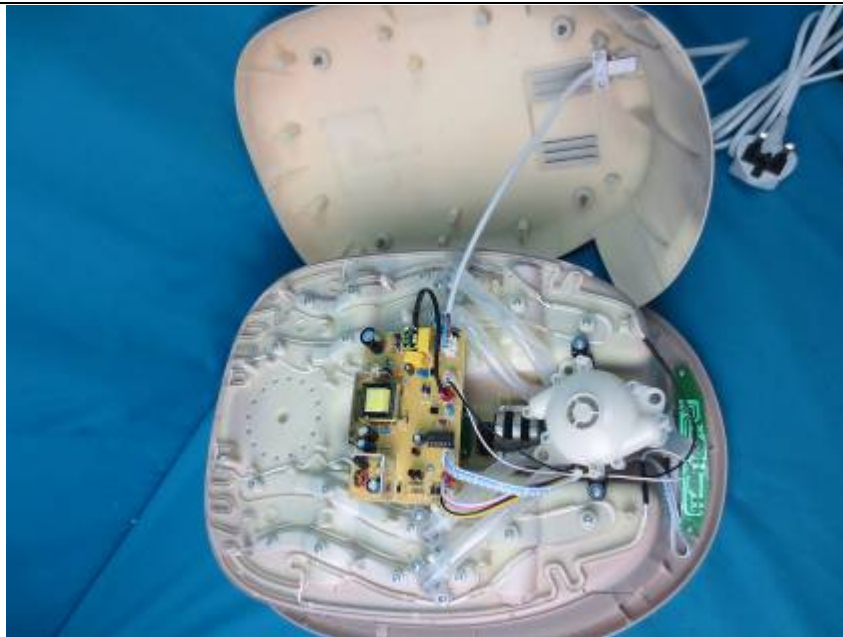
- ☐ general
- ☐ front
- ☐ rear
- ☐ right
- ☒ left
- ☐ top
- ☐ bottom



Details of: CH-FS110-GB, 1471090 inside view

View:

- ☒ general
- ☐ front
- ☐ rear
- ☐ right
- ☐ left
- ☐ top
- ☐ bottom



This document is issued by the Company subject to its General Conditions of Service printed overleaf, available on request or accessible at www.sgs.com/terms_and_conditions.htm and, for electronic format documents, subject to Terms and Conditions for Electronic Documents at www.sgs.com/terms_e-document.htm. Attention is drawn to the limitation of liability, indemnification and jurisdiction issues defined therein. Any holder of this document is advised that information contained herein reflects the Company's findings at the time of its intervention only and within the limits of Client's instructions, if any. The Company's sole responsibility is to its Client and this document does not exonerate parties to a transaction from exercising all their rights and obligations under the transaction documents. This document cannot be produced except in full, without prior written approval of the Company. Any unauthorized alteration, forgery or falsification of the content or appearance of this document is unlawful and offenders may be prosecuted to the fullest extent of the law.

SGS-CSTC Standards Technical Services Co., Ltd. - E&E Lab Guangzhou

198 Kezhu Road, Sciencetech Park, Guangzhou Economic & Technology Development District, Guangzhou, Guangdong, China 510663

Tel.: +86 20 8215 5555 Fax: +86 20 8207 5058

Compliance (Summary) Report

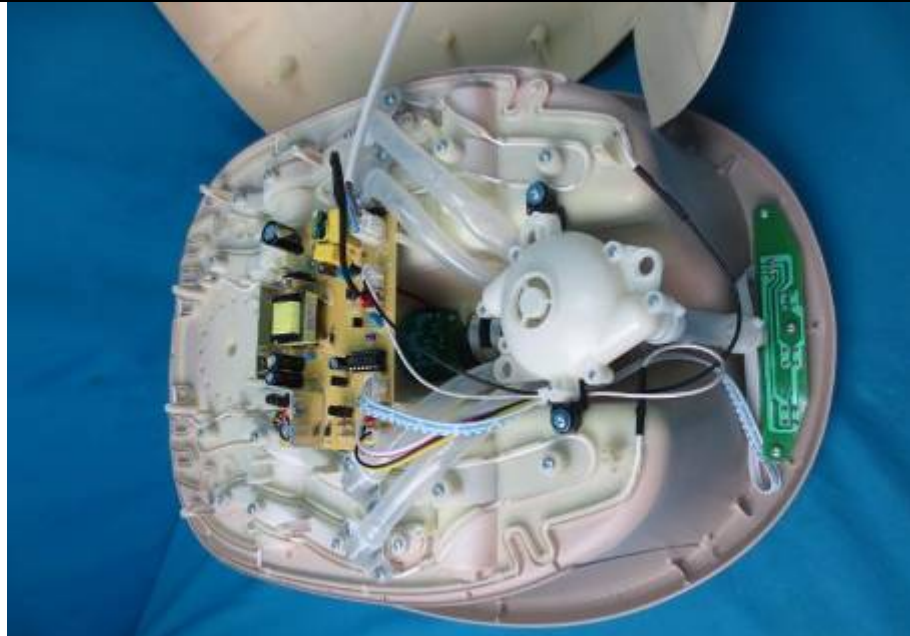
Report No.: GZES130200104401

Date: 2013-06-05

Details of: CH-FS110-GB, 1471090 inside view

View:

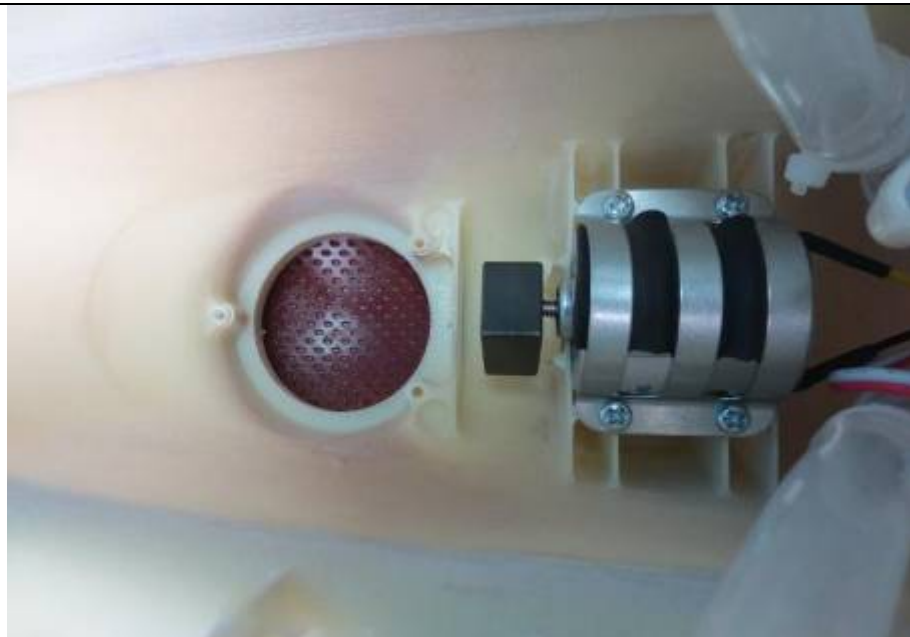
- ☒ general
- ☐ front
- ☐ rear
- ☐ right
- ☐ left
- ☐ top
- ☐ bottom



Details of: CH-FS110-GB, 1471090 inside view

View:

- ☒ general
- ☐ front
- ☐ rear
- ☐ right
- ☐ left
- ☐ top
- ☐ bottom



This document is issued by the Company subject to its General Conditions of Service printed overleaf, available on request or accessible at www.sgs.com/terms_and_conditions.htm and, for electronic format documents, subject to Terms and Conditions for Electronic Documents at www.sgs.com/terms_e-document.htm. Attention is drawn to the limitation of liability, indemnification and jurisdiction issues defined therein. Any holder of this document is advised that information contained hereon reflects the Company's findings at the time of its intervention only and within the limits of Client's instructions, if any. The Company's sole responsibility is to its Client and this document does not exonerate parties to a transaction from exercising all their rights and obligations under the transaction documents. This document cannot be produced except in full, without prior written approval of the Company. Any unauthorized alteration, forgery or falsification of the content or appearance of this document is unlawful and offenders may be prosecuted to the fullest extent of the law.

Compliance (Summary) Report

Report No.: GZES130200104401

Date: 2013-06-05

Details of: CH-FS110-GB, 1471090 inside view

View:

- ☐ general
- ☐ front
- ☐ rear
- ☐ right
- ☐ left
- ☒ top
- ☐ bottom



Details of: ELM-FS100-GB, ELMFS-150-EU

View:

- ☐ general
- ☒ front
- ☐ rear
- ☐ right
- ☐ left
- ☐ top
- ☐ bottom



This document is issued by the Company subject to its General Conditions of Service printed overleaf, available on request or accessible at www.sgs.com/terms_and_conditions.htm and, for electronic format documents, subject to Terms and Conditions for Electronic Documents at www.sgs.com/terms_e-document.htm. Attention is drawn to the limitation of liability, indemnification and jurisdiction issues defined therein. Any holder of this document is advised that information contained hereon reflects the Company's findings at the time of its intervention only and within the limits of Client's instructions, if any. The Company's sole responsibility is to its Client and this document does not exonerate parties to a transaction from exercising all their rights and obligations under the transaction documents. This document cannot be produced except in full, without prior written approval of the Company. Any unauthorized alteration, forgery or falsification of the content or appearance of this document is unlawful and offenders may be prosecuted to the fullest extent of the law.

SGS-CSTC Standards Technical Services Co., Ltd. - E&E Lab Guangzhou

198 Kezhu Road, Sciencetech Park, Guangzhou Economic & Technology Development District, Guangzhou, Guangdong, China 510663

Tel.: +86 20 8215 5555 Fax: +86 20 8207 5058

Compliance (Summary) Report

Report No.: GZES130200104401

Date: 2013-06-05

Details of: ELM-FS100-GB, ELMFS-150-EU

View:

- ☐ general
- ☐ front
- ☒ rear
- ☐ right
- ☐ left
- ☐ top
- ☐ bottom



Details of: ELM-FS100-GB, ELMFS-150-EU

View:

- ☐ general
- ☒ front
- ☐ rear
- ☐ right
- ☐ left
- ☐ top
- ☐ bottom



This document is issued by the Company subject to its General Conditions of Service printed overleaf, available on request or accessible at www.sgs.com/terms_and_conditions.htm and, for electronic format documents, subject to Terms and Conditions for Electronic Documents at www.sgs.com/terms_e-document.htm. Attention is drawn to the limitation of liability, indemnification and jurisdiction issues defined therein. Any holder of this document is advised that information contained hereon reflects the Company's findings at the time of its intervention only and within the limits of Client's instructions, if any. The Company's sole responsibility is to its Client and this document does not exonerate parties to a transaction from exercising all their rights and obligations under the transaction documents. This document cannot be produced except in full, without prior written approval of the Company. Any unauthorized alteration, forgery or falsification of the content or appearance of this document is unlawful and offenders may be prosecuted to the fullest extent of the law.

SGS-CSTC Standards Technical Services Co., Ltd. - E&E Lab Guangzhou

198 Kezhu Road, Sciencetech Park, Guangzhou Economic & Technology Development District, Guangzhou, Guangdong, China 510663

Tel.: +86 20 8215 5555 Fax: +86 20 8207 5058

Compliance (Summary) Report

Report No.: GZES130200104401

Date: 2013-06-05

Details of: ELM-FS100-GB, ELMFS-150-EU

View:

- ☐ general
- ☐ front
- ☒ rear
- ☐ right
- ☐ left
- ☐ top
- ☐ bottom



Details of: ELM-FS100-GB, ELMFS-150-EU

View:

- ☐ general
- ☐ front
- ☐ rear
- ☐ right
- ☒ left
- ☐ top
- ☐ bottom



This document is issued by the Company subject to its General Conditions of Service printed overleaf, available on request or accessible at www.sgs.com/terms_and_conditions.htm and, for electronic format documents, subject to Terms and Conditions for Electronic Documents at www.sgs.com/terms_e-document.htm. Attention is drawn to the limitation of liability, indemnification and jurisdiction issues defined therein. Any holder of this document is advised that information contained hereon reflects the Company's findings at the time of its intervention only and within the limits of Client's instructions, if any. The Company's sole responsibility is to its Client and this document does not exonerate parties to a transaction from exercising all their rights and obligations under the transaction documents. This document cannot be produced except in full, without prior written approval of the Company. Any unauthorized alteration, forgery or falsification of the content or appearance of this document is unlawful and offenders may be prosecuted to the fullest extent of the law.

SGS-CSTC Standards Technical Services Co., Ltd. - E&E Lab Guangzhou

198 Kezhu Road, Sciencetech Park, Guangzhou Economic & Technology Development District, Guangzhou, Guangdong, China 510663

Tel.: +86 20 8215 5555 Fax: +86 20 8207 5058

Compliance (Summary) Report

Report No.: GZES130200104401

Date: 2013-06-05

Details of: ELM-FS100-GB, ELMFS-150-EU

View:

- ☐ general
- ☐ front
- ☐ rear
- ☒ right
- ☐ left
- ☐ top
- ☐ bottom



Details of: Control panel (ELM-FS100-GB, ELMFS-150-EU)

View:

- ☒ general
- ☐ front
- ☐ rear
- ☐ right
- ☐ left
- ☐ top
- ☐ bottom



This document is issued by the Company subject to its General Conditions of Service printed overleaf, available on request or accessible at www.sgs.com/terms_and_conditions.htm and, for electronic format documents, subject to Terms and Conditions for Electronic Documents at www.sgs.com/terms_e-document.htm. Attention is drawn to the limitation of liability, indemnification and jurisdiction issues defined therein. Any holder of this document is advised that information contained hereon reflects the Company's findings at the time of its intervention only and within the limits of Client's instructions, if any. The Company's sole responsibility is to its Client and this document does not exonerate parties to a transaction from exercising all their rights and obligations under the transaction documents. This document cannot be produced except in full, without prior written approval of the Company. Any unauthorized alteration, forgery or falsification of the content or appearance of this document is unlawful and offenders may be prosecuted to the fullest extent of the law.

SGS-CSTC Standards Technical Services Co., Ltd. - E&E Lab Guangzhou

198 Kezhu Road, Sciencetech Park, Guangzhou Economic & Technology Development District, Guangzhou, Guangdong, China 510663

Tel.: +86 20 8215 5555 Fax: +86 20 8207 5058

Compliance (Summary) Report

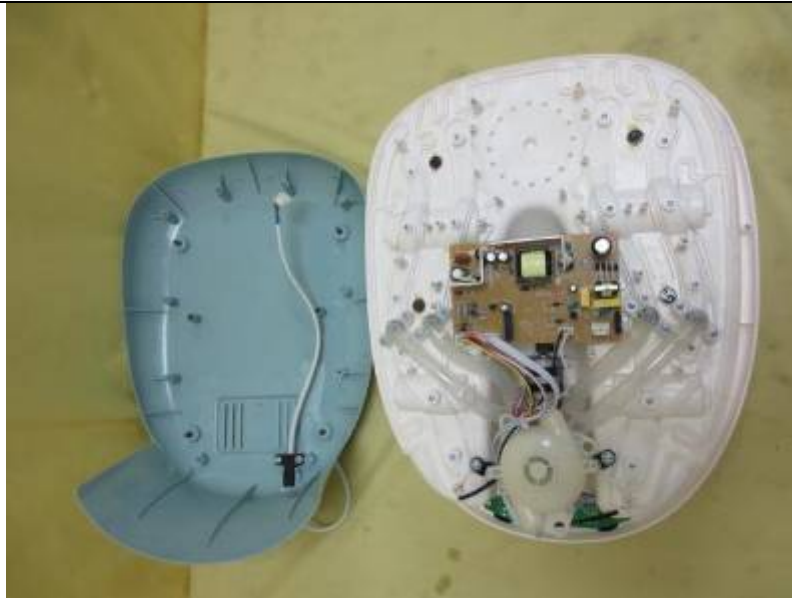
Report No.: GZES130200104401

Date: 2013-06-05

Details of: Inside view (ELM-FS100-GB, ELMFS-150-EU)

View:

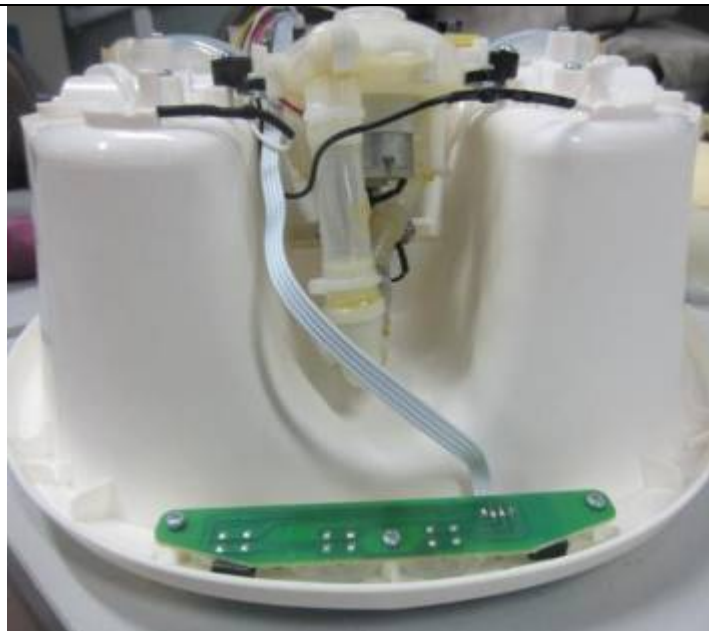
- ☒ general
- ☐ front
- ☐ rear
- ☐ right
- ☐ left
- ☐ top
- ☐ bottom



Details of: Inside view (ELM-FS100-GB, ELMFS-150-EU)

View:

- ☐ general
- ☐ front
- ☒ rear
- ☐ right
- ☐ left
- ☐ top
- ☐ bottom



This document is issued by the Company subject to its General Conditions of Service printed overleaf, available on request or accessible at www.sgs.com/terms_and_conditions.htm and, for electronic format documents, subject to Terms and Conditions for Electronic Documents at www.sgs.com/terms_e-document.htm. Attention is drawn to the limitation of liability, indemnification and jurisdiction issues defined therein. Any holder of this document is advised that information contained hereon reflects the Company's findings at the time of its intervention only and within the limits of Client's instructions, if any. The Company's sole responsibility is to its Client and this document does not exonerate parties to a transaction from exercising all their rights and obligations under the transaction documents. This document cannot be produced except in full, without prior written approval of the Company. Any unauthorized alteration, forgery or falsification of the content or appearance of this document is unlawful and offenders may be prosecuted to the fullest extent of the law.

SGS-CSTC Standards Technical Services Co., Ltd. - E&E Lab Guangzhou

198 Kezhu Road, Sciencetech Park, Guangzhou Economic & Technology Development District, Guangzhou, Guangdong, China 510663

Tel.: +86 20 8215 5555 Fax: +86 20 8207 5058

Compliance (Summary) Report

Report No.: GZES130200104401

Date: 2013-06-05

Details of: Vibrator motor for all model

View:

- ☒ general
- ☐ front
- ☐ rear
- ☐ right
- ☐ left
- ☐ top
- ☐ bottom



Details of: Air pump for all model

View:

- ☐ general
- ☐ front
- ☒ rear
- ☐ right
- ☐ left
- ☐ top
- ☐ bottom



This document is issued by the Company subject to its General Conditions of Service printed overleaf, available on request or accessible at www.sgs.com/terms_and_conditions.htm and, for electronic format documents, subject to Terms and Conditions for Electronic Documents at www.sgs.com/terms_e-document.htm. Attention is drawn to the limitation of liability, indemnification and jurisdiction issues defined therein. Any holder of this document is advised that information contained hereon reflects the Company's findings at the time of its intervention only and within the limits of Client's instructions, if any. The Company's sole responsibility is to its Client and this document does not exonerate parties to a transaction from exercising all their rights and obligations under the transaction documents. This document cannot be produced except in full, without prior written approval of the Company. Any unauthorized alteration, forgery or falsification of the content or appearance of this document is unlawful and offenders may be prosecuted to the fullest extent of the law.

SGS-CSTC Standards Technical Services Co., Ltd. - E&E Lab Guangzhou

198 Kezhu Road, Sciencetech Park, Guangzhou Economic & Technology Development District, Guangzhou, Guangdong, China 510663

Tel.: +86 20 8215 5555 Fax: +86 20 8207 5058

Compliance (Summary) Report

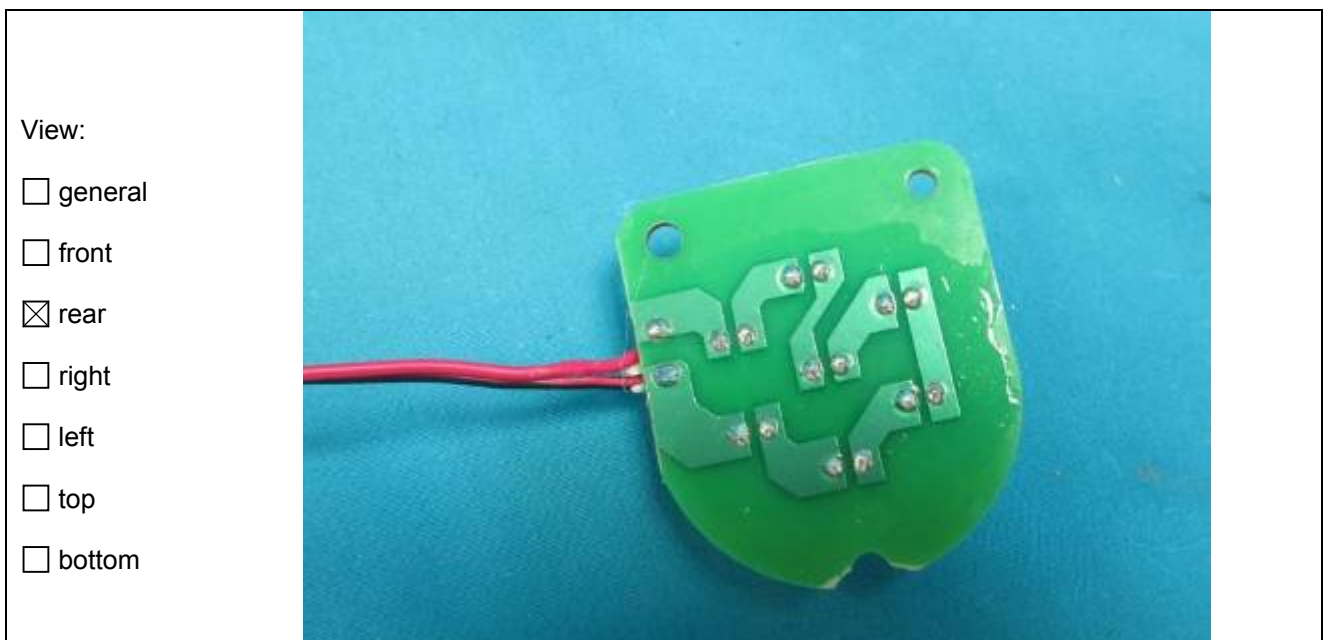
Report No.: GZES130200104401

Date: 2013-06-05

Details of: PCB for Infrared lamp



Details of: PCB for Infrared lamp



This document is issued by the Company subject to its General Conditions of Service printed overleaf, available on request or accessible at www.sgs.com/terms_and_conditions.htm and, for electronic format documents, subject to Terms and Conditions for Electronic Documents at www.sgs.com/terms_e-document.htm. Attention is drawn to the limitation of liability, indemnification and jurisdiction issues defined therein. Any holder of this document is advised that information contained hereon reflects the Company's findings at the time of its intervention only and within the limits of Client's instructions, if any. The Company's sole responsibility is to its Client and this document does not exonerate parties to a transaction from exercising all their rights and obligations under the transaction documents. This document cannot be produced except in full, without prior written approval of the Company. Any unauthorized alteration, forgery or falsification of the content or appearance of this document is unlawful and offenders may be prosecuted to the fullest extent of the law.

Compliance (Summary) Report

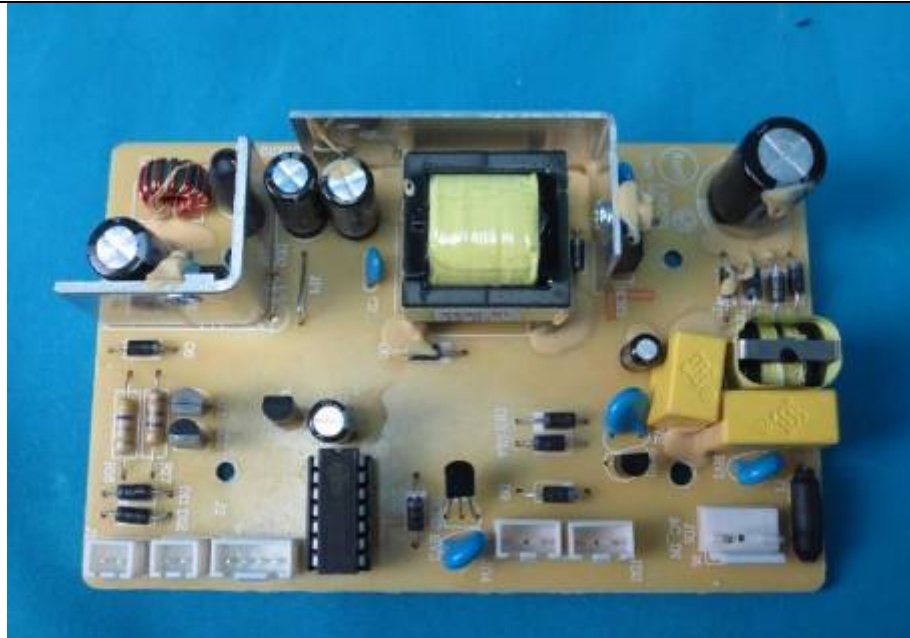
Report No.: GZES130200104401

Date: 2013-06-05

Details of: Main PCB (CH-FS110-GB, 1471090)

View:

- ☐ general
- ☒ front
- ☐ rear
- ☐ right
- ☐ left
- ☐ top
- ☐ bottom



Details of: Main PCB (ELM-FS100-GB, ELMFS-150-EU)

View:

- ☐ general
- ☒ front
- ☐ rear
- ☐ right
- ☐ left
- ☐ top
- ☐ bottom



This document is issued by the Company subject to its General Conditions of Service printed overleaf, available on request or accessible at www.sgs.com/terms_and_conditions.htm and, for electronic format documents, subject to Terms and Conditions for Electronic Documents at www.sgs.com/terms_e-document.htm. Attention is drawn to the limitation of liability, indemnification and jurisdiction issues defined therein. Any holder of this document is advised that information contained hereon reflects the Company's findings at the time of its intervention only and within the limits of Client's instructions, if any. The Company's sole responsibility is to its Client and this document does not exonerate parties to a transaction from exercising all their rights and obligations under the transaction documents. This document cannot be produced except in full, without prior written approval of the Company. Any unauthorized alteration, forgery or falsification of the content or appearance of this document is unlawful and offenders may be prosecuted to the fullest extent of the law.

SGS-CSTC Standards Technical Services Co., Ltd. - E&E Lab Guangzhou

198 Kezhu Road, Sciencetech Park, Guangzhou Economic & Technology Development District, Guangzhou, Guangdong, China 510663

Tel.: +86 20 8215 5555 Fax: +86 20 8207 5058

Compliance (Summary) Report

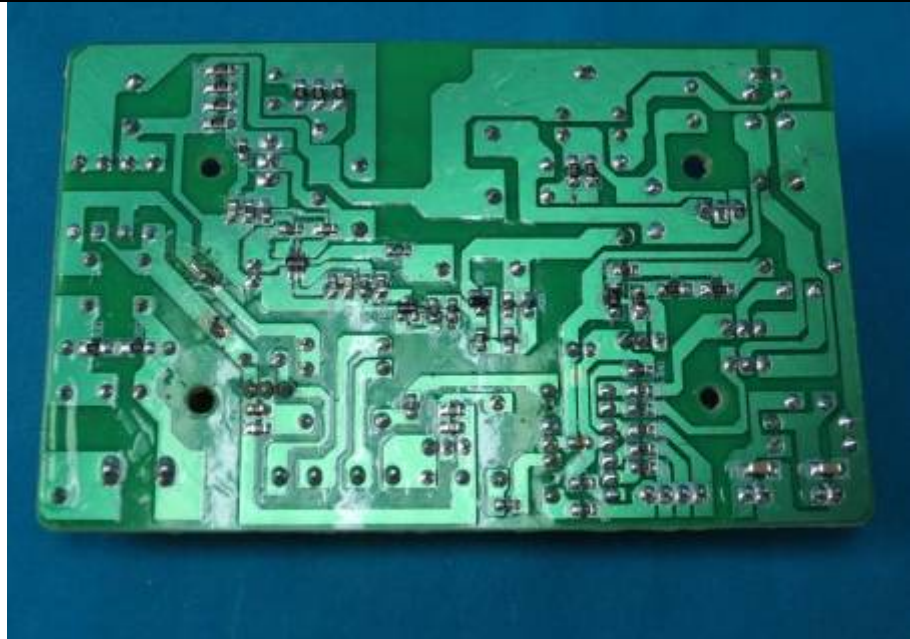
Report No.: GZES130200104401

Date: 2013-06-05

Details of: Main PCB for all model

View:

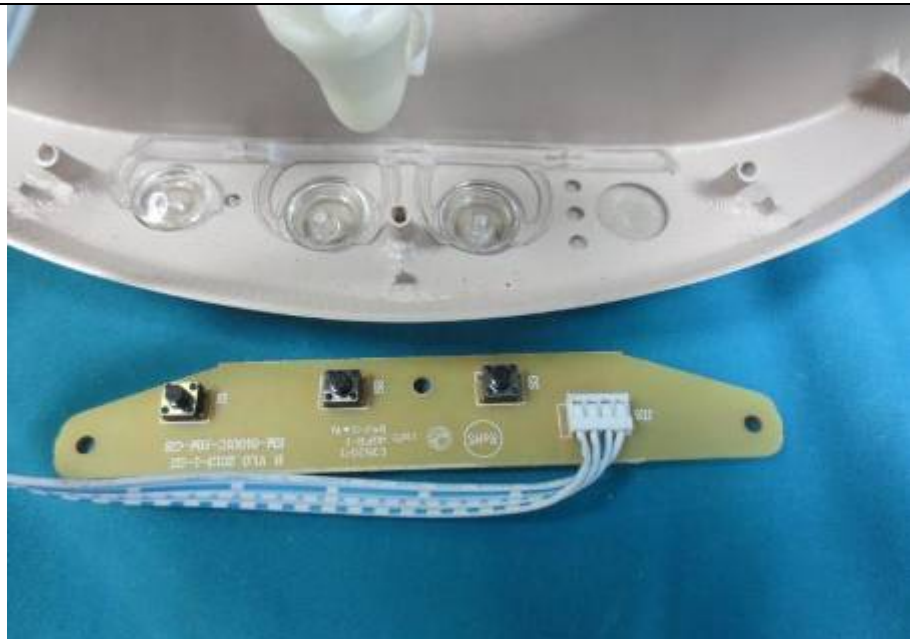
- ☐ general
- ☐ front
- ☒ rear
- ☐ right
- ☐ left
- ☐ top
- ☐ bottom



Details of: Control PCB (CH-FS110-GB, 1471090)

View:

- ☐ general
- ☒ front
- ☐ rear
- ☐ right
- ☐ left
- ☐ top
- ☐ bottom



This document is issued by the Company subject to its General Conditions of Service printed overleaf, available on request or accessible at www.sgs.com/terms_and_conditions.htm and, for electronic format documents, subject to Terms and Conditions for Electronic Documents at www.sgs.com/terms_e-document.htm. Attention is drawn to the limitation of liability, indemnification and jurisdiction issues defined therein. Any holder of this document is advised that information contained hereon reflects the Company's findings at the time of its intervention only and within the limits of Client's instructions, if any. The Company's sole responsibility is to its Client and this document does not exonerate parties to a transaction from exercising all their rights and obligations under the transaction documents. This document cannot be produced except in full, without prior written approval of the Company. Any unauthorized alteration, forgery or falsification of the content or appearance of this document is unlawful and offenders may be prosecuted to the fullest extent of the law.

SGS-CSTC Standards Technical Services Co., Ltd. - E&E Lab Guangzhou

198 Kezhu Road, Sciencetech Park, Guangzhou Economic & Technology Development District, Guangzhou, Guangdong, China 510663

Tel.: +86 20 8215 5555 Fax: +86 20 8207 5058

Compliance (Summary) Report

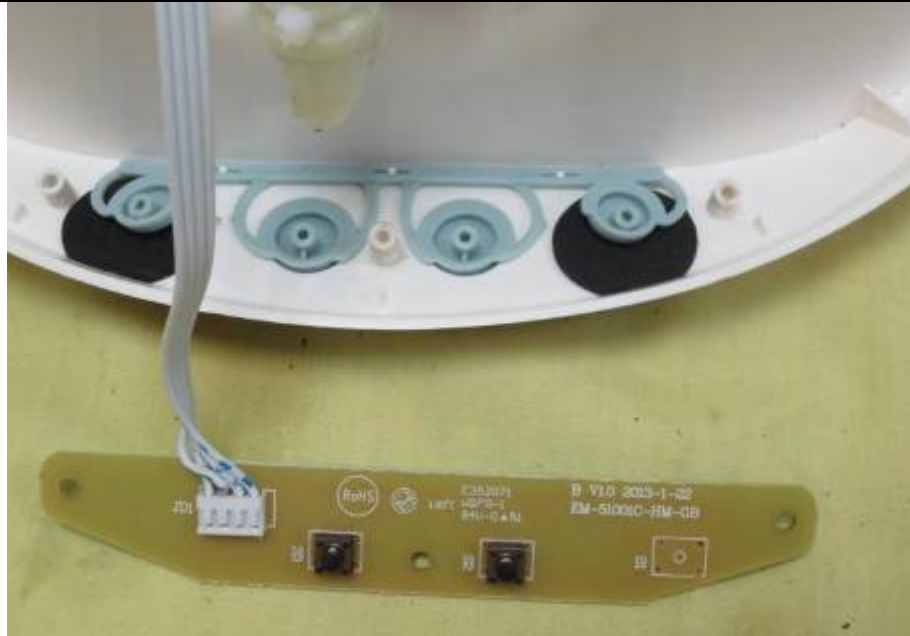
Report No.: GZES130200104401

Date: 2013-06-05

Details of: Control PCB (ELM-FS100-GB, ELMFS-150-EU)

View:

- ☐ general
- ☒ front
- ☐ rear
- ☐ right
- ☐ left
- ☐ top
- ☐ bottom



Details of: Control PCB for all model

View:

- ☐ general
- ☐ front
- ☒ rear
- ☐ right
- ☐ left
- ☐ top
- ☐ bottom



This document is issued by the Company subject to its General Conditions of Service printed overleaf, available on request or accessible at www.sgs.com/terms_and_conditions.htm and, for electronic format documents, subject to Terms and Conditions for Electronic Documents at www.sgs.com/terms_e-document.htm. Attention is drawn to the limitation of liability, indemnification and jurisdiction issues defined therein. Any holder of this document is advised that information contained hereon reflects the Company's findings at the time of its intervention only and within the limits of Client's instructions, if any. The Company's sole responsibility is to its Client and this document does not exonerate parties to a transaction from exercising all their rights and obligations under the transaction documents. This document cannot be produced except in full, without prior written approval of the Company. Any unauthorized alteration, forgery or falsification of the content or appearance of this document is unlawful and offenders may be prosecuted to the fullest extent of the law.

SGS-CSTC Standards Technical Services Co., Ltd. - E&E Lab Guangzhou

198 Kezhu Road, Sciencetech Park, Guangzhou Economic & Technology Development District, Guangzhou, Guangdong, China 510663

Tel.: +86 20 8215 5555 Fax: +86 20 8207 5058

Compliance (Summary) Report

Report No.: GZES130200104401

Date: 2013-06-05

Details of: Water level for all model

View:

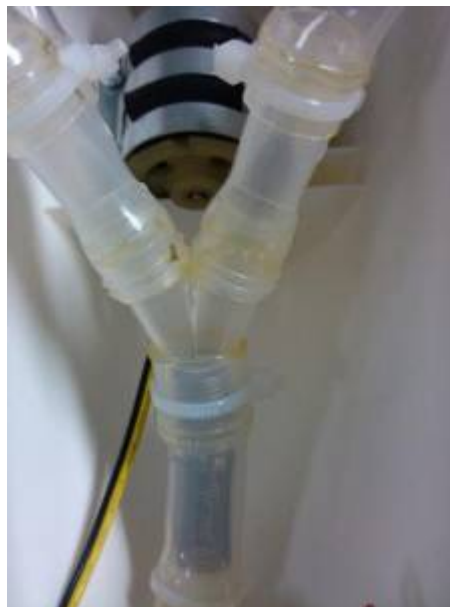
- ☒ general
- ☐ front
- ☐ rear
- ☐ right
- ☐ left
- ☐ top
- ☐ bottom



Details of: Non-return valves for all model

View:

- ☒ general
- ☐ front
- ☐ rear
- ☐ right
- ☐ left
- ☐ top
- ☐ bottom



This document is issued by the Company subject to its General Conditions of Service printed overleaf, available on request or accessible at www.sgs.com/terms_and_conditions.htm and, for electronic format documents, subject to Terms and Conditions for Electronic Documents at www.sgs.com/terms_e-document.htm. Attention is drawn to the limitation of liability, indemnification and jurisdiction issues defined therein. Any holder of this document is advised that information contained hereon reflects the Company's findings at the time of its intervention only and within the limits of Client's instructions, if any. The Company's sole responsibility is to its Client and this document does not exonerate parties to a transaction from exercising all their rights and obligations under the transaction documents. This document cannot be produced except in full, without prior written approval of the Company. Any unauthorized alteration, forgery or falsification of the content or appearance of this document is unlawful and offenders may be prosecuted to the fullest extent of the law.

SGS-CSTC Standards Technical Services Co., Ltd. - E&E Lab Guangzhou

198 Kezhu Road, Sciencetech Park, Guangzhou Economic & Technology Development District,
Guangzhou, Guangdong, China 510663

Tel.: +86 20 8215 5555 Fax: +86 20 8207 5058

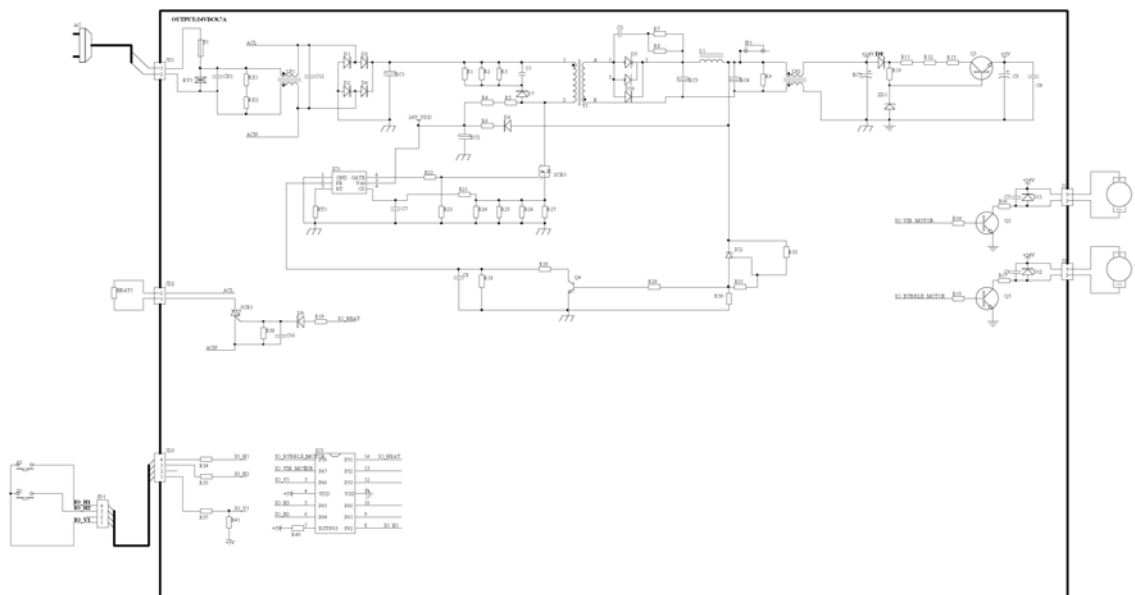
Compliance (Summary) Report

Report No.: GZES130200104401

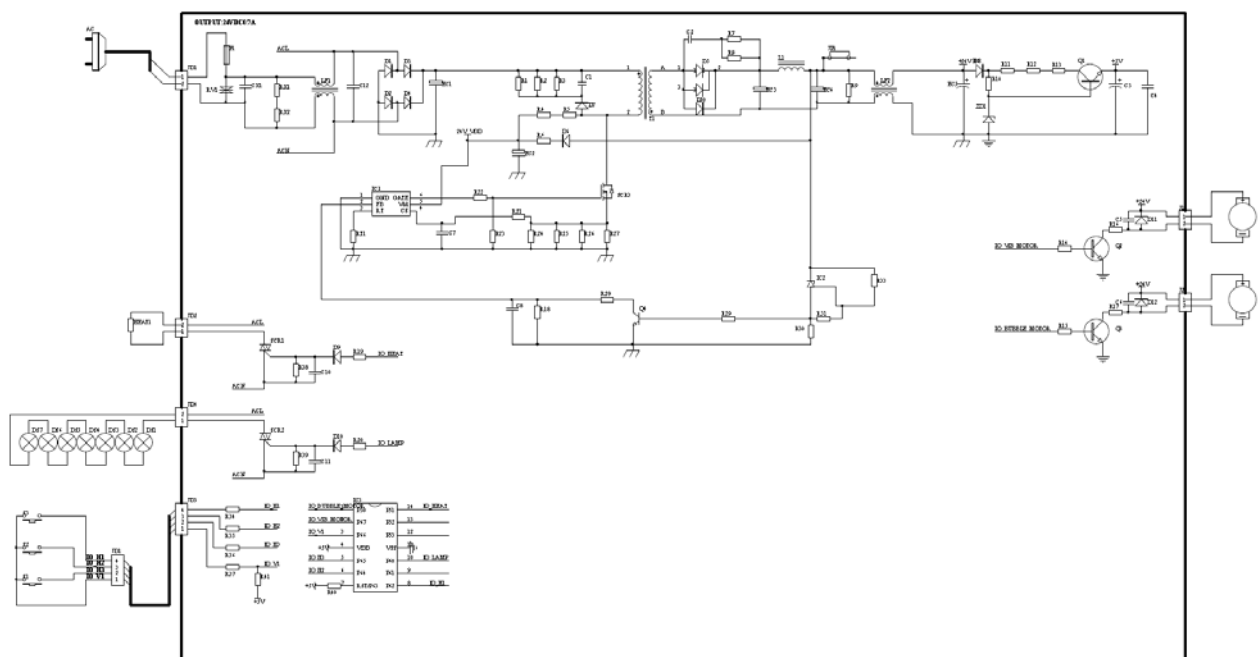
Date: 2013-06-05

ANNEX 3: Circuit diagram

Model: ELM-FS100-GB, ELMFS-150-EU



Model: CH-FS110-GB, 1471090



--- End of Report ---

This document is issued by the Company subject to its General Conditions of Service printed overleaf, available on request or accessible at www.sgs.com/terms_and_conditions.htm and, for electronic format documents, subject to Terms and Conditions for Electronic Documents at www.sgs.com/terms_e-document.htm. Attention is drawn to the limitation of liability, indemnification and jurisdiction issues defined therein. Any holder of this document is advised that information contained hereon reflects the Company's findings at the time of its intervention only and within the limits of Client's instructions, if any. The Company's sole responsibility is to its Client and this document does not exonerate parties to a transaction from exercising all their rights and obligations under the transaction documents. This document cannot be produced except in full, without prior written approval of the Company. Any unauthorized alteration, forgery or falsification of the content or appearance of this document is unlawful and offenders may be prosecuted to the fullest extent of the law.

SGS-CSTC Standards Technical Services Co., Ltd. - E&E Lab Guangzhou

198 Kezhu Road, Scientech Park, Guangzhou Economic & Technology Development District, Guangzhou, Guangdong, China 510663

Tel.: +86 20 8215 5555 Fax: +86 20 8207 5058