

Compliance (Summary) Report

Report No.: GZES100700146701

Date: 2010-10-21

Applicant: HoMedics Group Ltd.
HoMedics House, Somerhill Business Park, Five Oak Green Road, Tonbridge, Kent
TN11 0GP England

Manufacturer: —

Testing location/address: SGS-CSTC Standards Technical Services Co., Ltd. - E&E Lab Guangzhou
198 Kezhu Road, Sciencetech Park, Guangzhou Economic & Technology Development
District, Guangzhou, Guangdong, China 510663

The standards: BS EN / EN 60335-1: 2002 + A11: 2004 + A1: 2004 + A12: 2006 + A2: 2006 + A13: 2008
+ A14: 2010
BS EN / EN 60335-2-32: 2003 + A1: 2008
BS EN / EN 62233: 2008

Test item description: FOOT AND CALF MASSAGER

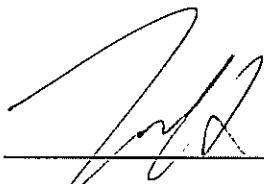
Trade Mark: **HOMEDICS®**

Test object / Model : FC-200H-EU, FC-200H-GB

Ratings: 220 V – 240 V, 50 Hz – 60 Hz, 55 W, Class II

Test result : In the opinion of SGS-CSTC the presented appliance was found to be in compliance
with the test specification as indicated in the details on the following pages.

Remark: P.O. No.: PC0000405



Jason Hoo
Reviewer
E&E Safety Laboratory



Kyle Zhang
Project Engineer

This document is issued by the Company subject to its General Conditions of Service printed overleaf, available on request or accessible at www.sgs.com/terms_and_conditions.htm and, for electronic format documents, subject to Terms and Conditions for Electronic Documents at www.sgs.com/terms_e-document.htm. Attention is drawn to the limitation of liability, indemnification and jurisdiction issues defined therein. Any holder of this document is advised that information contained hereon reflects the Company's findings at the time of its intervention only and within the limits of Client's instructions, if any. The Company's sole responsibility is to its Client and this document does not exonerate parties to a transaction from exercising all their rights and obligations under the transaction documents. This document cannot be produced except in full, without prior written approval of the Company. Any unauthorized alteration, forgery or falsification of the content or appearance of this document is unlawful and offenders may be prosecuted to the fullest extent of the law.

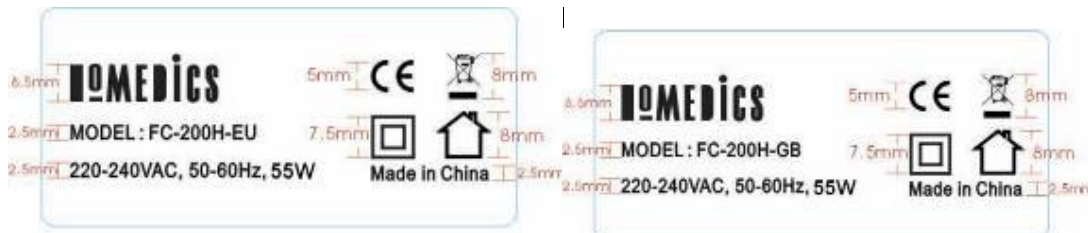
SGS-CSTC Standards Technical Services Co., Ltd. - E&E Lab Guangzhou
198 Kezhu Road, Sciencetech Park Guangzhou Economic & Technology Development District, Guangzhou, 510663
Guangdong, P.R. China
Tel.: +86 20 8215 5555 Fax: +86 20 8207 5058

Compliance (Summary) Report

Report No.: GZES100700146701

Date: 2010-10-21

Copy of marking plate



Summary of testing:

Tests according to the following standards were carried out :

BS EN / EN 60335-1: 2002 + A11: 2004 + A1: 2004 + A12: 2006 + A2: 2006 + A13: 2008 + A14: 2010

BS EN / EN 60335-2-32: 2003 + A1: 2008

BS EN / EN 62233: 2008

The submitted samples fulfil the requirements of the relevant standards.

Test item particulars..... : —

Classification of installation and use..... : Portable appliance

Supply connection..... : Non detachable power cord fitted with plug

Operating condition..... : Continuous

Possible test case verdicts:

- test case does not apply to the test object..... : N/A

- test object does meet the requirement..... : P (Pass)

- test object does not meet the requirement..... : F (Fail)

Testing

Date of receipt of test item..... : 2010-07-15

Date (s) of performance of tests..... : 2010-07-15 to 2010-10-21

General product information:

The massage appliance for household and indoor uses only.

The models FC-200H-EU and FC-200H-GB are identical except that FC-200H-EU uses EU plug, FC-200H-GB uses BS plug.

This document is issued by the Company subject to its General Conditions of Service printed overleaf, available on request or accessible at www.sgs.com/terms_and_conditions.htm and, for electronic format documents, subject to Terms and Conditions for Electronic Documents at www.sgs.com/terms_e-document.htm. Attention is drawn to the limitation of liability, indemnification and jurisdiction issues defined therein. Any holder of this document is advised that information contained hereon reflects the Company's findings at the time of its intervention only and within the limits of Client's instructions, if any. The Company's sole responsibility is to its Client and this document does not exonerate parties to a transaction from exercising all their rights and obligations under the transaction documents. This document cannot be produced except in full, without prior written approval of the Company. Any unauthorized alteration, forgery or falsification of the content or appearance of this document is unlawful and offenders may be prosecuted to the fullest extent of the law.

SGS-CSTC Standards Technical Services Co., Ltd. - E&E Lab Guangzhou
198 Kezhu Road, Sciencetech Park Guangzhou Economic & Technology Development District, Guangzhou, 510663
Guangdong, P.R. China

Tel.: +86 20 8215 5555 Fax: +86 20 8207 5058

Compliance (Summary) Report

Report No.: GZES100700146701

Date: 2010-10-21

BS EN / EN 60335-1 and BS EN / EN 60335-2-32		
Clause	Remarks	Verdict
7. Marking and instructions		P
8. Protection against access to live parts		P
9. Starting of motor-powered appliances		N/A
10. Power input and current	(see appended table)	P
11. Heating	(see appended table)	P
13. Leakage current and electric strength at operating temperature	(see appended table)	P
14. Transient overvoltages		N/A
15. Moisture resistance		P
16. Leakage current and electric strength	(see appended table)	P
17. Overload protection of transformer and associated circuits	(see appended table)	P
18. Endurance		N/A
19. Abnormal operation	(see appended table)	P
20. Stability and mechanical hazards	(see appended table)	P
21. Mechanical strength		P
22. Construction		P
23. Internal wiring		P
24. Components	(see appended table)	P
25. Supply connection and external flexible cords		P
26. Terminals for external conductors		P
27. Provisions for earthing		N/A
28. Screws and connections		P
29. Clearances, creepage distances and solid insulation	(see appended table)	P
30. Tracking to Resistance to heat, fire	(see appended table)	P
31. Resistance to rusting		P
32. Radiation, toxicity and similar hazards		P
Annex A Routine tests		N/A
Annex B Appliances powered by rechargeable batteries		N/A
Annex C Ageing test on motors		N/A
Annex D Thermal motor protectors		N/A
Annex E Needle flame test		P
Annex F Capacitors		N/A
Annex G Safety isolating transformers		N/A
Annex H Switches		N/A
Annex I Motors having basic insulation that is inadequate for the		N/A

This document is issued by the Company subject to its General Conditions of Service printed overleaf, available on request or accessible at www.sgs.com/terms_and_conditions.htm and, for electronic format documents, subject to Terms and Conditions for Electronic Documents at www.sgs.com/terms_e-document.htm. Attention is drawn to the limitation of liability, indemnification and jurisdiction issues defined therein. Any holder of this document is advised that information contained hereon reflects the Company's findings at the time of its intervention only and within the limits of Client's instructions, if any. The Company's sole responsibility is to its Client and this document does not exonerate parties to a transaction from exercising all their rights and obligations under the transaction documents. This document cannot be produced except in full, without prior written approval of the Company. Any unauthorized alteration, forgery or falsification of the content or appearance of this document is unlawful and offenders may be prosecuted to the fullest extent of the law.

Compliance (Summary) Report

Report No.: GZES100700146701

Date: 2010-10-21

rated voltage of the appliance		
Annex J Coated printed circuit boards		N/A
Annex K Overvoltage categories		P
Annex L Guidance for the measurement of clearances		P
Annex M Pollution degree		P
Annex N Proof tracking test		N/A
Annex O Selection and sequence of the tests of clause 30		P
Annex P Guidance for the application of this standard to appliances used in warm damp equable climates		N/A
Annex Q Sequence of tests for the evaluation of electronic circuits		P
Annex R Software evaluation		N/A

ANNEX EMF

	The Tested product also complies to the requirements of EN 62233: 2008		—
	Limit100%	Measured max.: 38,4 %	P

This document is issued by the Company subject to its General Conditions of Service printed overleaf, available on request or accessible at www.sgs.com/terms_and_conditions.htm and, for electronic format documents, subject to Terms and Conditions for Electronic Documents at www.sgs.com/terms_e-document.htm. Attention is drawn to the limitation of liability, indemnification and jurisdiction issues defined therein. Any holder of this document is advised that information contained hereon reflects the Company's findings at the time of its intervention only and within the limits of Client's instructions, if any. The Company's sole responsibility is to its Client and this document does not exonerate parties to a transaction from exercising all their rights and obligations under the transaction documents. This document cannot be produced except in full, without prior written approval of the Company. Any unauthorized alteration, forgery or falsification of the content or appearance of this document is unlawful and offenders may be prosecuted to the fullest extent of the law.

SGS-CSTC Standards Technical Services Co., Ltd. - E&E Lab Guangzhou
198 Kezhu Road, Sciencetech Park Guangzhou Economic & Technology Development District, Guangzhou, 510663
Guangdong, P.R. China
Tel.: +86 20 8215 5555 Fax: +86 20 8207 5058

Compliance (Summary) Report

Report No.: GZES100700146701

Date: 2010-10-21

ANNEX 1: Data Table

10.1	TABLE: Power input deviation					P
Input deviation of/at:		P rated (W)	P measured (W)	Dp	Required Dp	Remark
220 V – 240 V / 230 V, 50 Hz		55	54,4	-1,1%	+20%	—
220 V – 240 V / 230 V, 60 Hz		55	52,7	-4,2%	+20%	—
Only massage function(close heating function)		55	27,7	-49,6%	—	>50%
Remark: The deviation for motor-operated appliances applies for combined appliances if the power input of the motors is more than 50 % of the rated power input.						

11.8	TABLE: Heating test, thermocouples		P
	Test voltage (V) :	254,4	—
	Ambient (°C) :	t ₁ : 24,5 t ₂ : 24,7	—
Thermocouple locations		dt (K)	Max. dt (K)
Foot unit			
Power cord	19,5	50	
X capacitor surface	28,1	T100-25=75	
Dividing capacitor surface	26,5	T100-25=75	
Power PCB	33,6	120	
Internal wire	21,6	T80-25=55	
Transformer winding (YYPT48240900V) / Transformer bobbin	42,5	85(class 130) / For clause 30.1	
Transformer winding (GQPT-41120600V) / Transformer bobbin	31,2	80(class 120) / For clause 30.1	
Motor (WNRC-560SAP-21290-108VK) winding / motor bobbin / motor top cover	67,3	80(class 120) / For clause 30.1	
Massage head cover holder / ring holder	23,4	For clause 30.1	
Massage head cover (inside)	33,5	For clause 30.1	
Massage head cover (outside)	40,9	50 / for clause 30.1	
Appliance bottom enclosure (inside)	50,2	For clause 30.1	
Calf unit			
PCB controller	9,9	120	
Appliance back cover	7,3	For clause 30.1	

This document is issued by the Company subject to its General Conditions of Service printed overleaf, available on request or accessible at www.sgs.com/terms_and_conditions.htm and, for electronic format documents, subject to Terms and Conditions for Electronic Documents at www.sgs.com/terms_e-document.htm. Attention is drawn to the limitation of liability, indemnification and jurisdiction issues defined therein. Any holder of this document is advised that information contained hereon reflects the Company's findings at the time of its intervention only and within the limits of Client's instructions, if any. The Company's sole responsibility is to its Client and this document does not exonerate parties to a transaction from exercising all their rights and obligations under the transaction documents. This document cannot be produced except in full, without prior written approval of the Company. Any unauthorized alteration, forgery or falsification of the content or appearance of this document is unlawful and offenders may be prosecuted to the fullest extent of the law.

SGS-CSTC Standards Technical Services Co., Ltd. - E&E Lab Guangzhou
198 Kezhu Road, Sciencetech Park Guangzhou Economic & Technology Development District, Guangzhou, 510663
Guangdong, P.R. China
Tel.: +86 20 8215 5555 Fax: +86 20 8207 5058

Compliance (Summary) Report

Report No.: GZES100700146701

Date: 2010-10-21

Motor winding (WNRC-390SM-17220-76VK)	48,2	80 (class 120)
Motor winding (WNRC-560SAP-19305-80VD)	32,9	65 (class 105)
PCB for massage head	94,1	120
Massage head cover (inside)	51,7	For clause 30.1
Massage surface (accessible massage)	8,9	50
Control panel surface	6,2	60
Control panel (inside)	8,3	For clause 30.1
Control PCB back cover (inside)	11,0	For clause 30.1
Remote controller surface	5,8	60
PCB for Remote controller	2,8	120
Test floor	16,4	65

13.2	TABLE: Leakage current		P
	Heating appliances: 1.15 x rated input	—	—
	Motor-operated and combined appliances: 1.06 x rated voltage	254,4 V	—
Leakage current between		I (mA)	Max. allowed I (mA)
		L	N
Live part and accessible plastic surface		0,01	0,01
			0,25

13.3	TABLE: Electric strength		P
Test voltage applied between:		Voltage (V)	Breakdown (Yes/No)
Live part and accessible plastic surface		3000	No

16.2	TABLE: Leakage current		P
	Single phase appliances: 1.06 x rated voltage	254,4 V	—
	Three phase appliances 1.06 x rated voltage divided by $\sqrt{3}$:	—	—
Leakage current between		I (mA)	Max. allowed I (mA)
Live part and accessible plastic surface		0,01	0,25

16.3	TABLE: Electric strength		P
------	--------------------------	--	---

This document is issued by the Company subject to its General Conditions of Service printed overleaf, available on request or accessible at www.sgs.com/terms_and_conditions.htm and, for electronic format documents, subject to Terms and Conditions for Electronic Documents at www.sgs.com/terms_e-document.htm. Attention is drawn to the limitation of liability, indemnification and jurisdiction issues defined therein. Any holder of this document is advised that information contained hereon reflects the Company's findings at the time of its intervention only and within the limits of Client's instructions, if any. The Company's sole responsibility is to its Client and this document does not exonerate parties to a transaction from exercising all their rights and obligations under the transaction documents. This document cannot be produced except in full, without prior written approval of the Company. Any unauthorized alteration, forgery or falsification of the content or appearance of this document is unlawful and offenders may be prosecuted to the fullest extent of the law.

SGS-CSTC Standards Technical Services Co., Ltd. - E&E Lab Guangzhou
198 Kezhu Road, Sciencetech Park Guangzhou Economic & Technology Development District, Guangzhou, 510663
Guangdong, P.R. China
Tel.: +86 20 8215 5555 Fax: +86 20 8207 5058

Compliance (Summary) Report

Report No.: GZES100700146701

Date: 2010-10-21

Test voltage applied between:	Voltage (V)	Breakdown (Yes/No)
Live part and accessible plastic surface	3000	No

17	TABLE: Overload protection, temperature rise	P
Temperature rise of part/at:	T (°C)	Max. T (°C)
Transformer winding (YYPT48240900V)	112,7	225
Transformer winding (GQPT-41120600V)	89,4	215

19.13	TABLE: Abnormal operation, temperature rises					P
Thermocouple locations	dT (K)				Max. dT (K)	
	19.2	19.3	19.4	19.7		
Foot unit						
Power cord	17,2	21,8	21,6	12,9	150	
Massage head cover	52,7	44,6	90,0	36,2	For clause 30.1	
Appliance bottom enclosure	43,6	64,0	62,8	49,7	For clause 30.1	
Foot massage motor	—	—	—	93,4	190	
Motor top cover	58,2	82,0	89,4	93,4	For clause 30.1	
Calf unit						
Appliance back enclosure	6,2	6,4	5,3	12,6	For clause 30.1	
Massage head cover	37,2	49,5	33,6	58,3	For clause 30.1	
Motor winding (WNRC-390SM-17220-76VK)	—	—	—	64,7	175	
Motor winding (WNRC-560SAP-19305-80VD)	—	—	—	61,8	125	
Motor housing	39,0	57,1	50,2	64,7	For clause 30.1	
Control panel (inside)	7,0	7,4	6,4	3,1	For clause 30.1	
Control PCB back cover	8,8	10,2	8,9	3,5	For clause 30.1	
Test floor	14,7	17,6	15,2	10,8	150	

24.1	TABLE: Components					P
Object / part No.	Manufacturer/ trademark	Type / model	Technical data	Standard	Mark(s) of conformity	

This document is issued by the Company subject to its General Conditions of Service printed overleaf, available on request or accessible at www.sgs.com/terms_and_conditions.htm and, for electronic format documents, subject to Terms and Conditions for Electronic Documents at www.sgs.com/terms_e-document.htm. Attention is drawn to the limitation of liability, indemnification and jurisdiction issues defined therein. Any holder of this document is advised that information contained hereon reflects the Company's findings at the time of its intervention only and within the limits of Client's instructions, if any. The Company's sole responsibility is to its Client and this document does not exonerate parties to a transaction from exercising all their rights and obligations under the transaction documents. This document cannot be produced except in full, without prior written approval of the Company. Any unauthorized alteration, forgery or falsification of the content or appearance of this document is unlawful and offenders may be prosecuted to the fullest extent of the law.

SGS-CSTC Standards Technical Services Co., Ltd. - E&E Lab Guangzhou
198 Kezhu Road, Sciencetech Park Guangzhou Economic & Technology Development District, Guangzhou, 510663
Guangdong, P.R. China
Tel.: +86 20 8215 5555 Fax: +86 20 8207 5058

Compliance (Summary) Report

Report No.: GZES100700146701

Date: 2010-10-21

Plug	Kenic Electric Mfg, Co., Ltd.	KE-21	AC 250 V ; 2,5 A	EN 50075	VDE 97182
Power cord	Kenic Electric Mfg, Co., Ltd.	H05VVH2-F 60227 IEC 53	2 x 0,75 mm ²	DIN VDE 0281-5	VDE 103853
X capacitor	Shenzhen Su Rong Capacitors Co., Ltd.	MPX/MKP	AC 280 V; X2; 0,22 uF;40/100/21	EN 60384-14	VDE 40008924
X capacitor (alternative)	Carli Electronics Co., Ltd.	MPX	AC 275 V; X2; 0,22 uF;40/100/21	EN 60384-14	VDE 40008520
Fuse	Walter Electronic Co., Ltd.	SGP	AC 250 V; 1,5 A	EN 60335-1 EN 60335-2-32	Tested with appliance UL E56092
Dividing Capacitor	Shenzhen Su Rong Capacitors Co., Ltd.	MPX/MKP	AC 280 V; X2; 1,2 uF; 40/100/21	EN 60384-14	VDE 40008924
Dividing Capacitor (alternative)	Carli Electronics Co., Ltd.	MPX	AC 275 V; X2; 1,2 uF; 40/100/21	EN 60384-14	VDE 40008520
Internal wire	ZI LI ELECTRONIC CO LTD	1007	22 AWG, 300 V, 80°C	EN 60335-1 EN 60335-2-32	Tested with appliance UL E254016
Internal wire	SHUN HUI ELECTRONIC CO LTD	2464	26 AWG, 300 V, 80°C, Insulation thickness > 1 mm	EN 60335-1 EN 60335-2-32	Tested with appliance UL E251672
Transformer	GANGQI(DONGGU AN) ELECTRONIC CO., LTD	GQPT- 41120600V	I/P: 230 VAC, 50 Hz O/P: 12 VAC, 600 mA, Class 130	EN 60335-1 EN 60335-2-32	Tested with appliance
Thermal link for Transformer	AUPO(XIAMEN) ELECTRONICSLTD	—	250 V, 2 A, 130°C	EN 60335-1 EN 60335-2-32	Tested with appliance
Transformer	GANGQI(DONGGU AN) ELECTRONIC CO., LTD	YYPT- 48240900V	I/P: 230 VAC, 50 Hz O/P: 24 VAC, 900mA, Class 130	EN 60335-1 EN 60335-2-32	Tested with appliance
Thermal link for Transformer	AUPO(XIAMEN) ELECTRONICSLTD	—	250 V, 2A, 125°C	EN 60335-1 EN 60335-2-32	Tested with appliance
Temperature limiter for massage head	Jiangyin Tonghui Electronics Co., Ltd.	TH-B2D	AC 250 V, Tf: 80 °C, 850°C	EN 60335-1 EN 60335-2-32 EN 60730-1 EN 60730-2-2	Tested with appliance VDE 40020604

This document is issued by the Company subject to its General Conditions of Service printed overleaf, available on request or accessible at www.sgs.com/terms_and_conditions.htm and, for electronic format documents, subject to Terms and Conditions for Electronic Documents at www.sgs.com/terms_e-document.htm. Attention is drawn to the limitation of liability, indemnification and jurisdiction issues defined therein. Any holder of this document is advised that information contained hereon reflects the Company's findings at the time of its intervention only and within the limits of Client's instructions, if any. The Company's sole responsibility is to its Client and this document does not exonerate parties to a transaction from exercising all their rights and obligations under the transaction documents. This document cannot be produced except in full, without prior written approval of the Company. Any unauthorized alteration, forgery or falsification of the content or appearance of this document is unlawful and offenders may be prosecuted to the fullest extent of the law.

SGS-CSTC Standards Technical Services Co., Ltd. - E&E Lab Guangzhou

198 Kezhu Road, Sciencetech Park Guangzhou Economic & Technology Development District, Guangzhou, 510663
Guangdong, P.R. China

Tel.: +86 20 8215 5555 Fax: +86 20 8207 5058

Compliance (Summary) Report

Report No.: GZES100700146701

Date: 2010-10-21

Foot massage motor	Shen Zhen Dong Fu Chang Motor Co., Ltd	WNRC-560SAP-21290-108VK	24 VDC; 0,13 A; Class 120	EN 60335-1 EN 60335-2-32	Tested with appliance
Thermal link for Foot massage motor	Matsushita Electric Ind. Co. Ltd.	F115	AC 250 V, 1 A, 115°C	EN 60691	VDE 40012230
Up-down Motor for calf unit	Shen Zhen Dong Fu Chang Motor Co., Ltd	WNRC-390SM-17220-76VK	12 VDC; 0,14 A	EN 60335-1 EN 60335-2-32	Tested with appliance
Vibrating Motor for calf unit	Shen Zhen Dong Fu Chang Motor Co., Ltd	WNRC-560SAP-19305-80VD	24 VDC; 0,12 A	EN 60335-1 EN 60335-2-32	Tested with appliance
PCB	MEI ZHOU LI YU DA CRICUIT BOARD CO LTD	LYD-2	V-0	EN 60335-1 EN 60335-2-32	Tested with appliance UL E320265
Massage head cover	SAMSUNG BENERAL CHEMICACS CO LTD	HJ730+	PP, HB	EN 60335-1 EN 60335-2-32	Tested with appliance UL E140331
Foot unit top cover	CHI MEI CORPORATION	PA-707	ABS, HB	EN 60335-1 EN 60335-2-32	Tested with appliance UL E56070
Appliance bottom cover	LCY CHEMICAL CORP	6331	PP, HB	EN 60335-1 EN 60335-2-32	Tested with appliance UL E85783
Appliance top cover	CHI MEI CORPORATION	PA-765(+)	ABS, HB	EN 60335-1 EN 60335-2-32	Tested with appliance UL E56070

29.1	TABLE: Clearances					P
	Overvoltage category.... :	II				—
		Type of insulation:				
Rated impulse voltage (V):	Min. cl (mm)	Basic (mm)	Functional (mm)	Supplementary (mm)	Reinforced (mm)	Verdict / Remark
330	0,5*	—	—	—	—	N/A
500	0,5*	—	—	—	—	N/A
800	0,5*	—	—	—	—	N/A
1500	0,5*/**	—	—	—	—	N/A

This document is issued by the Company subject to its General Conditions of Service printed overleaf, available on request or accessible at www.sgs.com/terms_and_conditions.htm and, for electronic format documents, subject to Terms and Conditions for Electronic Documents at www.sgs.com/terms_e-document.htm. Attention is drawn to the limitation of liability, indemnification and jurisdiction issues defined therein. Any holder of this document is advised that information contained hereon reflects the Company's findings at the time of its intervention only and within the limits of Client's instructions, if any. The Company's sole responsibility is to its Client and this document does not exonerate parties to a transaction from exercising all their rights and obligations under the transaction documents. This document cannot be produced except in full, without prior written approval of the Company. Any unauthorized alteration, forgery or falsification of the content or appearance of this document is unlawful and offenders may be prosecuted to the fullest extent of the law.

SGS-CSTC Standards Technical Services Co., Ltd. - E&E Lab Guangzhou
198 Kezhu Road, Sciencetech Park Guangzhou Economic & Technology Development District, Guangzhou, 510663
Guangdong, P.R. China

Tel.: +86 20 8215 5555 Fax: +86 20 8207 5058

Compliance (Summary) Report

Report No.: GZES100700146701

Date: 2010-10-21

2500	1,5**	—	a) 5,2 mm	b) 13,5 mm	—	P / a) B/W L&N of supply in Main PCB b) B/W Internal wire and accessible plastic enclosure
4000	3,0**	—	—	—	c) 7,8 mm	P / c) B/W Live part in control PCB and accessible surface
6000	5,5**	—	—	—	—	N/A
8000	8,0**	—	—	—	—	N/A
10000	11,0**	—	—	—	—	N/A
Remark:						
*) The value is increased to 0,8mm for pollution degree 3 **) If the construction is affected by wear, distortion, movement of the parts or during assembly, the value is increased by 0,5 mm						

29.2	TABLE: Creepage distances, basic, supplementary and reinforced insulation										P
Working voltage (V)	Creepage distance (mm) Pollution degree							—			
	1	2			3			Type of insulation			—
		Material group			Material group			—			—
		I	II	IIIa/IIIb	I	II	IIIa/IIIb	B ^{*)}	S ^{*)}	R ^{*)}	Verdict
≤50	0,2	0,6	0,9	1,2	1,5	1,7	1,9		—	—	N/A
≤50	0,2	0,6	0,9	1,2	1,5	1,7	1,9	—		—	N/A
≤50	0,4	1,2	1,8	2,4	3,0	3,4	3,8	—	—		N/A
>50 and ≤125	0,3	0,8	1,1	1,5	1,9	2,1	2,4		—	—	N/A
>50 and ≤125	0,3	0,8	1,1	1,5	1,9	2,1	2,4	—		—	N/A
>50 and ≤125	0,6	1,6	2,2	3,0	3,8	4,2	4,8	—	—		N/A
>125 and ≤250	0,6	1,3	1,8	2,5	3,2	3,6	4,0		—	—	N/A
>125 and ≤250	0,6	1,3	1,8	2,5	3,2	3,6	4,0	—	13,5 mm	—	P(b)
>125 and ≤250	1,2	2,6	3,6	5,0	6,4	7,2	8,0	—	—	9,5 mm	P(c)
>250 and ≤400	1,0	2,0	2,8	4,0	5,0	5,6	6,3	—	—	—	N/A
>250 and ≤400	1,0	2,0	2,8	4,0	5,0	5,6	6,3	—		—	N/A
>250 and ≤400	2,0	4,0	5,6	8,0	10,0	11,2	12,6	—	—		N/A

This document is issued by the Company subject to its General Conditions of Service printed overleaf, available on request or accessible at www.sgs.com/terms_and_conditions.htm and, for electronic format documents, subject to Terms and Conditions for Electronic Documents at www.sgs.com/terms_e-document.htm. Attention is drawn to the limitation of liability, indemnification and jurisdiction issues defined therein. Any holder of this document is advised that information contained hereon reflects the Company's findings at the time of its intervention only and within the limits of Client's instructions, if any. The Company's sole responsibility is to its Client and this document does not exonerate parties to a transaction from exercising all their rights and obligations under the transaction documents. This document cannot be produced except in full, without prior written approval of the Company. Any unauthorized alteration, forgery or falsification of the content or appearance of this document is unlawful and offenders may be prosecuted to the fullest extent of the law.

SGS-CSTC Standards Technical Services Co., Ltd. - E&E Lab Guangzhou
198 Kezhu Road, Sciencetech Park Guangzhou Economic & Technology Development District, Guangzhou, 510663
Guangdong, P.R. China
Tel.: +86 20 8215 5555 Fax: +86 20 8207 5058

Compliance (Summary) Report

Report No.: GZES100700146701

Date: 2010-10-21

>400 and ≤500	1,3	2,5	3,6	5,0	6,3	7,1	8,0		—	—	N/A
>400 and ≤500	1,3	2,5	3,6	5,0	6,3	7,1	8,0	—		—	N/A
>400 and ≤500	2,6	5,0	7,2	10,0	12,6	14,2	16,0	—	—		N/A
>500 and ≤800	1,8	3,2	4,5	6,3	8,0	9,0	10,0		—	—	N/A
>500 and ≤800	1,8	3,2	4,5	6,3	8,0	9,0	10,0	—		—	N/A
>500 and ≤800	3,6	6,4	9,0	12,6	16,0	18,0	20,0	—	—		N/A
>800 and ≤1000	2,4	4,0	5,6	8,0	10,0	11,0	12,5		—	—	N/A
>800 and ≤1000	2,4	4,0	5,6	8,0	10,0	11,0	12,5	—		—	N/A
>800 and ≤1000	4,8	8,0	11,2	16,0	20,0	22,0	25,0	—	—		N/A
>1000 and ≤1250	3,2	5,0	7,1	10,0	12,5	14,0	16,0		—	—	N/A
>1000 and ≤1250	3,2	5,0	7,1	10,0	12,5	14,0	16,0	—		—	N/A
>1000 and ≤1250	6,4	10,0	14,2	20,0	25,0	28,0	32,0	—	—		N/A
>1250 and ≤1600	4,2	6,3	9,0	12,5	16,0	18,0	20,0		—	—	N/A
>1250 and ≤1600	4,2	6,3	9,0	12,5	16,0	18,0	20,0	—		—	N/A
>1250 and ≤1600	8,4	12,6	18,0	25,0	32,0	36,0	40,0	—	—		N/A
>1600 and ≤2000	5,6	8,0	11,0	16,0	20,0	22,0	25,0		—	—	N/A
>1600 and ≤2000	5,6	8,0	11,0	16,0	20,0	22,0	25,0	—		—	N/A
>1600 and ≤2000	11,2	16,0	22,0	32,0	40,0	44,0	50,0	—	—		N/A

*) B=Basic, S=Supplementary and R=Reinforced

29.2	TABLE: Creepage distances, functional insulation							P
Working voltage (V)	Creepage distance (mm) Pollution degree							—
	1	2		3			—	
		Material group			Material group			—
		I	II	IIIa/IIIb	I	II	IIIa/IIIb	Verdict / Remark
≤50	0,2	0,6	0,8	1,1	1,4	1,6	1,8	N/A
>50 and ≤125	0,3	0,7	1,0	1,4	1,8	2,0	2,2	N/A
>125 and ≤250	0,4	1,0	1,4	2,0	2,5	2,8	3,2	P(1) 5,2 mm
>250 and ≤400	0,8	1,6	2,2	3,2	4,0	4,5	5,0	N/A
>400 and ≤500	1,0	2,0	2,8	4,0	5,0	5,6	6,3	N/A
>500 and ≤800	1,8	3,2	4,5	6,3	8,0	9,0	10,0	N/A
>800 and ≤1000	2,4	4,0	5,6	8,0	10,0	11,0	12,5	N/A

This document is issued by the Company subject to its General Conditions of Service printed overleaf, available on request or accessible at www.sgs.com/terms_and_conditions.htm and, for electronic format documents, subject to Terms and Conditions for Electronic Documents at www.sgs.com/terms_e-document.htm. Attention is drawn to the limitation of liability, indemnification and jurisdiction issues defined therein. Any holder of this document is advised that information contained hereon reflects the Company's findings at the time of its intervention only and within the limits of Client's instructions, if any. The Company's sole responsibility is to its Client and this document does not exonerate parties to a transaction from exercising all their rights and obligations under the transaction documents. This document cannot be produced except in full, without prior written approval of the Company. Any unauthorized alteration, forgery or falsification of the content or appearance of this document is unlawful and offenders may be prosecuted to the fullest extent of the law.

SGS-CSTC Standards Technical Services Co., Ltd. - E&E Lab Guangzhou
198 Kezhu Road, Sciencetech Park Guangzhou Economic & Technology Development District, Guangzhou, 510663
Guangdong, P.R. China

Tel.: +86 20 8215 5555 Fax: +86 20 8207 5058

Compliance (Summary) Report

Report No.: GZES100700146701

Date: 2010-10-21

>1000 and ≤1250	3,2	5,0	7,1	10,0	12,5	14,0	16,0	N/A
>1250 and ≤1600	4,2	6,3	9,0	12,5	16,0	18,0	20,0	N/A
>1600 and ≤2000	5,6	8,0	11,0	16,0	20,0	22,0	25,0	N/A

30.1	TABLE: Ball pressure			P
Part		Test temperature (°C)	Impression diameter (mm)	Allowed impression diameter (mm)
Foot unit				
Transformer bobbin (GQPT-41120600V)		125	1,2	2,0
Transformer bobbin (YYPT-48240900V)		125	1,1	2,0
Foot unit top cover / ring holder		125	1,2	2,0
Massage head cover holder		125	1,3	2,0
Appliance bottom cover		100	1,9	2,0
Motor bobbin (WNRC-560SAP-21290-108VK)		125	1,3	2,0
Calf unit				
Control PCB back cover		75	0,3	2,0
Motor bobbin (WNRC-390SM-17220-76VK)		125	1,3	2,0
Motor bobbin (WNRC-560SAP-19305-80VD)		125	1,5	2,0

30.2	TABLE: Glow-wire test			P
Part		Test temperature (°C)	result / observation	Remark
Appliance bottom cover		650	Pass / no flame, no glowing drops.	—
Control PCB back cover		650	Pass / no flame, no glowing drops.	—
Motor bobbin (WNRC-390SM-17220-76VK)		650	Pass / no flame, no glowing drops.	—
Motor bobbin (WNRC-560SAP-19305-80VD)		650	Pass / no flame, no glowing drops.	—
Motor bobbin (WNRC-560SAP-21290-108VK)		650	Pass / no flame, no glowing drops.	—
Transformer bobbin (GQPT-41120600V)		650	Pass / no flame, no glowing drops.	—
Transformer bobbin (YYPT-48240900V)		650	Pass / no flame, no glowing drops.	—

This document is issued by the Company subject to its General Conditions of Service printed overleaf, available on request or accessible at www.sgs.com/terms_and_conditions.htm and, for electronic format documents, subject to Terms and Conditions for Electronic Documents at www.sgs.com/terms_e-document.htm. Attention is drawn to the limitation of liability, indemnification and jurisdiction issues defined therein. Any holder of this document is advised that information contained hereon reflects the Company's findings at the time of its intervention only and within the limits of Client's instructions, if any. The Company's sole responsibility is to its Client and this document does not exonerate parties to a transaction from exercising all their rights and obligations under the transaction documents. This document cannot be produced except in full, without prior written approval of the Company. Any unauthorized alteration, forgery or falsification of the content or appearance of this document is unlawful and offenders may be prosecuted to the fullest extent of the law.

SGS-CSTC Standards Technical Services Co., Ltd. - E&E Lab Guangzhou
198 Kezhu Road, Sciencetech Park Guangzhou Economic & Technology Development District, Guangzhou, 510663
Guangdong, P.R. China

Tel.: +86 20 8215 5555 Fax: +86 20 8207 5058

Page 12 of 30

Compliance (Summary) Report

Report No.: GZES100700146701

Date: 2010-10-21

Massage head cover for foot unit	550	Pass / no flame, no glowing drops.	—
Massage head cover for calf unit	550	Pass / no flame, no glowing drops.	—
Control PCB back cover	550	Pass / no flame, no glowing drops.	—
Appliance bottom cover	550	Pass / no flame, no glowing drops.	—
Foot unit top cover / ring holder	650	Pass / no flame, no glowing drops.	—

This document is issued by the Company subject to its General Conditions of Service printed overleaf, available on request or accessible at www.sgs.com/terms_and_conditions.htm and, for electronic format documents, subject to Terms and Conditions for Electronic Documents at www.sgs.com/terms_e-document.htm. Attention is drawn to the limitation of liability, indemnification and jurisdiction issues defined therein. Any holder of this document is advised that information contained hereon reflects the Company's findings at the time of its intervention only and within the limits of Client's instructions, if any. The Company's sole responsibility is to its Client and this document does not exonerate parties to a transaction from exercising all their rights and obligations under the transaction documents. This document cannot be produced except in full, without prior written approval of the Company. Any unauthorized alteration, forgery or falsification of the content or appearance of this document is unlawful and offenders may be prosecuted to the fullest extent of the law.

SGS-CSTC Standards Technical Services Co., Ltd. - E&E Lab Guangzhou
 198 Kezhu Road, Sciencetech Park Guangzhou Economic & Technology Development District, Guangzhou, 510663
 Guangdong, P.R. China

Tel.: +86 20 8215 5555 Fax: +86 20 8207 5058

Page 13 of 30

Compliance (Summary) Report

Report No.: GZES100700146701

Date: 2010-10-21

ANNEX 2: Photo documentation

Details of: FC-200H-EU

View:

☐ general

☒ front

☐ rear

☐ right

☐ left

☐ top

☐ bottom



Details of: FC-200H-EU

View:

☐ general

☐ front

☒ rear

☐ right

☐ left

☐ top

☐ bottom



This document is issued by the Company subject to its General Conditions of Service printed overleaf, available on request or accessible at www.sgs.com/terms_and_conditions.htm and, for electronic format documents, subject to Terms and Conditions for Electronic Documents at www.sgs.com/terms_e-document.htm. Attention is drawn to the limitation of liability, indemnification and jurisdiction issues defined therein. Any holder of this document is advised that information contained hereon reflects the Company's findings at the time of its intervention only and within the limits of Client's instructions, if any. The Company's sole responsibility is to its Client and this document does not exonerate parties to a transaction from exercising all their rights and obligations under the transaction documents. This document cannot be produced except in full, without prior written approval of the Company. Any unauthorized alteration, forgery or falsification of the content or appearance of this document is unlawful and offenders may be prosecuted to the fullest extent of the law.

Compliance (Summary) Report

Report No.: GZES100700146701

Date: 2010-10-21

Details of: FC-200H-EU

View:

☐ general

☐ front

☐ rear

☒ right

☐ left

☐ top

☐ bottom



Details of: Control panel

View:

☒ general

☐ front

☐ rear

☐ right

☐ left

☐ top

☐ bottom



This document is issued by the Company subject to its General Conditions of Service printed overleaf, available on request or accessible at www.sgs.com/terms_and_conditions.htm and, for electronic format documents, subject to Terms and Conditions for Electronic Documents at www.sgs.com/terms_e-document.htm. Attention is drawn to the limitation of liability, indemnification and jurisdiction issues defined therein. Any holder of this document is advised that information contained hereon reflects the Company's findings at the time of its intervention only and within the limits of Client's instructions, if any. The Company's sole responsibility is to its Client and this document does not exonerate parties to a transaction from exercising all their rights and obligations under the transaction documents. This document cannot be produced except in full, without prior written approval of the Company. Any unauthorized alteration, forgery or falsification of the content or appearance of this document is unlawful and offenders may be prosecuted to the fullest extent of the law.

SGS-CSTC Standards Technical Services Co., Ltd. - E&E Lab Guangzhou
198 Kezhu Road, Sciencetech Park Guangzhou Economic & Technology Development District, Guangzhou, 510663
Guangdong, P.R. China

Tel.: +86 20 8215 5555 Fax: +86 20 8207 5058

Page 15 of 30

Compliance (Summary) Report

Report No.: GZES100700146701

Date: 2010-10-21

Details of: Foot unit Inside view

View:

☒ general

☐ front

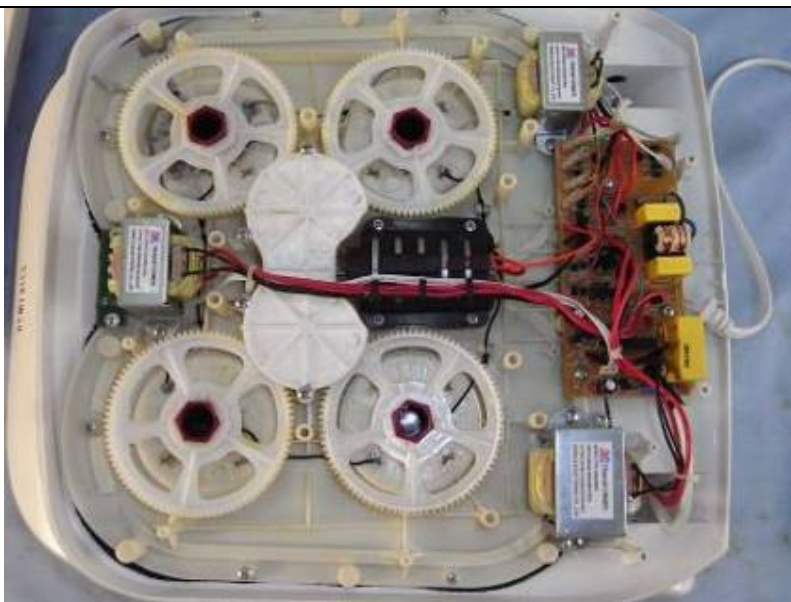
☐ rear

☐ right

☐ left

☐ top

☐ bottom



Details of: Foot unit bottom cover

View:

☒ general

☐ front

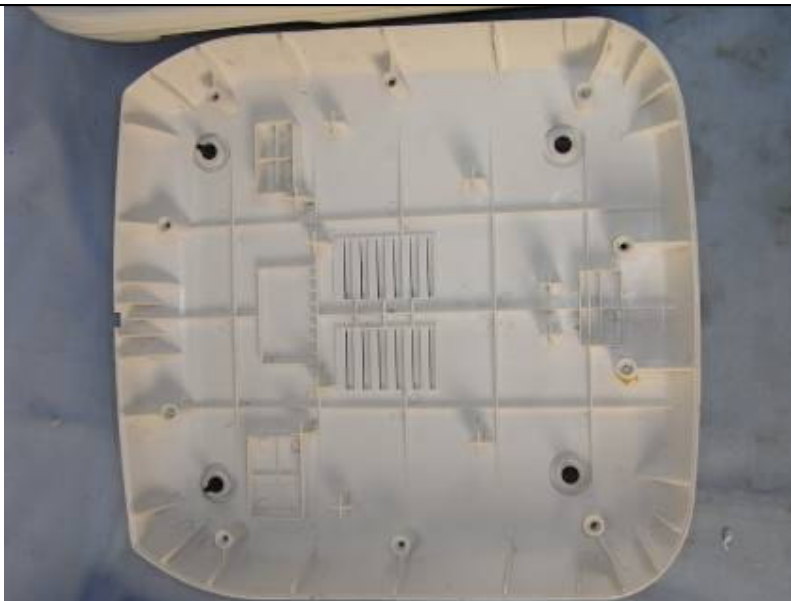
☐ rear

☐ right

☐ left

☐ top

☐ bottom



This document is issued by the Company subject to its General Conditions of Service printed overleaf, available on request or accessible at www.sgs.com/terms_and_conditions.htm and, for electronic format documents, subject to Terms and Conditions for Electronic Documents at www.sgs.com/terms_e-document.htm. Attention is drawn to the limitation of liability, indemnification and jurisdiction issues defined therein. Any holder of this document is advised that information contained hereon reflects the Company's findings at the time of its intervention only and within the limits of Client's instructions, if any. The Company's sole responsibility is to its Client and this document does not exonerate parties to a transaction from exercising all their rights and obligations under the transaction documents. This document cannot be produced except in full, without prior written approval of the Company. Any unauthorized alteration, forgery or falsification of the content or appearance of this document is unlawful and offenders may be prosecuted to the fullest extent of the law.

Compliance (Summary) Report

Report No.: GZES100700146701

Date: 2010-10-21

Details of: Foot unit massage platform

View:

☐ general

☐ front

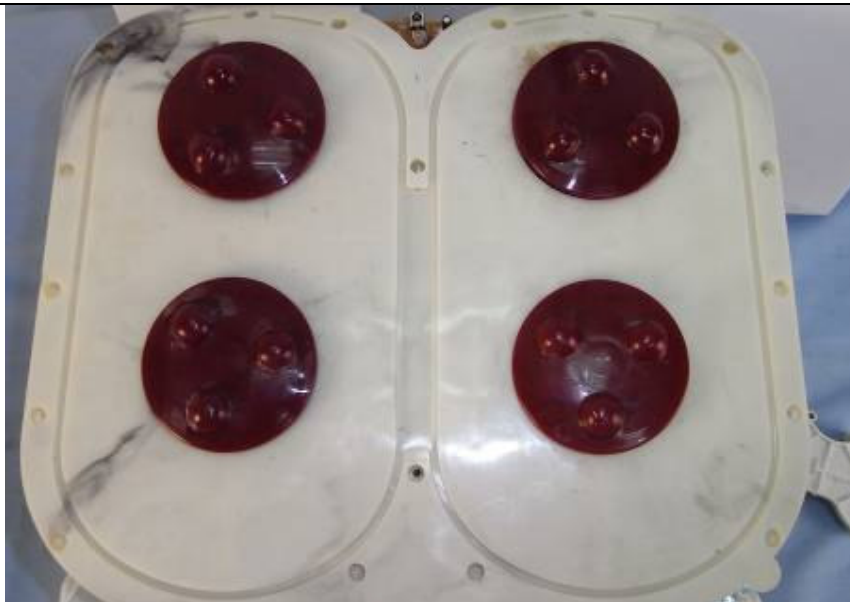
☒ rear

☐ right

☐ left

☐ top

☐ bottom



Details of: Motor (WNRC-560SAP-21290-108VK)

View:

☐ general

☒ front

☐ rear

☐ right

☐ left

☐ top

☐ bottom



This document is issued by the Company subject to its General Conditions of Service printed overleaf, available on request or accessible at www.sgs.com/terms_and_conditions.htm and, for electronic format documents, subject to Terms and Conditions for Electronic Documents at www.sgs.com/terms_e-document.htm. Attention is drawn to the limitation of liability, indemnification and jurisdiction issues defined therein. Any holder of this document is advised that information contained hereon reflects the Company's findings at the time of its intervention only and within the limits of Client's instructions, if any. The Company's sole responsibility is to its Client and this document does not exonerate parties to a transaction from exercising all their rights and obligations under the transaction documents. This document cannot be produced except in full, without prior written approval of the Company. Any unauthorized alteration, forgery or falsification of the content or appearance of this document is unlawful and offenders may be prosecuted to the fullest extent of the law.

Compliance (Summary) Report

Report No.: GZES100700146701

Date: 2010-10-21

Details of: Thermal link for motor (WNRC-560SAP-21290-108VK)

View:

☐ general

☐ front

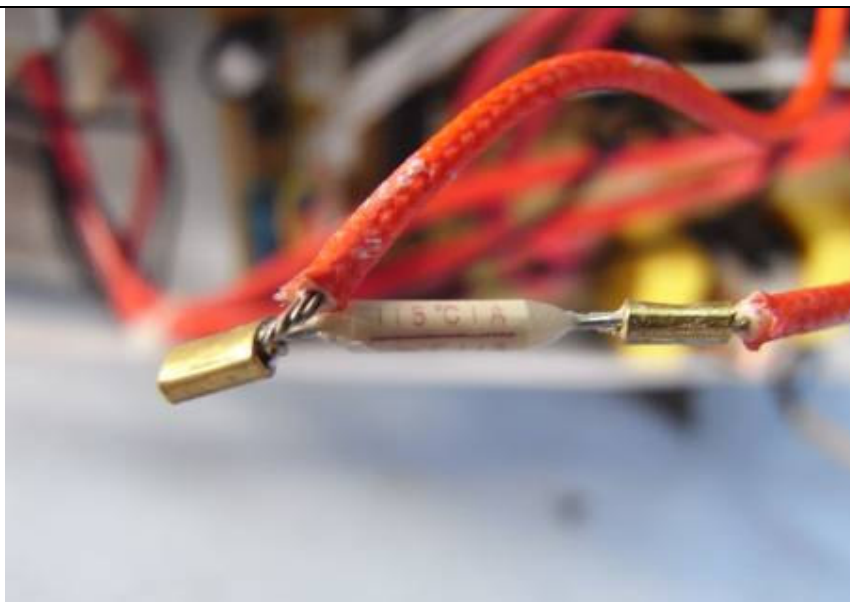
☒ rear

☐ right

☐ left

☐ top

☐ bottom



Details of: Transformer (YYPT-48240900V)

View:

☒ general

☐ front

☐ rear

☐ right

☐ left

☐ top

☐ bottom



This document is issued by the Company subject to its General Conditions of Service printed overleaf, available on request or accessible at www.sgs.com/terms_and_conditions.htm and, for electronic format documents, subject to Terms and Conditions for Electronic Documents at www.sgs.com/terms_e-document.htm. Attention is drawn to the limitation of liability, indemnification and jurisdiction issues defined therein. Any holder of this document is advised that information contained herein reflects the Company's findings at the time of its intervention only and within the limits of Client's instructions, if any. The Company's sole responsibility is to its Client and this document does not exonerate parties to a transaction from exercising all their rights and obligations under the transaction documents. This document cannot be produced except in full, without prior written approval of the Company. Any unauthorized alteration, forgery or falsification of the content or appearance of this document is unlawful and offenders may be prosecuted to the fullest extent of the law.

SGS-CSTC Standards Technical Services Co., Ltd. - E&E Lab Guangzhou
198 Kezhu Road, Sciencetech Park Guangzhou Economic & Technology Development District, Guangzhou, 510663
Guangdong, P.R. China

Tel.: +86 20 8215 5555 Fax: +86 20 8207 5058

Page 18 of 30

Compliance (Summary) Report

Report No.: GZES100700146701

Date: 2010-10-21

Details of: Thermal link for Transformer (YYPT-48240900V)

View:

☒ general

☐ front

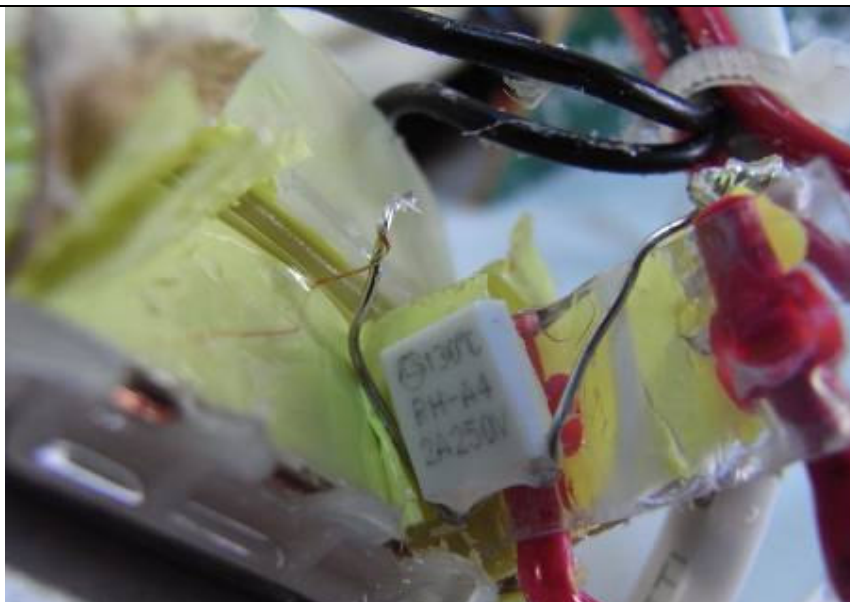
☐ rear

☐ right

☐ left

☐ top

☐ bottom



Details of: Transformer (YYPT-48240900V)

View:

☒ general

☐ front

☐ rear

☐ right

☐ left

☐ top

☐ bottom



This document is issued by the Company subject to its General Conditions of Service printed overleaf, available on request or accessible at www.sgs.com/terms_and_conditions.htm and, for electronic format documents, subject to Terms and Conditions for Electronic Documents at www.sgs.com/terms_e-document.htm. Attention is drawn to the limitation of liability, indemnification and jurisdiction issues defined therein. Any holder of this document is advised that information contained herein reflects the Company's findings at the time of its intervention only and within the limits of Client's instructions, if any. The Company's sole responsibility is to its Client and this document does not exonerate parties to a transaction from exercising all their rights and obligations under the transaction documents. This document cannot be produced except in full, without prior written approval of the Company. Any unauthorized alteration, forgery or falsification of the content or appearance of this document is unlawful and offenders may be prosecuted to the fullest extent of the law.

Compliance (Summary) Report

Report No.: GZES100700146701

Date: 2010-10-21

Details of: Thermal link for Transformer (YYPT-48240900V)

View:

☒ general

☐ front

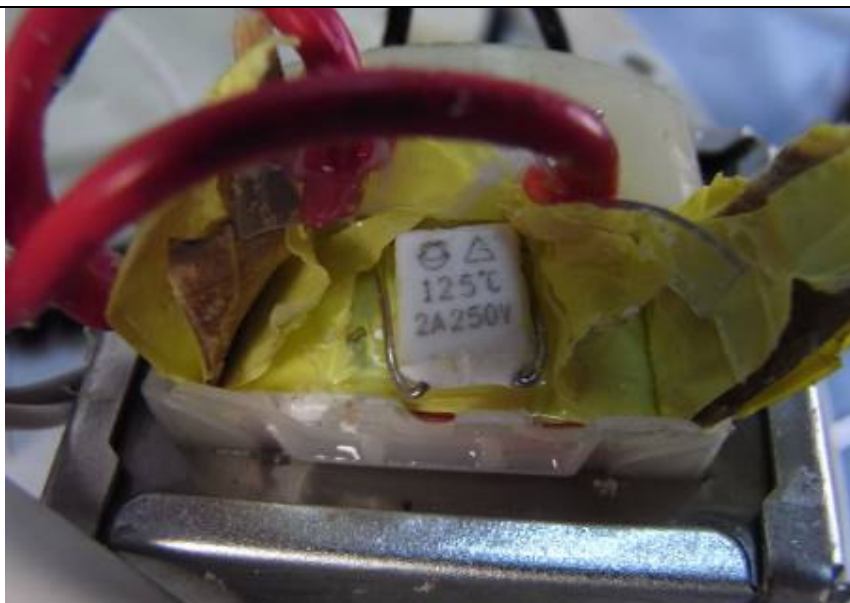
☐ rear

☐ right

☐ left

☐ top

☐ bottom



Details of: Foot massage head

View:

☒ general

☐ front

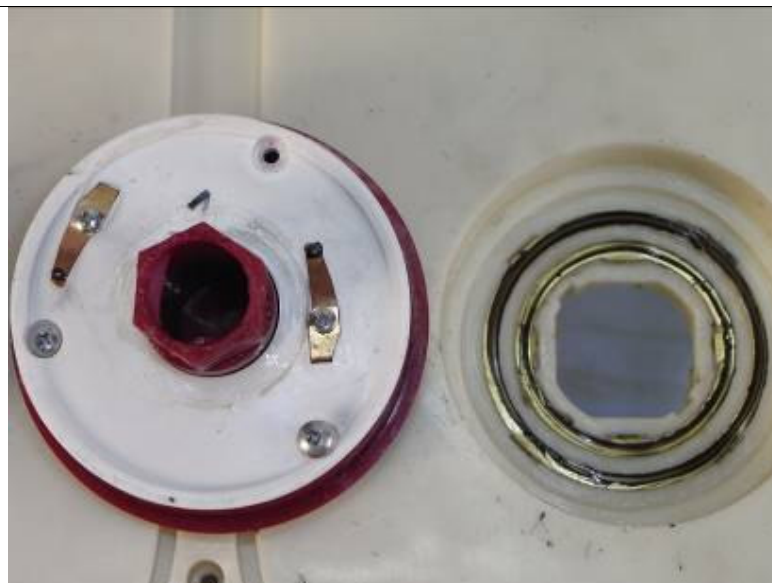
☐ rear

☐ right

☐ left

☐ top

☐ bottom



This document is issued by the Company subject to its General Conditions of Service printed overleaf, available on request or accessible at www.sgs.com/terms_and_conditions.htm and, for electronic format documents, subject to Terms and Conditions for Electronic Documents at www.sgs.com/terms_e-document.htm. Attention is drawn to the limitation of liability, indemnification and jurisdiction issues defined therein. Any holder of this document is advised that information contained herein reflects the Company's findings at the time of its intervention only and within the limits of Client's instructions, if any. The Company's sole responsibility is to its Client and this document does not exonerate parties to a transaction from exercising all their rights and obligations under the transaction documents. This document cannot be produced except in full, without prior written approval of the Company. Any unauthorized alteration, forgery or falsification of the content or appearance of this document is unlawful and offenders may be prosecuted to the fullest extent of the law.

Compliance (Summary) Report

Report No.: GZES100700146701

Date: 2010-10-21

Details of: Foot massage head and PCB for foot massage head

View:

☐ general

☒ front

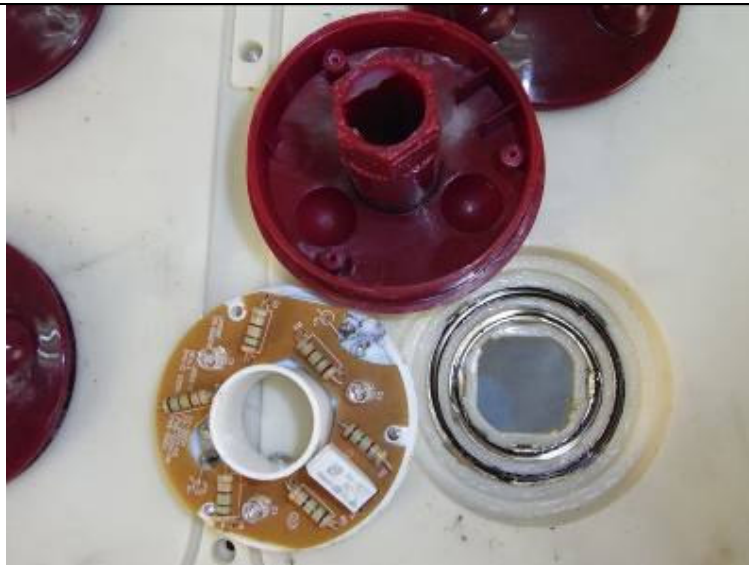
☐ rear

☐ right

☐ left

☐ top

☐ bottom



Details of: PCB for foot massage head

View:

☐ general

☐ front

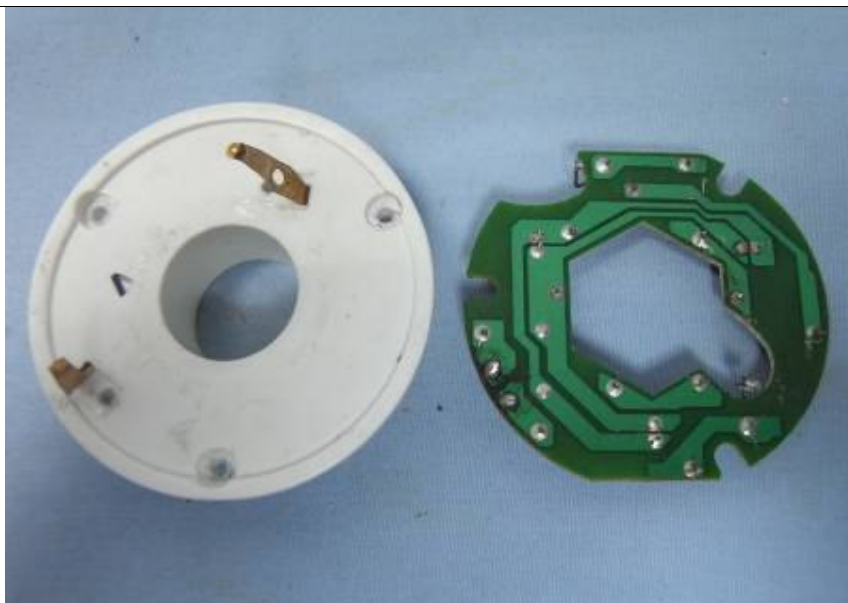
☒ rear

☐ right

☐ left

☐ top

☐ bottom



This document is issued by the Company subject to its General Conditions of Service printed overleaf, available on request or accessible at www.sgs.com/terms_and_conditions.htm and, for electronic format documents, subject to Terms and Conditions for Electronic Documents at www.sgs.com/terms_e-document.htm. Attention is drawn to the limitation of liability, indemnification and jurisdiction issues defined therein. Any holder of this document is advised that information contained herein reflects the Company's findings at the time of its intervention only and within the limits of Client's instructions, if any. The Company's sole responsibility is to its Client and this document does not exonerate parties to a transaction from exercising all their rights and obligations under the transaction documents. This document cannot be produced except in full, without prior written approval of the Company. Any unauthorized alteration, forgery or falsification of the content or appearance of this document is unlawful and offenders may be prosecuted to the fullest extent of the law.

Compliance (Summary) Report

Report No.: GZES100700146701

Date: 2010-10-21

Details of: Infrared receiver

View:

☐ general

☒ front

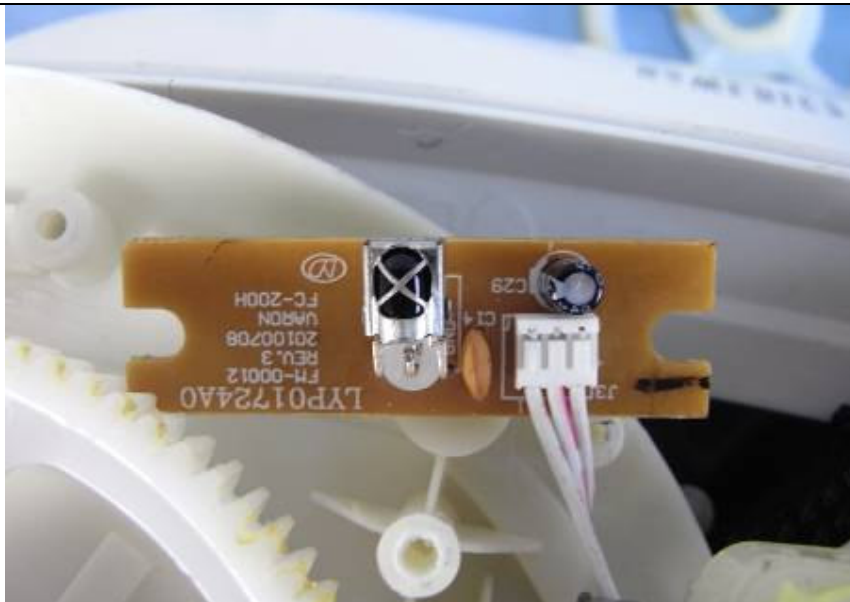
☐ rear

☐ right

☐ left

☐ top

☐ bottom



Details of: Infrared receiver

View:

☐ general

☐ front

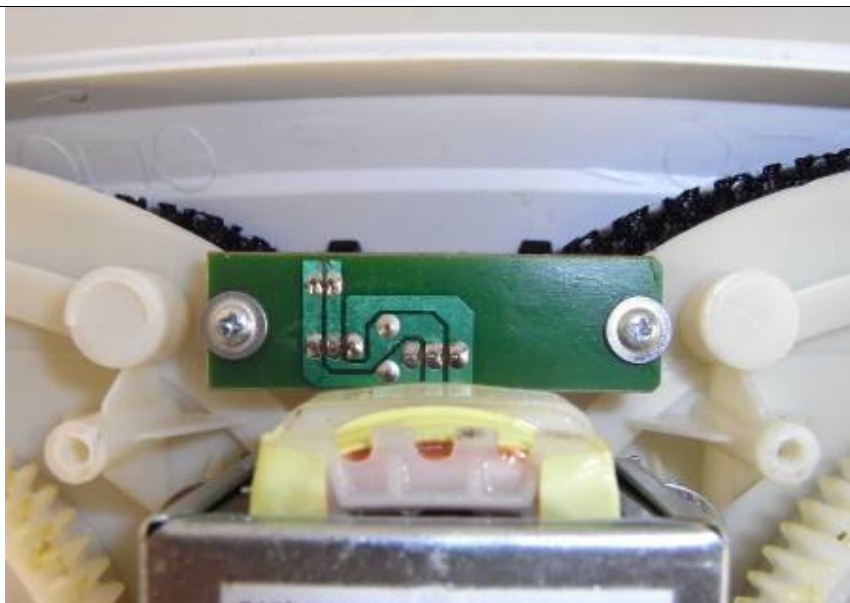
☒ rear

☐ right

☐ left

☐ top

☐ bottom



This document is issued by the Company subject to its General Conditions of Service printed overleaf, available on request or accessible at www.sgs.com/terms_and_conditions.htm and, for electronic format documents, subject to Terms and Conditions for Electronic Documents at www.sgs.com/terms_e-document.htm. Attention is drawn to the limitation of liability, indemnification and jurisdiction issues defined therein. Any holder of this document is advised that information contained herein reflects the Company's findings at the time of its intervention only and within the limits of Client's instructions, if any. The Company's sole responsibility is to its Client and this document does not exonerate parties to a transaction from exercising all their rights and obligations under the transaction documents. This document cannot be produced except in full, without prior written approval of the Company. Any unauthorized alteration, forgery or falsification of the content or appearance of this document is unlawful and offenders may be prosecuted to the fullest extent of the law.

SGS-CSTC Standards Technical Services Co., Ltd. - E&E Lab Guangzhou
198 Kezhu Road, Sciencetech Park Guangzhou Economic & Technology Development District, Guangzhou, 510663
Guangdong, P.R. China
Tel.: +86 20 8215 5555 Fax: +86 20 8207 5058

Compliance (Summary) Report

Report No.: GZES100700146701

Date: 2010-10-21

Details of: PCB for mainboard

View:

☐ general

☒ front

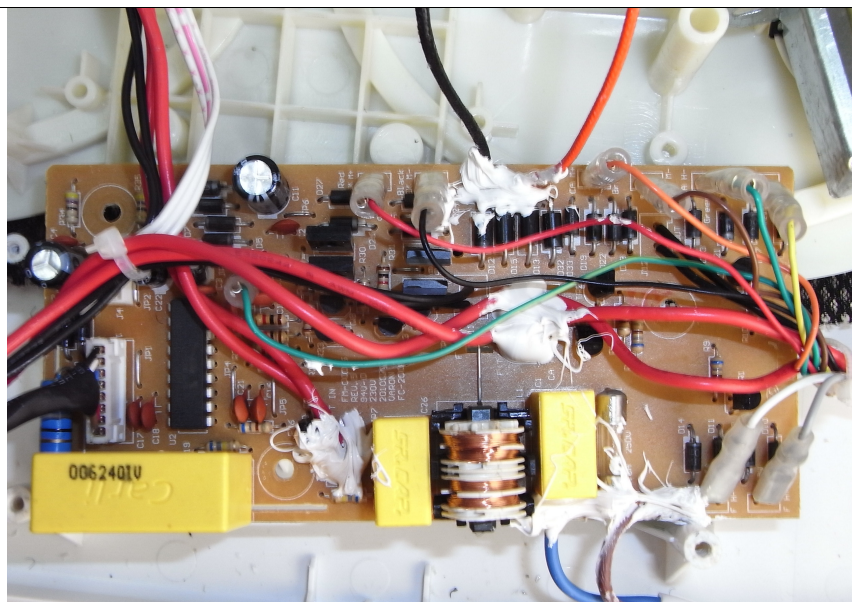
☐ rear

☐ right

☐ left

☐ top

☐ bottom



Details of: PCB for mainboard

View:

☐ general

☒ front

☐ rear

☐ right

☐ left

☐ top

☐ bottom



This document is issued by the Company subject to its General Conditions of Service printed overleaf, available on request or accessible at www.sgs.com/terms_and_conditions.htm and, for electronic format documents, subject to Terms and Conditions for Electronic Documents at www.sgs.com/terms_e-document.htm. Attention is drawn to the limitation of liability, indemnification and jurisdiction issues defined therein. Any holder of this document is advised that information contained hereon reflects the Company's findings at the time of its intervention only and within the limits of Client's instructions, if any. The Company's sole responsibility is to its Client and this document does not exonerate parties to a transaction from exercising all their rights and obligations under the transaction documents. This document cannot be produced except in full, without prior written approval of the Company. Any unauthorized alteration, forgery or falsification of the content or appearance of this document is unlawful and offenders may be prosecuted to the fullest extent of the law.

SGS-CSTC Standards Technical Services Co., Ltd. - E&E Lab Guangzhou
 198 Kezhu Road, Sciencetech Park Guangzhou Economic & Technology Development District, Guangzhou, 510663
 Guangdong, P.R. China
 Tel.: +86 20 8215 5555 Fax: +86 20 8207 5058

Compliance (Summary) Report

Report No.: GZES100700146701

Date: 2010-10-21

Details of: PCB for mainboard

View:

☐ general

☐ front

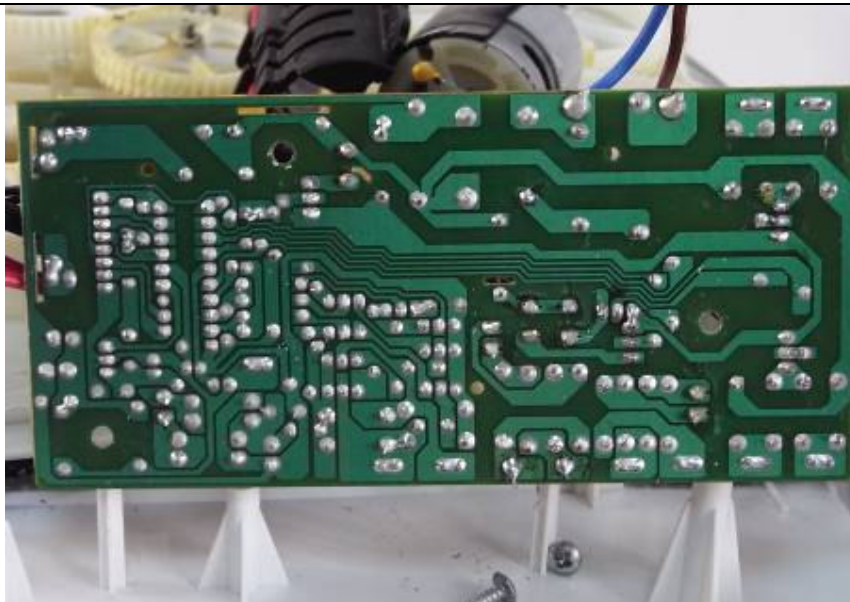
☒ rear

☐ right

☐ left

☐ top

☐ bottom



Details of: Calf unit inside view

View:

☒ general

☐ front

☐ rear

☐ right

☐ left

☐ top

☐ bottom



This document is issued by the Company subject to its General Conditions of Service printed overleaf, available on request or accessible at www.sgs.com/terms_and_conditions.htm and, for electronic format documents, subject to Terms and Conditions for Electronic Documents at www.sgs.com/terms_e-document.htm. Attention is drawn to the limitation of liability, indemnification and jurisdiction issues defined therein. Any holder of this document is advised that information contained hereon reflects the Company's findings at the time of its intervention only and within the limits of Client's instructions, if any. The Company's sole responsibility is to its Client and this document does not exonerate parties to a transaction from exercising all their rights and obligations under the transaction documents. This document cannot be produced except in full, without prior written approval of the Company. Any unauthorized alteration, forgery or falsification of the content or appearance of this document is unlawful and offenders may be prosecuted to the fullest extent of the law.

SGS-CSTC Standards Technical Services Co., Ltd. - E&E Lab Guangzhou
198 Kezhu Road, Sciencetech Park Guangzhou Economic & Technology Development District, Guangzhou, 510663
Guangdong, P.R. China

Tel.: +86 20 8215 5555 Fax: +86 20 8207 5058

Page 24 of 30

Compliance (Summary) Report

Report No.: GZES100700146701

Date: 2010-10-21

Details of: Motor (WNRC-390SM-17220-76VK)

View:

☒ general

☐ front

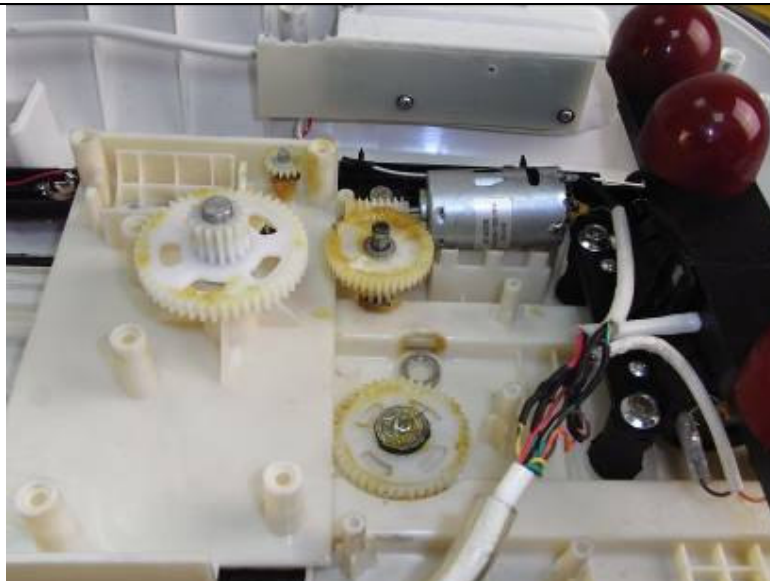
☐ rear

☐ right

☐ left

☐ top

☐ bottom



Details of: Motor (WNRC-560SAP-19305-80VD)

View:

☒ general

☐ front

☐ rear

☐ right

☐ left

☐ top

☐ bottom



This document is issued by the Company subject to its General Conditions of Service printed overleaf, available on request or accessible at www.sgs.com/terms_and_conditions.htm and, for electronic format documents, subject to Terms and Conditions for Electronic Documents at www.sgs.com/terms_e-document.htm. Attention is drawn to the limitation of liability, indemnification and jurisdiction issues defined therein. Any holder of this document is advised that information contained hereon reflects the Company's findings at the time of its intervention only and within the limits of Client's instructions, if any. The Company's sole responsibility is to its Client and this document does not exonerate parties to a transaction from exercising all their rights and obligations under the transaction documents. This document cannot be produced except in full, without prior written approval of the Company. Any unauthorized alteration, forgery or falsification of the content or appearance of this document is unlawful and offenders may be prosecuted to the fullest extent of the law.

SGS-CSTC Standards Technical Services Co., Ltd. - E&E Lab Guangzhou
198 Kezhu Road, Sciencetech Park Guangzhou Economic & Technology Development District, Guangzhou, 510663
Guangdong, P.R. China
Tel.: +86 20 8215 5555 Fax: +86 20 8207 5058

Compliance (Summary) Report

Report No.: GZES100700146701

Date: 2010-10-21

Details of: Message head for calf unit

View:

☒ general

☐ front

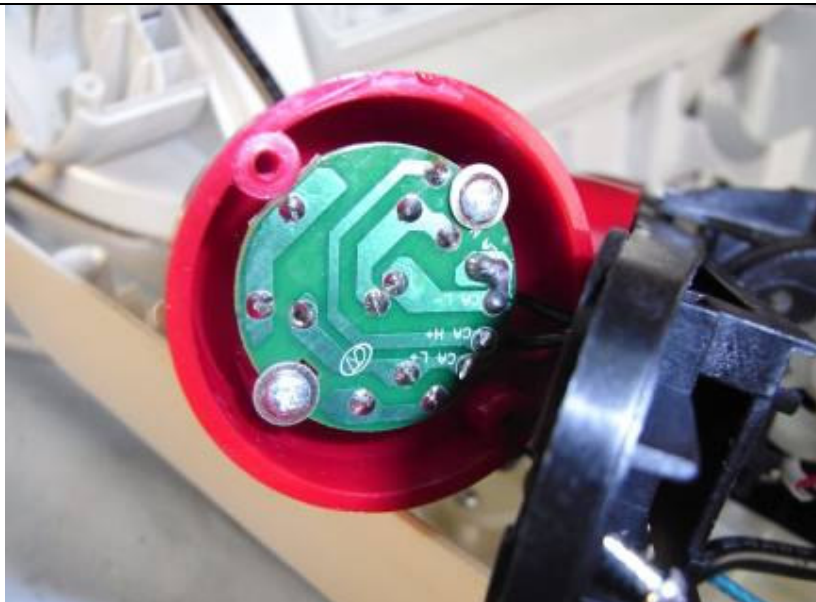
☐ rear

☐ right

☐ left

☐ top

☐ bottom



Details of: Message head for calf unit

View:

☒ general

☐ front

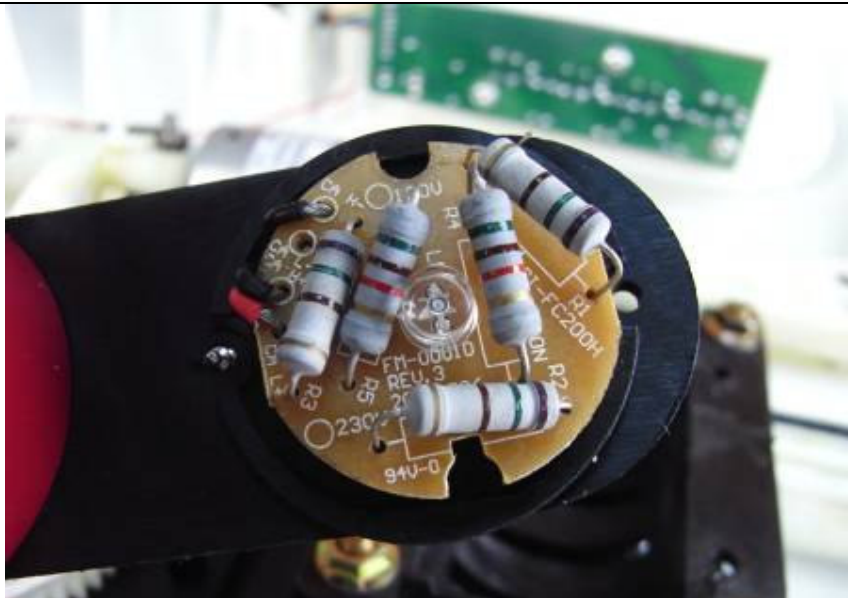
☐ rear

☐ right

☐ left

☐ top

☐ bottom



Details of: Control PCB

This document is issued by the Company subject to its General Conditions of Service printed overleaf, available on request or accessible at www.sgs.com/terms_and_conditions.htm and, for electronic format documents, subject to Terms and Conditions for Electronic Documents at www.sgs.com/terms_e-document.htm. Attention is drawn to the limitation of liability, indemnification and jurisdiction issues defined therein. Any holder of this document is advised that information contained hereon reflects the Company's findings at the time of its intervention only and within the limits of Client's instructions, if any. The Company's sole responsibility is to its Client and this document does not exonerate parties to a transaction from exercising all their rights and obligations under the transaction documents. This document cannot be produced except in full, without prior written approval of the Company. Any unauthorized alteration, forgery or falsification of the content or appearance of this document is unlawful and offenders may be prosecuted to the fullest extent of the law.

SGS-CSTC Standards Technical Services Co., Ltd. - E&E Lab Guangzhou
198 Kezhu Road, Sciencetech Park Guangzhou Economic & Technology Development District, Guangzhou, 510663
Guangdong, P.R. China

Tel.: +86 20 8215 5555 Fax: +86 20 8207 5058

Compliance (Summary) Report

Report No.: GZES100700146701

Date: 2010-10-21

View:

☐ general

☒ front

☐ rear

☐ right

☐ left

☐ top

☐ bottom



Details of: Control PCB

View:

☐ general

☐ front

☒ rear

☐ right

☐ left

☐ top

☐ bottom



Details of: Remote controller

This document is issued by the Company subject to its General Conditions of Service printed overleaf, available on request or accessible at www.sgs.com/terms_and_conditions.htm and, for electronic format documents, subject to Terms and Conditions for Electronic Documents at www.sgs.com/terms_e-document.htm. Attention is drawn to the limitation of liability, indemnification and jurisdiction issues defined therein. Any holder of this document is advised that information contained herein reflects the Company's findings at the time of its intervention only and within the limits of Client's instructions, if any. The Company's sole responsibility is to its Client and this document does not exonerate parties to a transaction from exercising all their rights and obligations under the transaction documents. This document cannot be produced except in full, without prior written approval of the Company. Any unauthorized alteration, forgery or falsification of the content or appearance of this document is unlawful and offenders may be prosecuted to the fullest extent of the law.

SGS-CSTC Standards Technical Services Co., Ltd. - E&E Lab Guangzhou
198 Kezhu Road, Sciencetech Park Guangzhou Economic & Technology Development District, Guangzhou, 510663
Guangdong, P.R. China

Tel.: +86 20 8215 5555 Fax: +86 20 8207 5058

Page 27 of 30

Compliance (Summary) Report

Report No.: GZES100700146701

Date: 2010-10-21

View:

☐ general

☒ front

☐ rear

☐ right

☐ left

☐ top

☐ bottom



Details of: Remote controller

View:

☐ general

☐ front

☒ rear

☐ right

☐ left

☐ top

☐ bottom



Details of: PCB for Remote controller

This document is issued by the Company subject to its General Conditions of Service printed overleaf, available on request or accessible at www.sgs.com/terms_and_conditions.htm and, for electronic format documents, subject to Terms and Conditions for Electronic Documents at www.sgs.com/terms_e-document.htm. Attention is drawn to the limitation of liability, indemnification and jurisdiction issues defined therein. Any holder of this document is advised that information contained herein reflects the Company's findings at the time of its intervention only and within the limits of Client's instructions, if any. The Company's sole responsibility is to its Client and this document does not exonerate parties to a transaction from exercising all their rights and obligations under the transaction documents. This document cannot be produced except in full, without prior written approval of the Company. Any unauthorized alteration, forgery or falsification of the content or appearance of this document is unlawful and offenders may be prosecuted to the fullest extent of the law.

SGS-CSTC Standards Technical Services Co., Ltd. - E&E Lab Guangzhou
198 Kezhu Road, Sciencetech Park Guangzhou Economic & Technology Development District, Guangzhou, 510663
Guangdong, P.R. China

Tel.: +86 20 8215 5555 Fax: +86 20 8207 5058

Compliance (Summary) Report

Report No.: GZES100700146701

Date: 2010-10-21

View:

☐ general

☒ front

☐ rear

☐ right

☐ left

☐ top

☐ bottom



Details of: PCB for Remote controller

View:

☐ general

☐ front

☒ rear

☐ right

☐ left

☐ top

☐ bottom



This document is issued by the Company subject to its General Conditions of Service printed overleaf, available on request or accessible at www.sgs.com/terms_and_conditions.htm and, for electronic format documents, subject to Terms and Conditions for Electronic Documents at www.sgs.com/terms_e-document.htm. Attention is drawn to the limitation of liability, indemnification and jurisdiction issues defined therein. Any holder of this document is advised that information contained herein reflects the Company's findings at the time of its intervention only and within the limits of Client's instructions, if any. The Company's sole responsibility is to its Client and this document does not exonerate parties to a transaction from exercising all their rights and obligations under the transaction documents. This document cannot be produced except in full, without prior written approval of the Company. Any unauthorized alteration, forgery or falsification of the content or appearance of this document is unlawful and offenders may be prosecuted to the fullest extent of the law.

SGS-CSTC Standards Technical Services Co., Ltd. - E&E Lab Guangzhou
198 Kezhu Road, Sciencetech Park Guangzhou Economic & Technology Development District, Guangzhou, 510663
Guangdong, P.R. China

Tel.: +86 20 8215 5555 Fax: +86 20 8207 5058

Page 29 of 30

